



THE UNIVERSITY of  
NEW ORLEANS

## Mailer 3 - Final Student Symposium Information



### 2024 ASCE Gulf Coast Student Symposium University of New Orleans March 7-9, 2024

February 21, 2024

Dear ASCE Student Chapter of the Gulf Coast Student Conference:

This is your **2024 ASCE Gulf Coast Student Symposium Mailer III**, the *last* of three packets to be sent to each of the participating ASCE Student Chapters in our Student Conference. In addition, you can find information on the schedule, competitions, registration, and location addresses on our [Gulf Coast – Hosted by the University of New Orleans \(asce.org\)](https://www.asce.org/gulf-coast-hosted-by-the-university-of-new-orleans).

Please carefully read through this packet and forward copies to the appropriate members in your student chapter (*team captains, individual team members, etc.*). Do not delete this mailer as the information given within may not be in earlier mailers. Enclosed you will find the following information:

- [Receipt confirmation & registration reminders](#),
- [Safety-first culture information](#),
- [Maps, directions, and parking information](#),
- [Non-competition event information](#),
- [Presentation technology and social network information](#),
- [Final deadlines](#),
- [Final student symposium schedule](#),
- [Final presentation schedules](#),
- [ASCE Pop-up Leadership Workshops information](#),
- [ASCE competition eligibility requirements](#),
- [Business Meeting information](#),
- [Student Symposium Paper Competition information](#),
- [Sponsor recognition](#)

Receipt of this mailer should be confirmed by Friday, February 23, 2024. **Please note the individual LATE individual registration deadline is Friday, February 23, 2024.**

If you have any questions, feel free to contact us at the e-mail address: [GCSS@uno.edu](mailto:GCSS@uno.edu).

We look forward to welcoming your student chapter to the 2024 ASCE [Gulf Coast Student Symposium!](#)

Sincerely,

*Gianna Cothren*  
Faculty Advisor  
UNO ASCE Student Chapter



THE UNIVERSITY of  
NEW ORLEANS

## Mailer 3 - Final Student Symposium Information



### **STEP 1 - Mailer 3 Receipt Confirmation- *required***

---

Receipt Confirmation Form: <https://forms.gle/ScTC4TiGx1BaBmK2A>



---

## **REGISTRATION REMINDERS**

### **STEP 2 - Individual Registration Form – *required of all attendees!***

Individual Registration Form was due on **February 2, 2024**. If you have not submitted this form, please do so ASAP.

Please visit our symposium website at [Gulf Coast – Hosted by the University of New Orleans \(asce.org\)](https://www.asce.org/gulf-coast-hosted-by-the-university-of-new-orleans) and complete the Individual Registration Form

*The Individual Registration Form must be filled out by ALL individuals attending the symposium including chapter members, team competitors, chapter spectators, guest teams, faculty advisors, volunteers, judges, and ASCE Region Leadership. The Individual Registration Form contains liability waiver information that must be reviewed and acknowledged by every individual attending, participating, and/or spectating at the symposium.*

### **STEP 3 - Individual Registration Payment - *required***

Individual Registration is **\$50** per person. Registration form and payment were due by **February 2**. **If you or your chapter have not submitted the registration payment, please do so ASAP.**

Individual Participant Registration via Credit Card on Eventbrite [Online Payment Portal](#) will add a \$5 credit card fee per participant registration. You may pay individually or for all participants at one time. All transactions NON-REFUNDABLE

The alternative (to avoid the \$5 fee per participant) is to write a physical check to cover all student participants (please include a list of student name)

**Make check payable to:**

University of New Orleans Foundation

Attn: “**Your University name** – ASCE Symposium Individual Registration”

**Mail it to:**

University of New Orleans

Civil Engineering Department

Attn: ASCE Faculty Advisor, Gianna Cothren

2000 Lakeshore Drive

New Orleans, LA 70148



THE UNIVERSITY of  
NEW ORLEANS

## Mailer 3 - Final Student Symposium Information



### Safety-First Culture Information

---

This year ASCE and UNO are encouraging a Safety-First Culture during the symposium. We encourage all symposium participants to embrace this concept by thinking about safety in their activities coming to, returning from, and while at our symposium. We want **every** symposium participant to return home safe and healthy.

To generate a Safety-First Culture, we have designated UNO's Director of Environmental Health and Safety as our symposium safety officer.

If an injury does occur during the symposium, it should be reported to the competition head judge, symposium safety officer, or activity leader immediately so that appropriate action can be taken based on the injury. If it is a true emergency, please call 911 first.

Contact information for the symposium safety officer and key host school representatives is listed below. Please keep this list close during the symposium.

#### Symposium Safety Officer

David Richardson

Byron Landry

UNO Campus Police – 504-280-666

#### Host School Faculty Advisor

Gianna Cothren

**As a best practice, we strongly recommend that faculty advisors keep and maintain on-hand a list of emergency contact information for their university and participating students. ASCE and the student symposium host do not collect emergency contact information from registrants.**

In the spirit of a Safety Moment, here are some safe driving habits to keep in mind as you travel to the student symposium:

- Driving at the speed limit has proven to save lives.
- Do not drive when tired. Swap drivers often.
- Minimum of two people awake at all times when wheels are rolling.
- Be aware of how larger/heavier vehicles behave when stopping or turning.
- Be aware of your surroundings when backing any vehicle, especially trailers. Better yet, avoid backing up at all, if possible.
- Use a spotter to watch when you must back up a vehicle.
- Slow down when the conditions warrant (rain, snow, darkness, pedestrians nearby).
- Perform a circle of safety around your vehicle to identify what is in your blind spots.

We hope **everyone** has a fun, healthy, and safe time at the 2024 ASCE Gulf Coast Student Symposium.



THE UNIVERSITY of  
NEW ORLEANS

# Mailer 3 - Final Student Symposium Information



## Maps, Directions and Parking

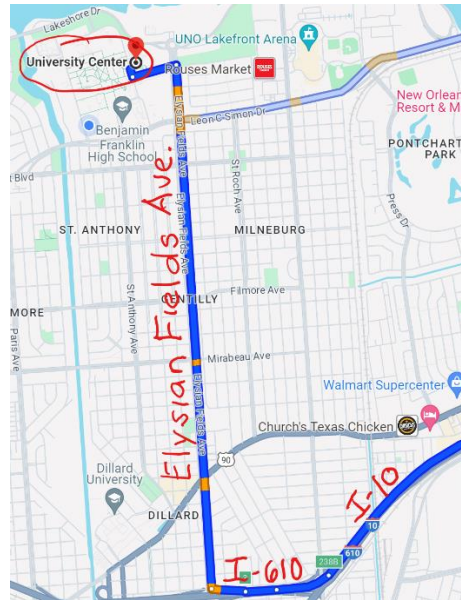
Public ArcGIS Webmap for the  
2024 ASCE Gulf Coast Student Symposium Map  
<https://arcg.is/1Gy5ez0> (under construction)

University of New Orleans  
University Center  
2000 Lakeshore Drive  
New Orleans, LA 70148

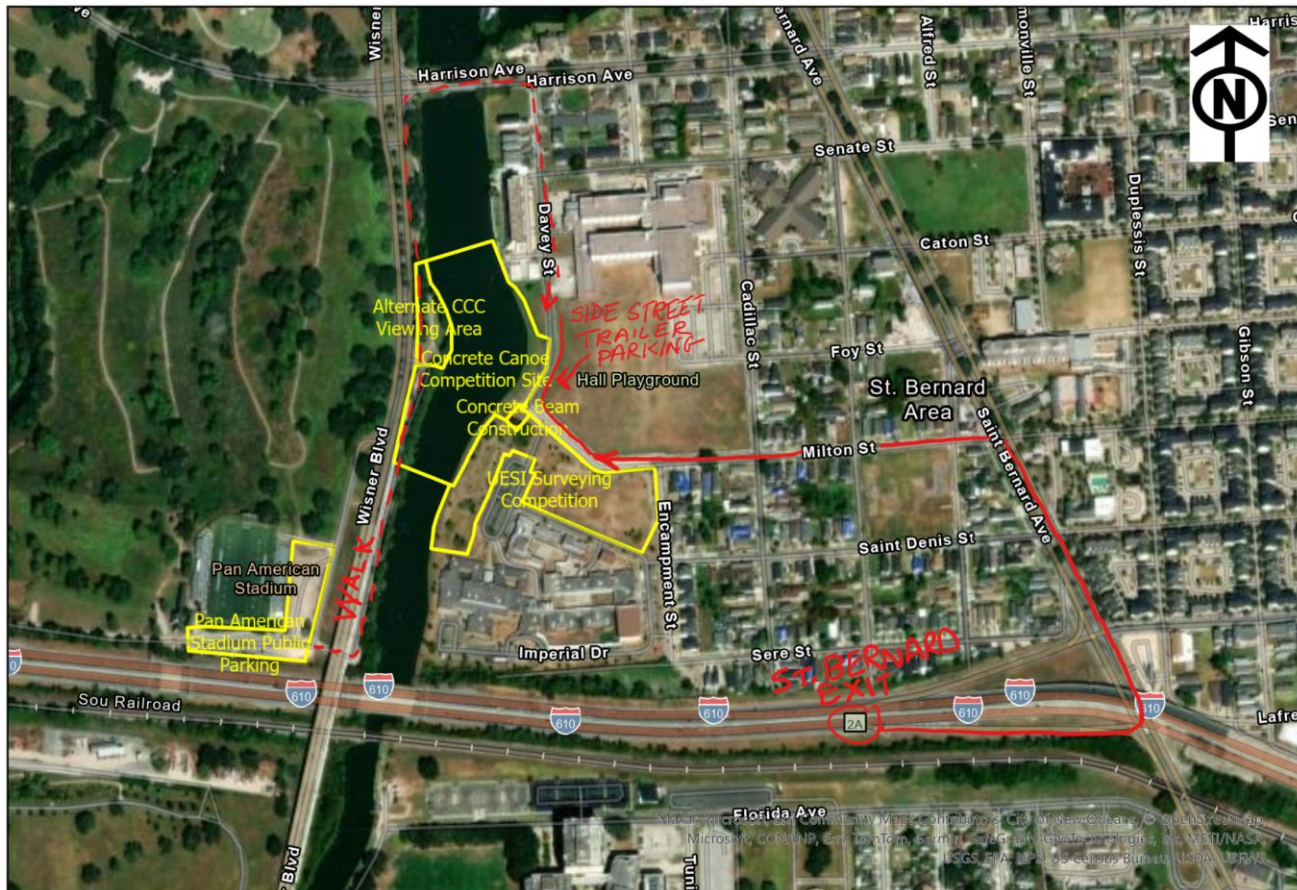
Map on right shows directions from I-10 to I-610 to UNO UC  
via Elysian Fields Avenue

**Check-in at UC for Instructions & Trailer Parking**

**Address to Bayou St. John competition site:**  
New Orleans Youth Study Center  
1100 Milton St, New Orleans, LA 70122  
**Public Parking & Alternate viewing site:**  
194 Zachary Taylor Dr, New Orleans, LA 70130



## Friday March 8th Bayou St. John Concrete Canoe / Beam and Surveying Site



0 0.13 0.25 0.5 Miles



THE UNIVERSITY of  
NEW ORLEANS

## Mailer 3 - Final Student Symposium Information



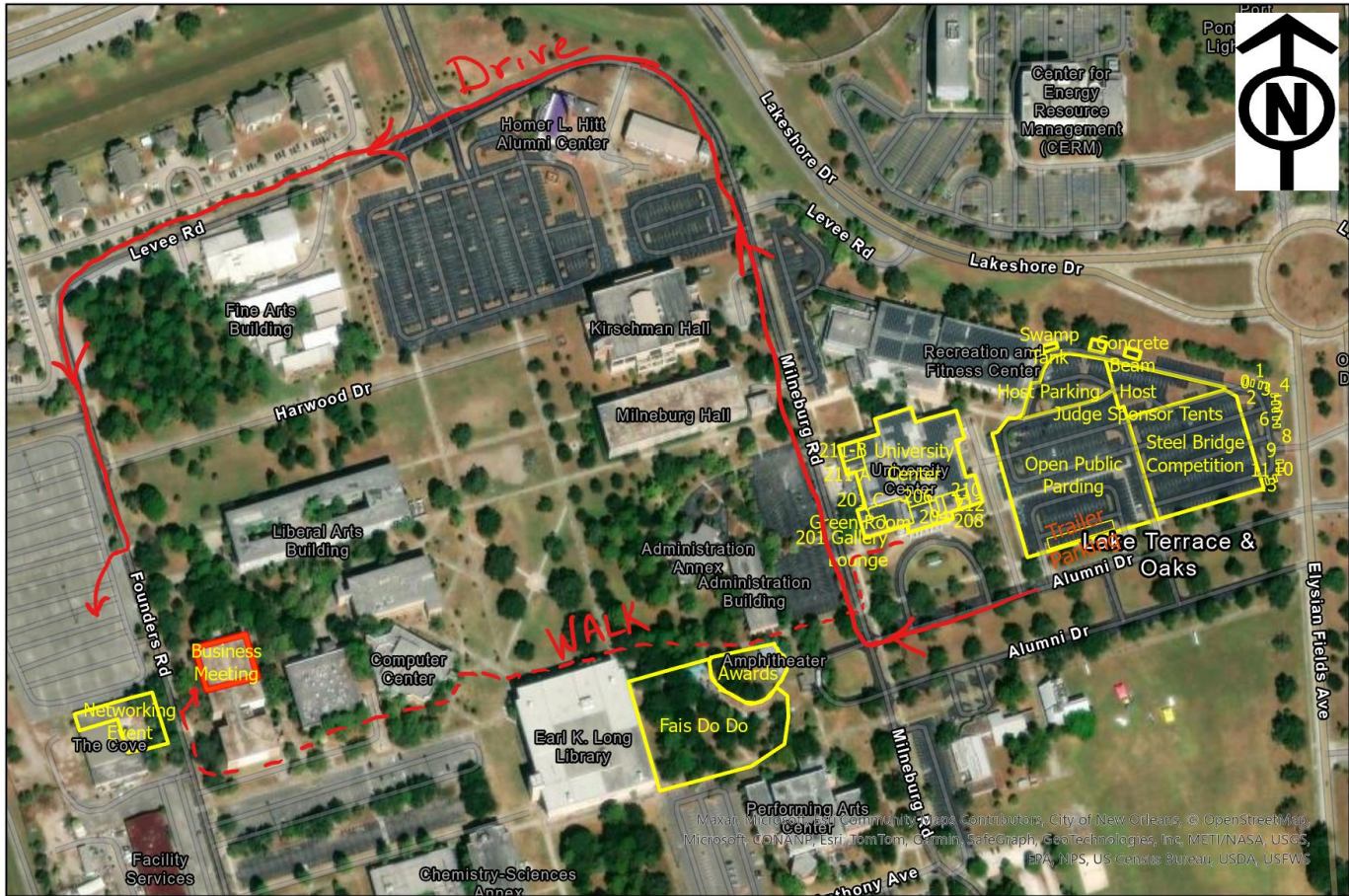
**Directions:** walk from UC

**Address:**

UNO Sandbar & UNO Bicentennial Education Center  
6660 Founders Rd, New Orleans, LA 70122

**Map of UNO Sandbar at the Cove**

Friday March 8th 6PM Business Meeting - 7PM Networking Social







THE UNIVERSITY of  
NEW ORLEANS

# Mailer 3 - Final Student Symposium Information



## Campus Map

[Campus Map | The University of New Orleans \(uno.edu\)](http://The University of New Orleans (uno.edu))





THE UNIVERSITY of  
NEW ORLEANS

## Mailer 3 - Final Student Symposium Information



### Non-Competition Event Information

---

**Registration:** Thursday, March 7 from 1 pm – 4 pm. UNO University Center Gallery Lounge (201)

**Licensure Boards table:** Thursday, March 7 at 4 pm – 7 pm UC Gallery Lounge. Stop by and visit with representatives from Louisiana, Mississippi, and Alabama.

**Presentation:** "Guidelines for effective, shorter, and more productive meetings." By Lisa Roache, Chief Executive Officer of Gainey's: Thursday, March 7 at 4-4:45 pm UC meeting room 208, Open to all. The 2 delegates from each school are highly encouraged to attend this presentation which will help prepare you for the Business Meeting.

**ASCE information table:** Thursday, March 7 at 1 pm - 4 pm UC Gallery Lounge and Friday, March 8 at Bayou St. John 8 am – 3 pm. Stop by the table to learn more about ASCE.

**Networking Social Event:** Friday, March 8 at 7-9 pm. UNO Sandbar in the Cove on Founders Road. Casual

**Awards Ceremony:** March 9, 2024 6-7 pm. UNO Amphitheater (grassy hill area, may bring a towel or blanket) Super Casual/Comfortable.

**Fais Do Do Festival:** March 9, 2024 from 7-9 pm. Merrick Deck behind the Amphitheater. Bring your university **pop-up tent, folding chair**. Each team is encouraged to **bring a festival game** to setup in front of your tent (ex. Cornhole, ring toss, ladder toss, horseshoes, etc. Super Casual/Comfortable.

See below for information about the Pop-Up Leadership Workshops and Business Meeting.

### Presentation Technology and Social Network Information

---

**Sustainable Solutions:** For teams competing in the Sustainable Solutions Competition, bring your easel with you if you have your own. UNO will provide a limited number of easels for the poster presentations. Preferred dimensions would be 63-66" tall, tripod-type easel. If your team needs to purchase one, Amazon has inexpensive, [portable easels](#) (click [link](#) for example). Teams will be responsible for the shipping/transport of easels and projects to and from the symposium.

#### **Other tech information that may be important to your symposium.**

Mobile App info and instructions: <https://arcg.is/1Gy5ez0> (under construction)

**GroupMe info:** [https://groupme.com/join\\_group/99430235/Fmb2fEJA](https://groupme.com/join_group/99430235/Fmb2fEJA)  
Will go live 2 days before the Symposium!







## Final Deadlines

---

<b>February 15<sup>th</sup></b> <b>February 16<sup>th</sup></b>	Student Symposium Paper Competition Submission due Concrete Canoe Project Proposal, Mix Design Sheets, and Materials Notebook due <i>(Upload to respective folder link provided by ASCE)</i>
<b>February 19<sup>th</sup></b>	Sustainable Solutions Competition Technical Design Proposal, Envision Checklist and Criteria Justification, Public Outreach Poster, Sketchup files due <i>(Unique and secure link to be provided to each team from ASCE)</i>
<b>February 21<sup>st</sup></b>	Mailer III (final) sent to each student chapter
<b>February 26<sup>th</sup></b>	Surveying Competition Task 1A Projects due by 5:00pm EST <i>(Unique and secure link to be provided to each team from ASCE)</i>
<b>March 1<sup>st</sup></b>	Mailer III Receipt Confirmation due from each student chapter
<u>March 1<sup>st</sup></u>	Final Date for Late Registrations
<u>March 7<sup>th</sup> - 9<sup>th</sup></u>	2024 ASCE Gulf Coast Student Symposium

---

If your school is no longer participating in a competition, please contact  
[GCSS@uno.edu](mailto:GCSS@uno.edu) ASAP.



## Final Student Symposium Schedule

### 2024 ASCE Gulf Coast Region Student Symposium Tentative Schedule

		Thursday March 7	Friday March 8	Saturday March 9
	Location	<b>UNO University Center</b>	<b>Bayou St. John</b>	<b>UNO University Center</b>
<b>Morning</b>	Activities		Concrete Canoe Races & Display 8AM-4PM	Steel Bridge Competition 8AM-3PM (Parking Lot)
			Surveying Competition 8AM-4PM	CCC Presentations 8AM-12PM (211B)
			Concrete Beam Competition 8AM-3PM	Paper Presentation 8AM-12PM (208)
			ASCE Table	Concrete Beam 8AM-12PM (Parking Lot)
				H&H Mystery Event 10-12PM (Gallery Lounge Session 1)
	Location	<b>UNO University Center</b>	<b>Bayou St. John</b>	
<b>Afternoon</b>	Activities	Registration 1-4 PM Gallery Lounge	12-1 PM Lunch	12-1 PM Lunch
		Concrete Canoe Swamp Test 3-5 PM Parking Lot		H&H Mystery Event 1-3PM (Gallery Lounge Session 2)
		Steel Bridge Visual Display 3-5 PM Parking Lot	Concrete Canoe Races & Display (cont.)	Steel Bridge Competition (cont.)
		Sustainable Solutions Poster Preview 3-6 PM & Topographic Map Display Atrium	Surveying Competition (cont.)	Sustainable Solutions Presentations 1-4 PM (211B)
		Surveying Captains Meeting 4:30-5 PM (206)	Concrete Beam Competition (cont.)	Geo-Wall 1PM-4PM (Parking Lot)
		ASCE & Licensure Table (Gallery Lounge) Productive Meetings Pres. 4-4:45 PM (208) Pop-Up Workshops 4-7 PM (211A)		Spirit Competitions (Parking Lot)
		Location	<b>UNO University Center</b>	<b>UNO Sandbar</b>
<b>Evening</b>	Activities	Faculty Advisors Meeting 5-6 PM (201C Green Room)	Business Meeting 5:30-6:30 PM (Educ.Center) followed by	Awards Presentation 6-7 PM followed by
		Topo Map Pres./Meeting 5-7 PM (206) GeoWall Meeting 5-7PM (212)		
		Captains Meetings for Concrete Canoe (208) & Steel Bridge (210) 6-7 PM	Networking Event 7-9 PM	



## Final Event & Presentation Schedule

<b>THURSDAY, MARCH 7</b>													
<b>8AM - 3PM (7hr block w/lunch break)</b>													
Topo Map Presentation	LSU	AU	UA	UAB	McNEESE	OLE MISS	AAMU	UNO	UL	MSU	LA TECH	UAH	USA
<b>FRIDAY, MARCH 8</b>													
<b>8AM-4PM (8hr Block includes Lunch break) Competition Order Random Draw on Site</b>													
Concrete Canoe Display followed by Races followed by Final Product													
Surveying teams split into Tasks 2-5													
Concrete Beam													
<b>SATURDAY, MARCH 9</b>													
<b>8AM - 12 PM (15 Minute Time Slots)</b>													
Canoe Presentation	McNEESE	OLE MISS	AU	UAH	UA	UL	LSU	UNO	MSU	LA TECH	USA		
<b>8AM - 12PM (10 Minute Time Slots)</b>													
Paper Presentation	UNO	AU	LSU	LA TECH	MSU	AAMU	UL	McNEESE	OLE MISS	UA	UAH	UAB	USA
<b>8AM - 12PM (4hr block)</b>													
Concrete Beam	UAB	McNEESE	MSU	AAMU	UL	OLE MISS	USA	LSU	AU	UA	UAH		
<b>10AM - 12PM (Session 1: 2hr block)</b>													
H&H Design	UNO	MSU	UA	OLE MISS	UL	LA TECH							
<b>10AM - 12PM (Session 2: 2hr block)</b>													
H&H Design	McNEESE	USA	LSU	UAB	AAMU	AU							
<b>1PM - 4PM (18 Minute Intervals)</b>													
Sustainable Solutions	UAH	USA	LSU	UL	UAB	AU	AAMU	UA					
<b>1PM - 4PM (4hr block)</b>													
Geo Wall	AAMU	UL	OLE MISS	LSU	USA	MSU	UAH	UNO	AU	UA	LA TECH		

## ASCE Pop-Up Leadership Workshops

- Don't miss the ASCE Pop-Up Leadership Shops hosted by the ASCE Committee on Student Members. Learn about professional skills you can use now and after graduation to help you grow in your career. Workshop #1 – "Ethics & Professional Conduct" / Thursday, March 7<sup>th</sup>, 4–5PM
- Workshop #2 – "Pathway to the PE" / Thursday, March 7<sup>th</sup>, 5-6PM
- Workshop #3 – "What Is My Emotional Intelligence?" / Thursday, March 7<sup>th</sup>, 6-7PM

ASCE Pop-Up  
Leadership Shop

Coming to Your Regional Symposium

SPRING 2024



THE UNIVERSITY of  
NEW ORLEANS

## Mailer 3 - Final Student Symposium Information



# ASCE Competition Eligibility Requirements

---

*Competitions that advance to an ASCE Society-wide Competitions Finals include: ASCE Concrete Canoe Competition, ASCE Sustainable Solutions Competition, and ASCE UESI Surveying Competition. The AISC/ASCE Student Steel Bridge Competition advances to the SSBC National Finals and follows the eligibility requirements below. See [SSBC Rules](#) for more information.*

*Invitations to Student Symposia and ASCE Student Civil Engineering Championships/Society-wide Competition Finals are a privilege, not a right. Failure to act professionally can result in letters of reprimand, mandatory behavior management plans, and loss of invitations to further competition for individual institutions and/or entire conferences. Please note that the requirements for eligibility for Society-wide competition finals are more stringent than the requirements for participation at the student symposia competitions.*

## Eligibility for Student Symposium Competition

The following qualifications are required of all ASCE Student Chapters to compete at the Student Symposia Competitions:

**An ASCE Student Chapter must:**

1. Be in good standing with ASCE:
  - a. Have paid their annual dues, as received by ASCE, **no later than the start of their Student Symposium.**
  - b. Have submitted their student chapter's full Annual Report or EZ Annual Reporting Form **no later than February 1, 11:59 p.m. EST.**

## Eligibility for ASCE Society-wide Competition Finals

The following qualifications are required of all ASCE Student Chapters in order to advance to the ASCE Society-wide Competition Finals:

**An ASCE Student Chapter must:**

1. Be in good standing with ASCE:
  - a. Have paid their annual dues, as received by ASCE, **no later than February 1, 11:59 p.m. EST.**
  - b. Have submitted their student chapter's **full Annual Report, no later than February 1, 11:59 p.m. EST and have received a minimum score of 25 points out of a possible 100.** **Student Chapters that submit an EZ annual reporting form do not qualify** to advance to competition finals; and
2. Attend and participate in their assigned Student Symposium as shown through their school's:
  - a. On-time attendance and active participation by a member of the ASCE Student Chapter at the Student Symposium Business Meeting.
  - b. Participation in the Student Symposium Paper Competition, including submission and presentation by a member of the ASCE Student Chapter. Note that any papers/presentations created for any other competition do not count as an entry into the Student Symposium Paper Competition.

Questions regarding eligibility should be directed to [student@asce.org](mailto:student@asce.org).



THE UNIVERSITY of  
NEW ORLEANS

## Mailer 3 - Final Student Symposium Information



### **Business Meeting** ([Eligibility Requirement](#))

---

The Business Meeting is scheduled to take place on Friday, March 8, 2024 at 6-7PM.

The draft business meeting agenda will be emailed to all chapters shortly after Mailer 3. If you have additional agenda items and/or motions that your student chapter would like to be included in the agenda, please submit them to [GCSS@uno.edu](mailto:GCSS@uno.edu) by **Thursday, February 29th**.

Note that the business meeting is officially the business meeting for the Student Conference Board of Delegates. The Board of Delegates consists of two student delegates (preferably a senior or junior in an ASCE leadership position and a sophomore in or aspiring to an ASCE leadership position) and the faculty advisor from each student chapter. Each student delegate must be a member in good standing with their student chapter and the Society. Each student chapter in the Student Conference has one vote. At least one member of your ASCE student chapter must participate. ([See eligibility requirements.](#)) See attachment for draft agenda.

### **Student Symposium Paper Competition** ([Eligibility Requirement](#))

---

This is a mandatory paper submission and presentation for any student chapter participating in the 2024 ASCE Gulf Coast Student Symposium that wishes to be eligible to advance to ASCE Society-wide competition finals and SSBC National Finals. Competitions **requiring** this include the ASCE Concrete Canoe Competition, ASCE Sustainable Solutions Competition, ASCE UESI Surveying Competition, and AISC/ASCE Student Steel Bridge Competition.

The ASCE Student Symposium Paper Competition emphasizes the importance of being able to write and present a paper as essential communication skills for all engineers and often necessary for advancement in your career.

Participation in the Student Symposium Paper Competition, including submission and presentation by a member of the ASCE Student Chapter, is a requirement to be eligible to advance to an ASCE Society-wide competition finals and SSBC National Finals.

Note that any papers/presentations created for any other competition do not count as an entry into the Student Symposium Paper Competition.

The topic for the ASCE Gulf South Student Symposium Paper Competition is posted on the website:

[Competitions – Gulf Coast \(asce.org\)](#)

Submission deadline is: February 15, 2024

Submission email/link is: [GCSS@uno.edu](mailto:GCSS@uno.edu)

This topic is the same topic as the [Daniel W. Mead Prize for Students](#). However, the Student Symposium Paper Competition and the Daniel W. Mead Prize for Students are two separate competitions and must be submitted separately. The Student Symposium Paper Competition paper is due February 15th and submitted to [GCSS@uno.edu](mailto:GCSS@uno.edu). Late submissions will be accepted but are subject to deductions.

The Daniel W. Mead Prize for Students is due March 1<sup>st</sup> and submitted to [student@asce.org](mailto:student@asce.org).

---



THE UNIVERSITY of  
NEW ORLEANS

## Mailer 3 - Final Student Symposium Information



### General Information & Reminders

---

No events will take place at any of the hotels. Overnight trailer parking is provided at the UNO University Center Parking Lot. Pick up a trailer parking pass at registration. Parking close to Bayou St. John on Friday is limited to street side parking. The map indicates additional public parking that is located ½ mile from the event site. We encourage you to come in a group vehicle if possible and drop off if possible. We will designate side street parking for 1 towing truck/van with a trailer or a moving truck/van per school.

Bring 1-2 pop-up tents for your team to put up at Bayou St. John all day Friday, in the University Center parking lot all day Saturday, and at the Fais Do Do on Saturday night. Bring folding bag chairs for all your team and guest. Towels and blankets for relaxing are nice to have as well.

All teams are encouraged to bring their own homemade or manufactured festival like games to setup in front of their team tent as well as any items to present your school spirit.

Surveying teams are reminded to read over the rules to check that they are bringing the equipment needed for their competition. Surveying teams should also bring a printed copy of their topo map to display for public viewing and for judging during the presentation.

Concrete Canoe teams should bring non-slip water shoes for launching and getting in and out of the canoe. The Bayou side is concrete lined, but can be slippery. You may also want to bring some sort of pad, blow up raft, or floatation noodles to help park your canoe and protect it from the concrete lined bayou side.

Bring hats, sunglasses and sunscreen on Friday and Saturday. Lunch will be provided on Friday and Saturday, but you may want to bring extra drinks and snacks to keep in your tent area.

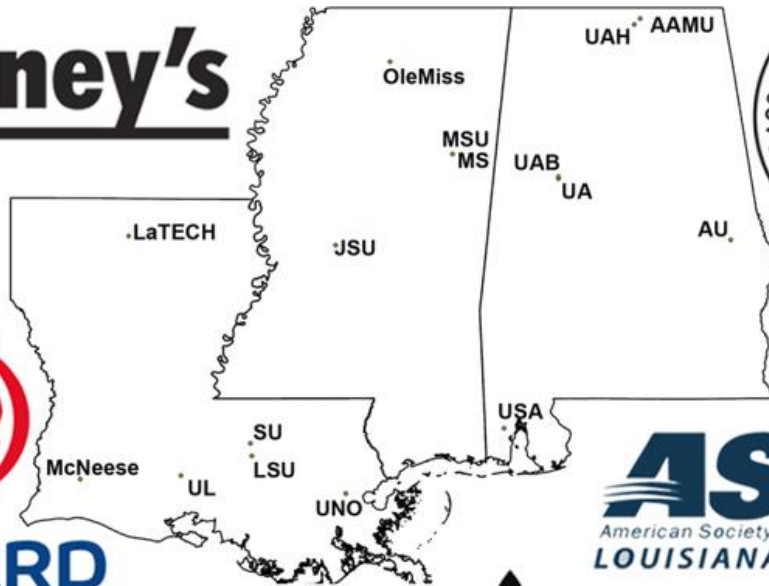


THE UNIVERSITY of  
NEW ORLEANS

# Mailer 3 - Final Student Symposium Information



## Thank you to our Sponsors!



◆Haag & Trammell◆

UNO Campus Booking  
Dr. Robert A. Savoie College of Engineering