

2026  
INDIANA-KENTUCKY  
UNIVERSITY OF KENTUCKY  
**ASCE**  
UNIVERSITY OF LOUISVILLE  
STUDENT SYMPOSIUM

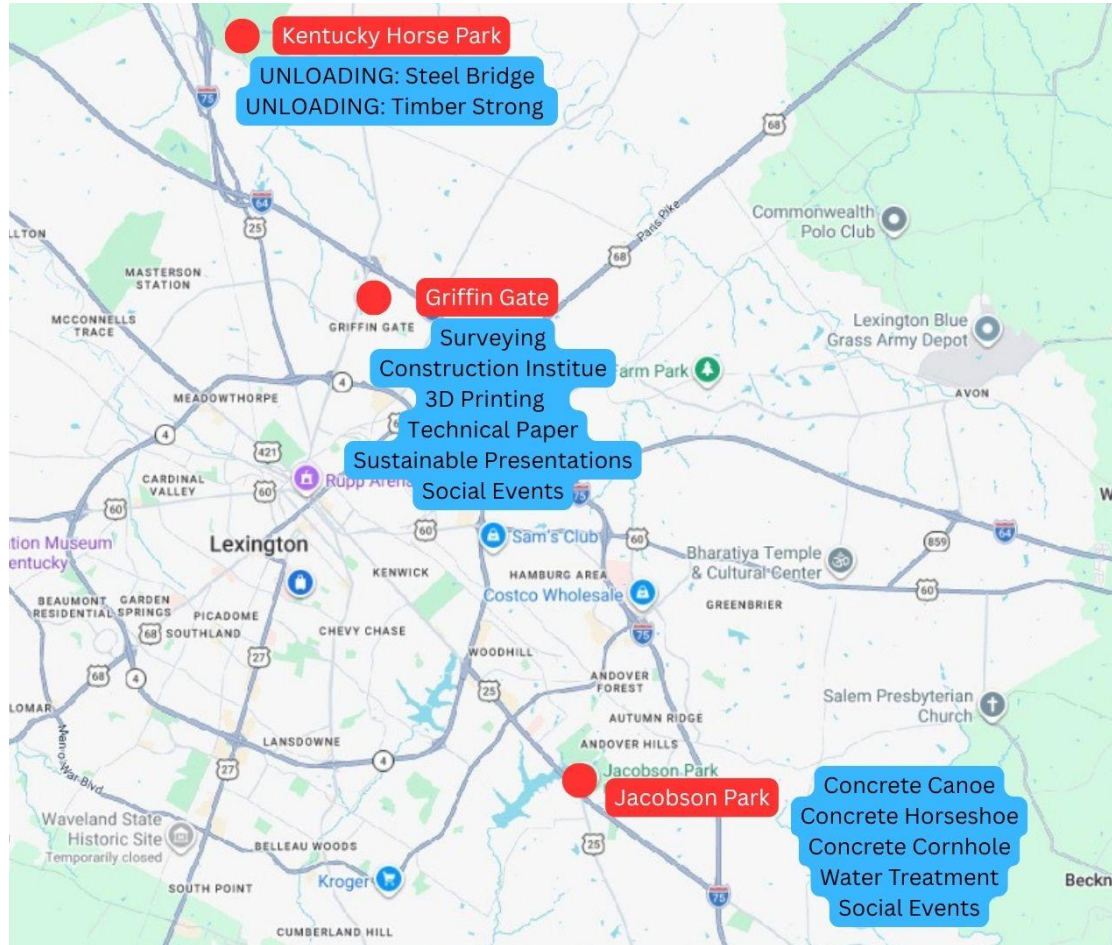
PRESENTED BY



**FRIDAY**



# Friday Locations



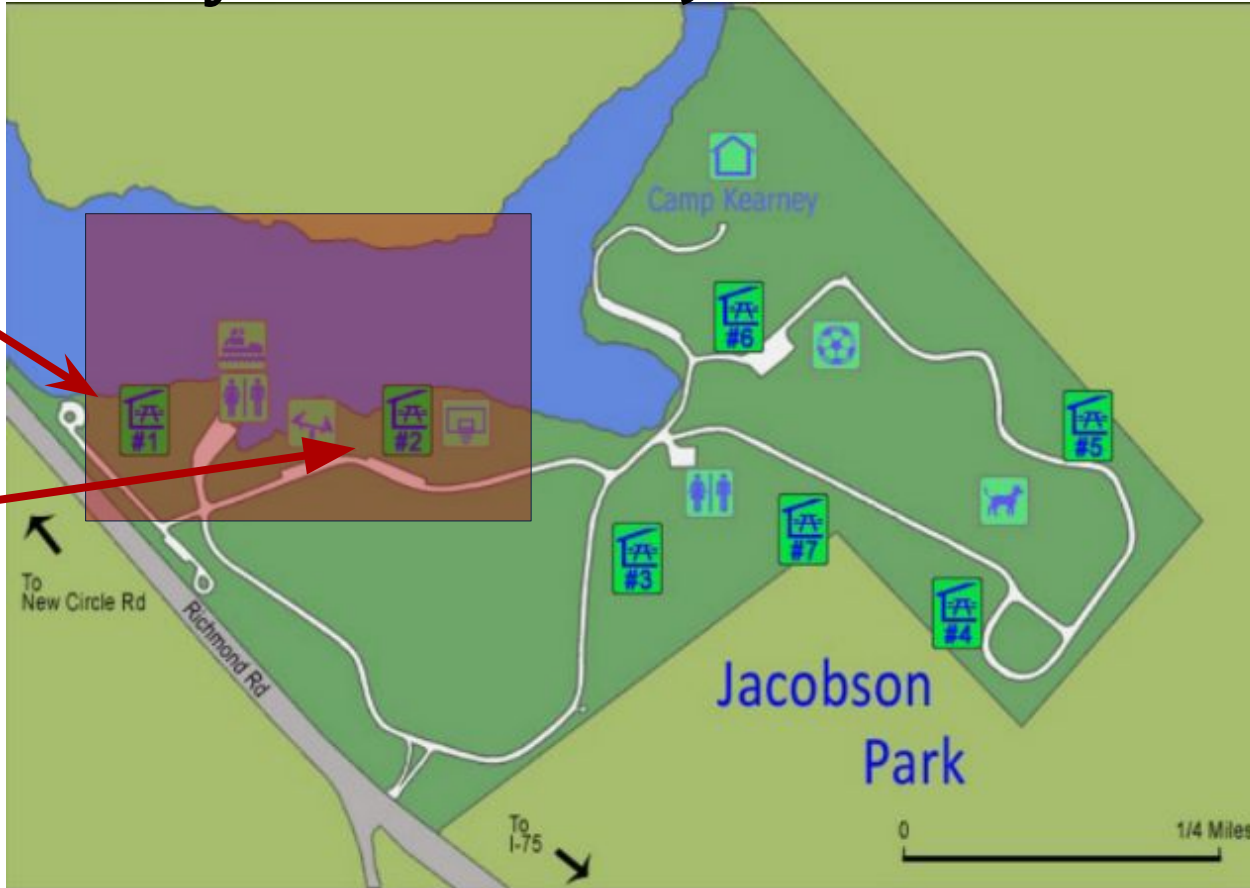
# Friday Locations - Jacobson Park

**Shelters 1 and 2** will be available for use.

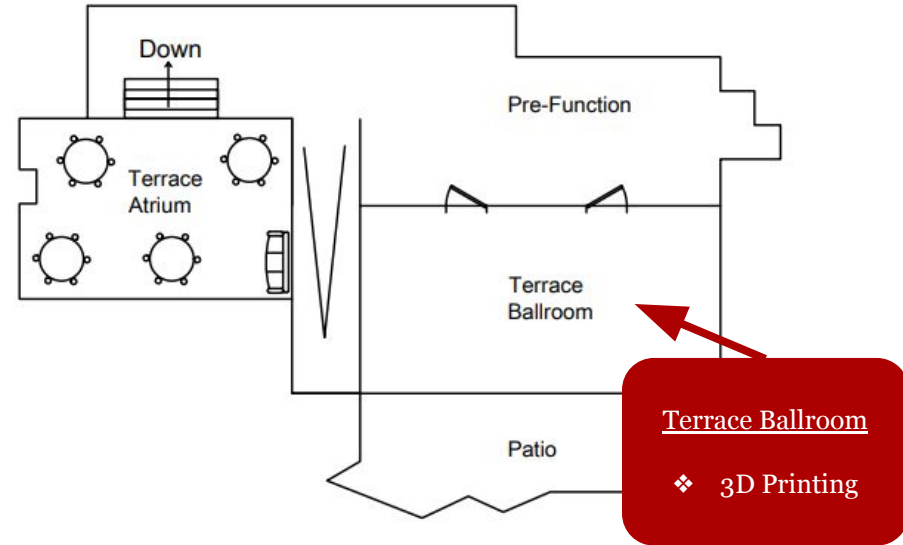
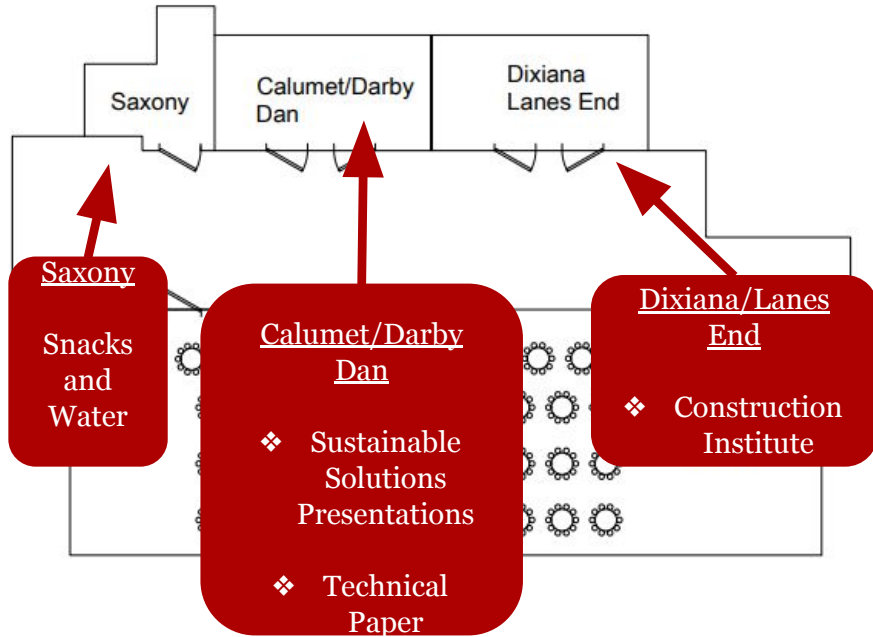
**Shelter 1:**  
Concrete Canoe

**Shelter 2:** Water Treatment, Concrete Cornhole, and Concrete Horseshoe

Indoor restrooms are located near shelters #1 and #2.



# Friday Locations - Griffin Gate

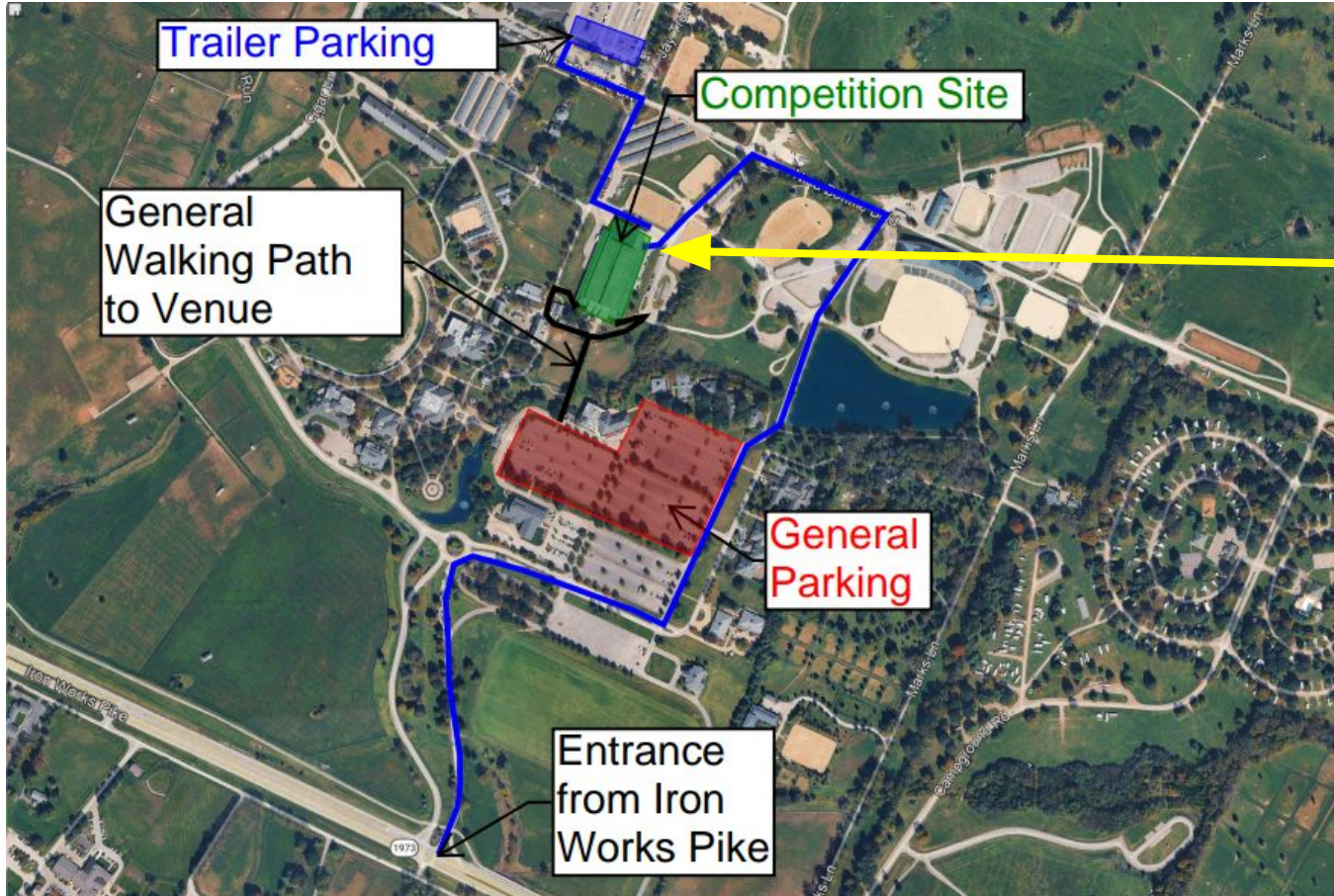


All meeting rooms are located on the first floor beyond the lobby. The **Saxony**, **Calumet**, and **Dixiana** rooms are situated to the left of the lobby, while the **Terrace Ballroom** is located to the right. [Tour the venue!](#)

# Friday Locations - Griffin Gate



# Friday Locations - Kentucky Horse Park



Timber Strong  
and Steel  
Bridge  
**Unloading**

Start at 5:00  
PM on Friday,  
April 10th.

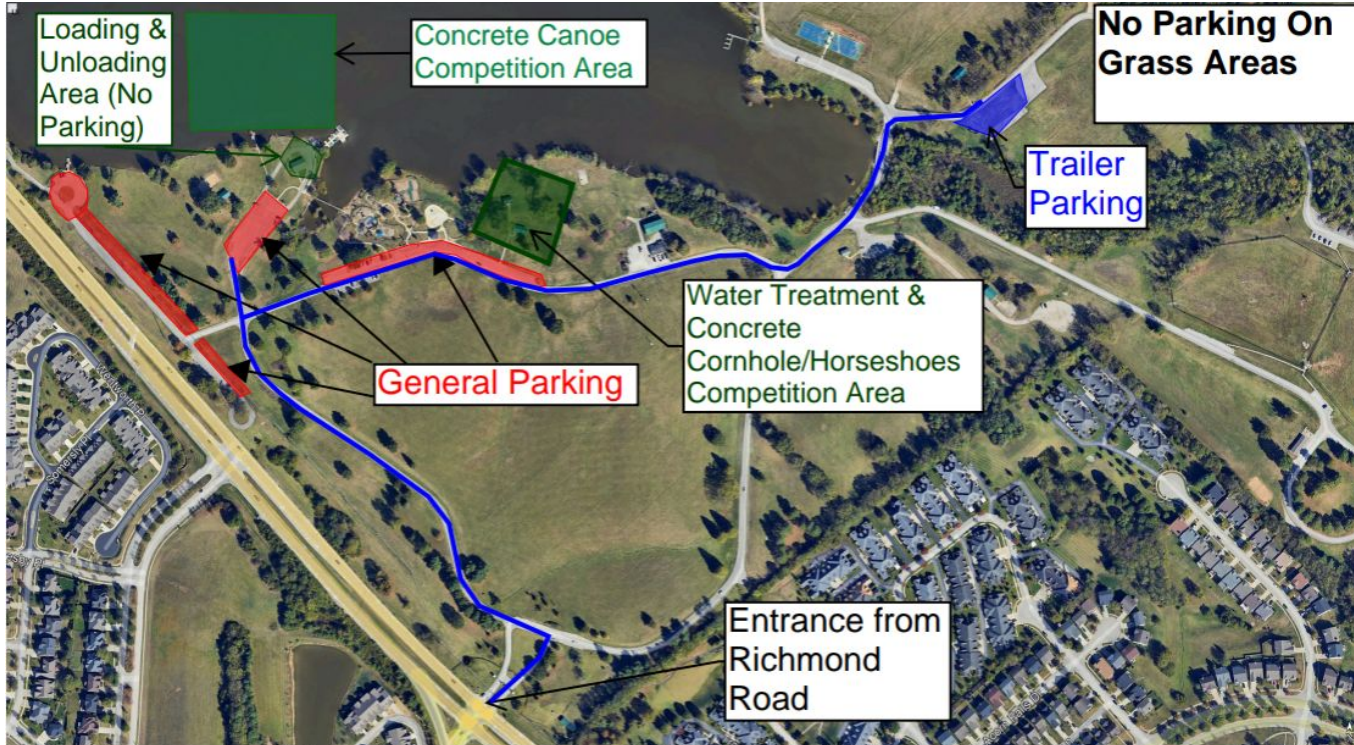
Will not have  
access to the  
arena before  
5:00 PM.

# Friday General Parking

## Jacobson Park



Free Parking available for all. Please do not park on the grass!



# Friday General Parking

---

## Griffin Gate

Free General Parking will be available at Griffin Gate at any of their parking lots.

---

