

Mailer 3 - Final Symposium Information
2025 ASCE Mid-America Student Symposium
Hosted by University of Nebraska
April 3 – April 5, 2025



March 13, 2025

Dear ASCE Student Chapter of the ASCE Mid-America Student Conference:

This is your **2025 ASCE Mid-America Student Symposium** Mailer 3, the last of three informational packets to be sent to each of the participating ASCE Student Chapters in our Student Conference.

Please carefully read this information and forward copies to the appropriate members in your ASCE Student Chapter and team members for each team competing at the student symposium. Do not delete this mailer as information given within may not be repeated in subsequent mailers. Enclosed you will find the following information:

- Mailer 3 Confirmation and registration reminders,
- Safety-first culture information,
- Competition safety information,
- ASCE Civil engineering Student Championships T-Shirt collection request
- Business Meeting information,
- Maps, directions, and parking information,
- Non-competition event information,
- Competition presentation and display information,
- Social network information,
- Final student symposium schedule,
- Final presentation schedules,
- Final deadlines,
- Society and local competition information,
- ASCE Pop-Up Leadership Workshop information,
- Student Symposium Paper Competition information,
- ASCE Society Competition eligibility requirements,
- Sponsor recognition, and
- Hotel information.

*Receipt of this mailer should be confirmed by completing the Mailer 3 Acknowledgment Form by March 20, 2025.
Please note the individual registration deadline is March 20, 2025.*

If you have any questions, feel free to contact us at our general student symposium e-mail address, listed below. All symposium information such as events, mailers, policies, rules, etc. will be posted on our website and are also listed below.

We look forward to your participation in the 2025 ASCE Mid-America Student Symposium and providing an opportunity to engage with other student chapters and ASCE Region Leadership.

Sincerely,

Mia Toigo
Chair, 2025 ASCE Mid-America Student Symposium
University of Nebraska-Lincoln

Anna Schuppel
Chair, 2025 ASCE Mid-America Student Symposium
University of Nebraska-Lincoln

ASCE Student Symposium website	https://studentsymposium.asce.org/mid-america/
General symposium email address	nebraskasympoium.2025@outlook.com
Symposium GroupMe	https://groupme.com/join_group/104892582/y6bAaqd5

Mailer 3 Receipt Confirmation & Registration

STEP 1 - Mailer 3 Receipt Confirmation - *required*

Follow the link below to complete the Mailer 3 Receipt Confirmation due no later than Thursday, March 20, 2025.

Mailer 3 Receipt Confirmation Link – <https://forms.office.com/r/BVsbEWwv5S>

REGISTRATION REMINDERS

STEP 2 - Individual Registration Form - *required*

Individual Registration Form is due before March 20.

Please visit our symposium website at [Individual Registration - Mid-America](#) to register for the 2025 ASCE Mid-America Student Symposium.

The Individual Registration Form must be filled out by *ALL individuals* attending the symposium including chapter members, team competitors, chapter spectators, guest teams, faculty advisors, volunteers, judges, and ASCE Region Leadership. The Individual Registration Form contains liability waiver information required by ASCE that must be reviewed and acknowledged by every individual attending, participating, and/or spectating at the symposium.

STEP 3 - Individual Registration Payment - *required*

Individual Registration is \$50 per person. Registration form and payment are due by March 20.

For individuals paying by credit card, go to: <https://marketplace.unl.edu/default/coe-asce-mid-america-student-symposium-2025.html>.

For individuals paying by check, make check payable to **University of Nebraska-Lincoln**
Attn: Candace Barnes
844 N 16th St
C190 Scott Engineering Center
Lincoln, NE 68588-0531

If your chapter is not participating in the 2025 ASCE Mid-America Student Symposium, please email nebraskasympoium.2025@outlook.com.

If your chapter will NOT be participating in the 2025 ASCE Mid-America Student Symposium, please email nebraskasympoium.2025@outlook.com.

Safety-First Culture Information

ASCE and the University of Nebraska are encouraging a Safety-First Culture during the student symposium. We encourage all symposium participants to embrace this concept by thinking about safety in their activities coming to, returning from, and while at our symposium. We want **every** symposium participant to return home safe and healthy.

To generate a Safety-First Culture, we have designated Peter Hilsabeck as our lead symposium safety officer, as well as Carlos Francis and Taylor Bond as fellow symposium safety officers. Further, be on the lookout for safety information at the symposium, such as the location of first-aid supplies, who in the crowd have first-aid training and Safety Moments.

What is a Safety Moment? A Safety Moment consists of a quick discussion on an activity-specific, site-specific, or general safety topic. The Safety Moment may be presented by the leader of an activity, the symposium safety officer, or a member of the host symposium planning team. We ask that all participants give their undivided attention to the Safety Moment discussion and embrace the safety-first concept.

If an injury does occur during the symposium, it should be reported to the competition head judge, symposium safety officer, or activity leader immediately so that appropriate action can be taken based on the injury. If it is a true emergency, please call 911 first.

Contact information for the symposium safety officers and key host school representatives is listed below. Please keep this list close during the symposium and we encourage you to program the symposium safety officers' phone numbers into your cell phone.

Symposium Safety Officer(s)

Peter Hilsabeck – 402-432-9752
Carlos Francis – 402-860-6518
Taylor Bond – 402-366-0932

Host School Faculty Advisor(s)

Joshua Steelman – 217-419-0431
George Hunt – 402-660-6019

As a best practice, we strongly recommend that faculty advisors keep and maintain on-hand a list of emergency contact information for their university and participating students. ASCE and the student symposium host do not collect emergency contact information from registrants.

In the spirit of a Safety Moment, here are some safe driving habits to keep in mind as you travel to the student symposium:

- Driving at the speed limit has proven to save lives.
- Do not drive when tired. Swap drivers often.
- Minimum of two people awake at all times when wheels are rolling.
- Be aware of how larger/heavier vehicles behave when stopping or turning.
- Be aware of your surroundings when backing any vehicle, especially trailers. Better yet, avoid backing up at all, if possible.
- Use a spotter to watch when you must back up a vehicle.
- Slow down when the conditions warrant (rain, snow, darkness, pedestrians nearby).
- Perform a circle of safety around your vehicle to identify what is in your blind spots.

Competition Safety Information

Please see the competition rules for full details. If there is a discrepancy between the rules and the information listed below, the competition rules are to be followed.

ASCE Concrete Canoe Competition: Safety gear (closed-toe water shoes and Personal Floatation Device (life jacket)) for each paddler is the responsibility of each team. ([Exhibit 9: Race Regulations & Safety](#))

AISC ASCE Student Steel Bridge Competition: Personal protective equipment is the responsibility of each team. During all construction activities, builders must wear hard hats and protective eyewear or safety goggles ([Section 10.1.6](#)). During all loading activities, competitors must wear hard hats, protective eyewear or safety goggles, work gloves, and steel toe or composite work boots that extend above the ankle ([Section 11.2.1.3](#)). The hardhats must meet ANSI standard Z89.1, and the protective eyewear or safety goggles must meet ANSI standard Z87.1.

Surveying Competition: Team members are responsible for providing their own required safety equipment including closed-toe shoes and safety-colored shirts or vests to participate in the field tasks. ([Section 6: Safety](#))

ASCE 3D Printing Competition: Teams are responsible for providing their own eye protection, work gloves, and closed-toe shoes, which must be worn by all active participants handling the bridge and during loading and testing. [Section 5: Safety](#)

Concrete Bowling Competition: Closed-toed shoes are required for the duration of the competition and are the responsibility of each team. Eye protection and optional work gloves provided by the host school must be worn by all individuals in the Toughness testing room.

ASCE Concrete Cornhole Competition: Closed-toed shoes are required for the duration of the competition and are the responsibility of each team.

Championship Shirt Project

This year the host of the ASCE Civil Engineering Student Championships is California Polytechnic State University, San Luis Obispo, which will take place June 27-29, 2025. The host team for the final's competition is putting together a display at the event to honor the hard work and dedication of all teams that competed at a regional symposium. We have nearly 850 teams competing in the 7 Society competitions across the 21 regional symposia this year! The final display will be shared on their Instagram during the finals and ASCE will post it on the main ASCE website.

Cal Poly SLO is asking each regional host to collect a t-shirt from each ASCE student chapter in attendance. We will collect T-shirts during Check-In & Registration.



Business Meeting ([Eligibility Requirement](#))

The Business Meeting is scheduled to take place on Thursday, April 3, 2025, at 4:00 pm.

The draft business meeting agenda attached to the Mailer 3 email. If you have additional agenda items and/or motions that your student chapter would like to be included in the agenda, please submit them to Mia Toigo at email nebraskasympposium.2025@outlook.com by March 20.

Note that the business meeting is officially the business meeting for the Student Conference Board of Delegates. The Board of Delegates consists of two student delegates (preferably a senior or junior in an ASCE leadership position and a sophomore in or aspiring to an ASCE leadership position) and the faculty advisor from each student chapter. Each student delegate must be a member in good standing with their student chapter and the Society. Each student chapter in the Student Conference has one vote.

At least one member of your ASCE student chapter must participate in the Business Meeting as part of the eligibility requirements to advance to finals for Concrete Canoe, Steel Bridge, Sustainable Solutions, and Surveying.

[Click here for ASCE Eligibility Requirements](#)

Maps, Directions, and Parking Information

Map to Kiewit Hall



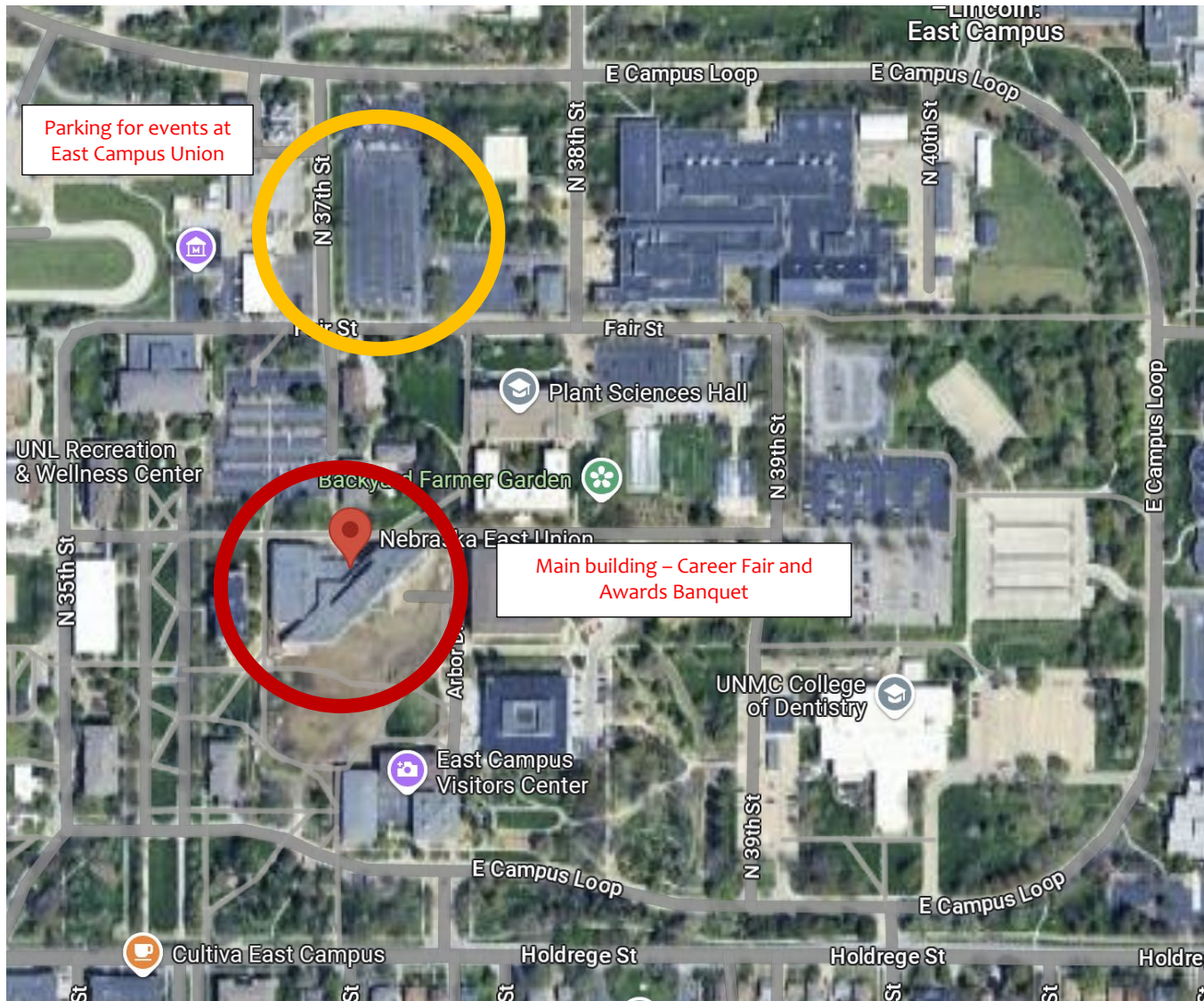
Map of the inside of Kiewit Hall: <https://engineering.unl.edu/building-maps-kiewit-hall/>

Kiewit Hall Address: 1700 Vine St, Lincoln, NE 68588

Whittier School Address: 2200 Vine St, Lincoln, NE 68588

- Parking lots are located off N 22nd St. Parking attendants will be present to help direct traffic.
 - Vehicles will be parked in the Southeast corner of the lot.
 - Parking permits will be distributed upon arrival at the parking lot.

Map to Nebraska East Campus Union



Map of the inside of East Campus Union: <https://cms.unl.edu/student-affairs/unions/sites/unl.edu.student-affairs.unions/files/media/file/2023%20NEU%20Floor%20plans.pdf>

Kiewit Hall Address: 1705 Arbor Dr, Lincoln, NE 68503

- The recommended parking lot is located at the intersection of Fair St & 37th St.
 - Parking is limited to A and C lots for East Campus.
 - No parking permits are required for this location.

This aerial map of Holmes Lake and its surrounding area is annotated with red arrows and text boxes to specify event locations. The annotations are as follows:

- Trailer parking at Parking Lot 5:** An arrow points to Holmes Lake Parking Lot 5, located on the north shore of the lake.
- Food at Parking Lot 3:** An arrow points to Holmes Lake Parking Lot 3, situated on the east shore.
- Meal tent (60' x 40'):** An arrow points to a location on the east shore, just south of Parking Lot 3.
- Canoe float test and launch point(s):** Two arrows point to the southern shore of the lake, indicating the area for canoe activities.
- Canoe unloading/reloading and displays:** An arrow points to a location on the east shore, south of the meal tent.
- Passenger vehicles at Parking Lots 2 and 4:** An arrow points to the area between Holmes Lake Parking Lot 2 and Holmes Lake Parking Lot 4 on the north shore.

The map includes various geographical features and labels such as Holmes Lake, Van Dorn St, Holmes North Shore Rd, Holmes South Shore Rd, and several local businesses and landmarks like the US Army Corps of Engineers and Holmes Lake Sand Volleyball Courts.

Address: 70th & Normal Blvd Lincoln, NE 68506

- Parking lots are located off Holmes Lake North Shore Road, which can be accessed by Normal Boulevard or South 70th Street.
 - Park pedestrian vehicles in Holmes Lake Parking Lot 2 & 4.
 - Park trailer vehicles in Holmes Lake Parking Lot 5.
 - No parking permits are required for this location.

Maps, Directions, and Parking Information

Public Transportation

Information about the Lincoln, Nebraska bus system can be found at the following link:

<https://www.lincoln.ne.gov/City/Departments/LTU/StarTran/Routes>

Non-Competition Event Information

Registration: April 3, 2025, from 12:00 pm-3:00 pm at Kiewit Hall, 1st Floor (University of Nebraska-Lincoln, 1700 Vine St, Lincoln, NE 68588). Student chapters will check in to confirm their arrival and swag bags will be distributed. Submittals for relevant competitions will be turned in to the host school at this time.

Welcoming Ceremony: April 3, 2025, at 3:00 pm at Kiewit Hall, 2nd Floor. This event will welcome all attendees to the conference, review the events and schedule, outline safety plans and guidelines, and allow students to meet individuals in charge of the Symposium.

Career Fair: April 5, 2025, at 5:00pm at East Campus Union in the Prairie Room (1705 Arbor Dr, Lincoln, NE 68503). Students will have the opportunity to network with industry professionals. Business casual is recommended.

ASCE Information Table: April 3-4, 2025, from 6:00-8:00 pm, and April 5, 2025, from 10:00 am -12:00 pm in Kiewit Hall, 2nd Floor East Commons. Stop by the table to learn more about ASCE from the following current members of ASCE Nebraska.

- Braden Labenz/City of Columbus
- Andrew Eisenbraun/JEO
- Jack Wilke/HDR
- Garrett Martindale/HDR
- Tregan Albers/Kirkham Michael
- Sam Allen/Clark & Enersen
- Daren Konda/ Nebraska Game & Parks Commission

Banquet/Awards Ceremony: April 5, 2025, at 6:00 pm at East Campus Union in the Great Plains Rooms (1705 Arbor Dr, Lincoln, NE 68503). Attire for this event is business casual.

Business Meeting: April 3, 2025, at 4:00 pm, in Kiewit Hall, A203. By invitation only, see page 5.

Opening Speaker: April 3, 2025, at 4:00 pm, in Kiewit Hall 2nd Floor and A211. Individuals not attending the business meeting are highly encouraged to attend this technical speaker, located immediately following and in the same location as the Welcome Ceremony.

ASCE Pop-Up Leadership Workshops: 1 or 2 sessions will be offered at the Symposium. See page 25 for more information.

- April 3, 2025, from 8:15-9:15 pm at Kiewit Hall, A253
- April 5, 2025, from 11:00 am-12:00 pm at Kiewit Hall, A211 (*tentative*)

Professional Development Workshops: 2 speaker sessions will be offered at the Symposium.

- April 4, 2025, from 6:30-7:30 pm at Kiewit Hall, A211
- April 5, 2025, from 1:00-2:00 pm at Kiewit Hall, A211

Kiewit Hall Tours: April 3, 2025, from 5:00-6:30 PM in Kiewit Hall, 1st Floor. There will be a series of three tours starting every half hour (5:00, 5:30, and 6:00 PM). Tours of the newly built Kiewit Hall, opened in 2024, will be given by the College of Engineering Ambassadors.

Outdoor Social Event: April 3, 2025, from 6:00-8:00 PM on the north side of Kiewit Hall in the Kiewit Hall Courtyard & N. 17th St Courts. Students will have the opportunity to connect with other student chapters over games of sand volleyball, basketball, cornhole, outdoor Jenga, outdoor connect four, Spikeball, and more.

Competition Presentation & Display Information

All Competitions:

A local computer that is connected to projectors will be present at each digital presentation location. **Multiple options for delivering digital presentations will be provided to student teams. Student teams can choose the option most preferable to the team.** At each digital presentation location, the host will provide:

1. a Wi-Fi connection
2. a USB-A connection for file transfer from a flash drive brought by student teams,
3. video source switching capability and an HDMI cable for presentations from laptops brought by student teams (note: teams choosing this option must bring a laptop with an HDMI output port), and
4. an internet connection so that presentation files shared online can be downloaded to and displayed from the local computer.

Please see the competition rules for full details. If there is a discrepancy between the rules and the information listed below, the competition rules are to be followed.

ASCE Concrete Canoe Competition: Teams are responsible for providing all necessary materials for the display portion of the competition. ([Section 7: Prototype Display Requirements](#)). Teams should bring presentations on a thumb drive for the technical presentation ([Section 8: Technical Presentation](#)).

AISC ASCE Student Steel Bridge Competition: Teams are responsible for providing all necessary materials for the aesthetic display portion of the competition. ([Section 6.2.1](#))

Surveying Competition:

Topographic Map Display: It is the responsibility of each team to bring one (1) 24-inch by 36-inch paper copy set of the topographic mapping project to the symposium, which will be used for public display at the student symposium ([Section 7.3. Paper Copy Submittals](#)). The paper copy set shall be submitted to the student symposium host at check-in.

(This copy is for the public display and does not replace the required online submission due on February 24, 2025, by 5:00 pm EST.)

- Teams are encouraged to bring a standard 6-ft tablecloth displaying your school's name, logo, or chapter name (*not required*).
- Teams should plan to stay with their topo map public display to discuss their project with spectators.

Field Task Equipment: Please refer to [Appendix D, Equipment List, in the rules](#) for a full list of required items for the competition. All items must be supplied by each individual team at the symposium competition.

Sustainable Solutions:

Poster Session: For teams competing in the Sustainable Solutions Competition: we will provide magnetic whiteboards and magnets for the poster presentation. These whiteboards are 8'W x 6'T. Whiteboard [Example](#).

- Teams will be expected to stay with their poster during the display to discuss their project with spectators.

ASCE 3D Printing Competition: For teams competing in the ASCE 3D Printing Competition: we will provide magnetic whiteboards and magnets for the poster presentation. These whiteboards are 8'W x 6'T. Whiteboard [Example](#).

Student Symposium Paper Competition: See above in red

Social Network Information

GroupMe will be the main form of communication between schools before, during and after the symposium. The GroupMe can be accessed by following the link below or scanning the provided QR code.

https://groupme.com/join_group/104892582/y6bAaqd5



Final Student Symposium Schedule

Drug and Alcohol-Free Events

The use of drugs and alcohol is prohibited at all ASCE Student Symposium events.

A more detailed schedule with room locations is attached to the email.

TIME	THURSDAY				
7:00					
7:30					
8:00					
8:30					
9:00					
9:30					
10:00					
10:30					
11:00					
11:30					
12:00	Registration				
12:30					
1:00					
1:30					
2:00					
2:30					
3:00	Welcome Ceremony				
3:30					
4:00	Business Meeting			Opening Speaker	
4:30					
5:00	Dinner	Break			
5:30		FE Quiz Bowl Preliminary Round			
6:00			Concrete Bowling	Captains Meeting - Surveying	Outdoor Social Event
6:30	Concrete Cornhole				
7:00		Captains Meeting - C.C., S.S., Mead Paper, 3D Printing		Surveying Plan Set Display	
7:30	FE Quiz Bowl Finals Round		1st & 2nd Year Mystery Design Challenge		
8:00		Pop-Up Leadership Workshop 1			
8:30					
9:00					
9:30					
10:00					

TIME	FRIDAY				
7:00	Concrete Canoe Competition				
7:30		Surveying Field Task Session I			
8:00					
8:30					
9:00		Surveying Field Task Session II			
9:30					
10:00					
10:30		Surveying Field Task Session III			
11:00					
11:30					
12:00		Lunch			
12:30					
1:00		Surveying Task IV			
1:30					
2:00					
2:30	Surveying Task V				
3:00					
3:30					
4:00	Break				Surveying Task VI
4:30					
5:00	Captains Meeting - Steel Bridge		Sustainable Solutions Posters - Session 1	Concrete Bowling Strength Testing	3D Printed Bridge Competition
5:30	Concrete Canoe Business Presentations	Mead Paper Presentations		Transportation Competition, Surveying Topo Mapping Presentation	
6:00					
6:30			Professional Development Workshop 1		
7:00					
7:30					
8:00					
8:30					
9:00					
9:30					
10:00					

TIME	SATURDAY		
7:00	Steel Bridge Competition		
7:30			
8:00		Sustainable Solutions Posters - Session 2	
8:30			
9:00			
9:30			
10:00		Sustainable Solutions Presentations	
10:30			
11:00			Pop-Up Leadership Workshop 2
11:30			
12:00		Lunch	
12:30			
1:00			Professional Development Workshop 2
1:30			
2:00			
2:30			
3:00			
3:30			
4:00	Break		
4:30			
5:00	Career Fair		
5:30			
6:00	Banquet		
6:30			
7:00			
7:30			
8:00			
8:30			
9:00			
9:30			
10:00			

Final Presentation Schedules

Concrete Canoe Presentations Date: Friday, April 4	
<u>School</u>	<u>Timeslot</u>
<u>University of Iowa</u>	<u>6:00 PM</u>
<u>Kansas State University</u>	<u>6:15 PM</u>
<u>South Dakota State University</u>	<u>6:30 PM</u>
<u>Missouri University of Science & Technology</u>	<u>6:45 PM</u>
<u>Iowa State University</u>	<u>7:15 PM</u>
<u>Dordt University</u>	<u>7:30 PM</u>
<u>University of Missouri-Columbia</u>	<u>7:45 PM</u>
<u>University of Kansas</u>	<u>8:00 PM</u>
<u>University of Missouri-Kansas City</u>	<u>8:15 PM</u>
<u>University of Nebraska-Lincoln</u>	<u>8:45 PM</u>
<u>Southern Illinois University Carbondale</u>	<u>9:00 PM</u>
<u>Benedictine College</u>	<u>9:15PM</u>
<u>University of Nebraska-Lincoln at Omaha</u>	<u>9:30 PM</u>
<u>Southern Illinois University Edwardsville</u>	<u>9:45 PM</u>

Sustainable Solutions Presentations
Date: Saturday, April 5

<u>School</u>	<u>Timeslot</u>
<u>Missouri University of Science & Technology</u>	<u>9:45 AM</u>
<u>University of Nebraska-Lincoln</u>	<u>10:05 AM</u>
<u>Missouri State University</u>	<u>10:25 AM</u>
<u>Kansas State University</u>	<u>10:45 AM</u>
<u>Saint Louis University</u>	<u>11:05 AM</u>
<u>University of Iowa</u>	<u>11:25 AM</u>
<u>University of Missouri-Columbia</u>	<u>11:45 PM</u>

Surveying Presentations
Date: Friday, April 4

<u>School</u>	<u>Timeslot</u>
<u>Southern Illinois University Carbondale</u>	<u>7:00 PM</u>
<u>Missouri State University</u>	<u>7:20 PM</u>
<u>Kansas State University</u>	<u>7:40 PM</u>
<u>University of Nebraska-Lincoln</u>	<u>8:20 PM</u>
<u>Saint Louis University</u>	<u>8:40 PM</u>
<u>University of Iowa</u>	<u>9:00 PM</u>

Final Presentation Schedules

3D Printing Presentations Date: Friday, April 4	
<u>School</u>	<u>Timeslot</u>
<u>Missouri State University</u>	<u>5:30 PM</u>
<u>Benedictine College</u>	<u>6:05 PM</u>
<u>William Jewell College</u>	<u>6:40 PM</u>
<u>University of Nebraska-Lincoln</u>	<u>7:15 PM</u>
<u>University of Iowa</u>	<u>8:00 PM</u>
<u>Kansas State University</u>	<u>8:35 PM</u>
<u>Saint Louis University</u>	<u>9:10 PM</u>

Student Symposium Paper Presentations
Date: Friday, April 4

<u>School</u>	<u>Timeslot</u>
<u>University of Missouri-Kansas City</u>	<u>6:00 PM</u>
<u>William Jewell College</u>	<u>6:10 PM</u>
<u>Missouri University of Science & Technology</u>	<u>6:20 PM</u>
<u>Kansas State University</u>	<u>6:50 PM</u>
<u>Iowa State University</u>	<u>7:00 PM</u>
<u>Dordt University</u>	<u>7:10 PM</u>
<u>University of Kansas</u>	<u>7:20 PM</u>
<u>Benedictine College</u>	<u>7:40 PM</u>
<u>Saint Louis University</u>	<u>7:50 PM</u>
<u>University of Nebraska-Lincoln</u>	<u>8:00 PM</u>
<u>Southern Illinois University Carbondale</u>	<u>8:10 PM</u>
<u>Missouri State University</u>	<u>8:30 PM</u>
<u>Southern Illinois University Edwardsville</u>	<u>8:40 PM</u>
<u>University of Iowa</u>	<u>8:50 PM</u>
<u>University of Missouri-Columbia</u>	<u>9:00 PM</u>
<u>South Dakota State University</u>	<u>9:10 PM</u>

Final Deadlines

We highly recommend that you share this information with your chapter, including any competition captains.

March 13	Mailer 3 (final) sent to each student chapter.
March 20	Mailer 3 Receipt Confirmation due from each student chapter.
March 20	Final Date for Late Registrations (with no guarantee of T-shirt/Swag)
April 3-5	2025 ASCE Mid-America Student Symposium

Society Competition Information

SOCIETY COMPETITIONS AT THE 2025 ASCE MID-AMERICA STUDENT SYMPOSIUM

Society-wide Competitions

ASCE Sustainable Solutions Competition



ASCE UESI Surveying Competition



AISC/ASCE Student Steel Bridge Competition

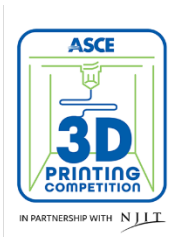


ASCE Concrete Canoe Competition



Society Pilot Competitions

ASCE 3D Printing Competition



Society competition rules can be found at:

<https://www.asce.org/communities/student-members/conferences/rules>

Concrete Canoe Information

Aesthetics Judging Information

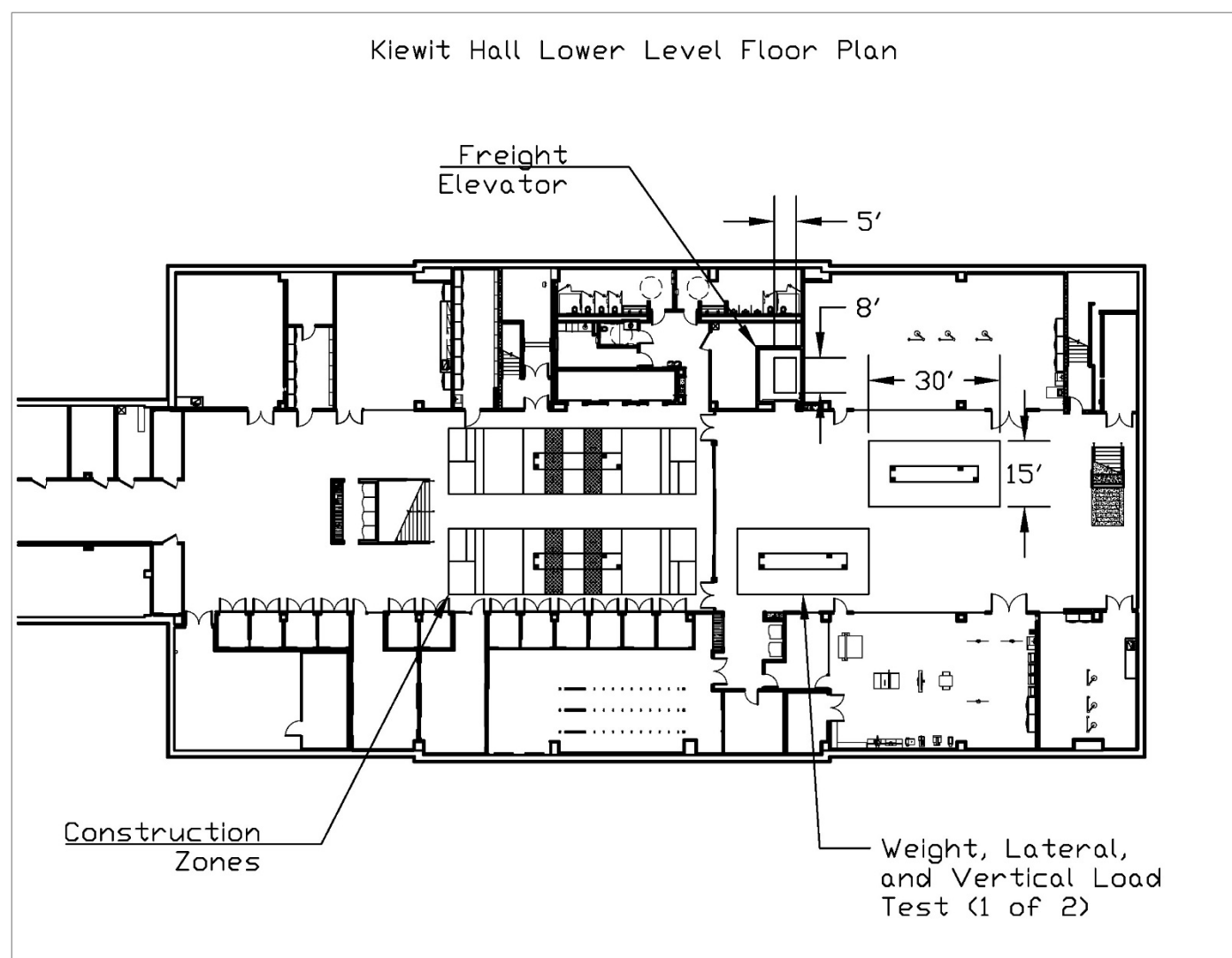
Concrete Canoe displays will be located on unpaved turf grass surfaces within Holmes Park (Google Street View of the planned display area: <https://maps.app.goo.gl/jLRgsFEb7mu7taJ5A>). We encourage teams to anticipate a minor surface grade (planned spaces vary in grade from 1% to 8%). There is some irregularity to the turf surface with minor indentions and irregularities. Weather conditions leading up to the event may make the turf space damp and soft. Plan accordingly and bring any materials necessary for your preferred display set up. A visual representation of the space where displays will be set up can be seen below, with tentatively identified 15 ft x 25 ft individual team display footprints shown as red rectangles.

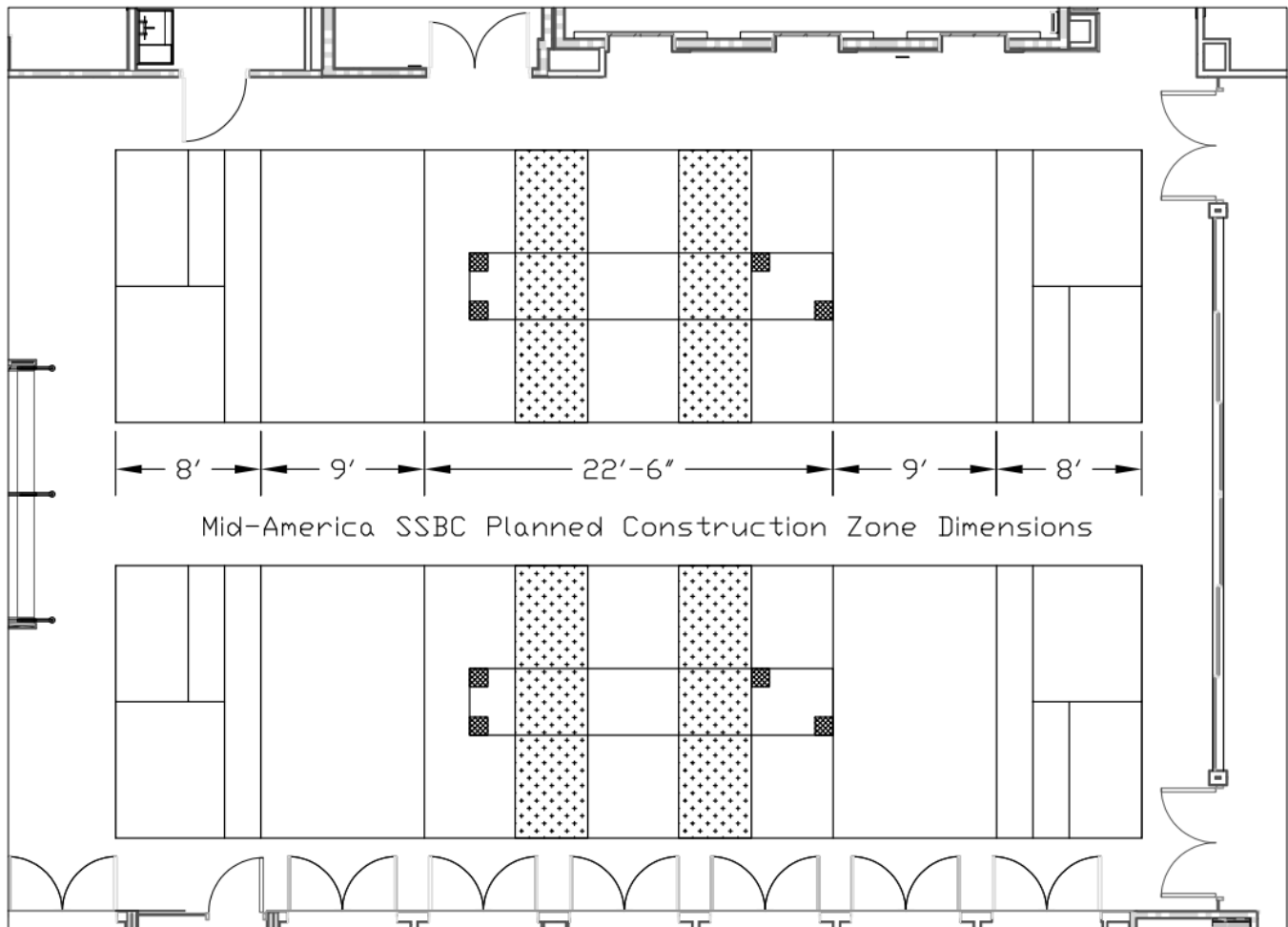


SSBC Information

Local Spatial Restriction Information

This year's AISC/ASCE Student Steel Bridge Competition will be held in the basement of Kiewit Hall on the University of Nebraska-Lincoln - City Campus. Due to space limitations, the dimensions of the transportation zone have been modified. The diagrams shown below lay out the specific local conditions that will be present in this year's Mid-America competition. Note – the maximum single object usable space in the freight elevator is 5' x 8'. **If additional space is required for teams to move materials between ground level and lower level, it is imperative to contact the host immediately to work out alternative arrangements.**





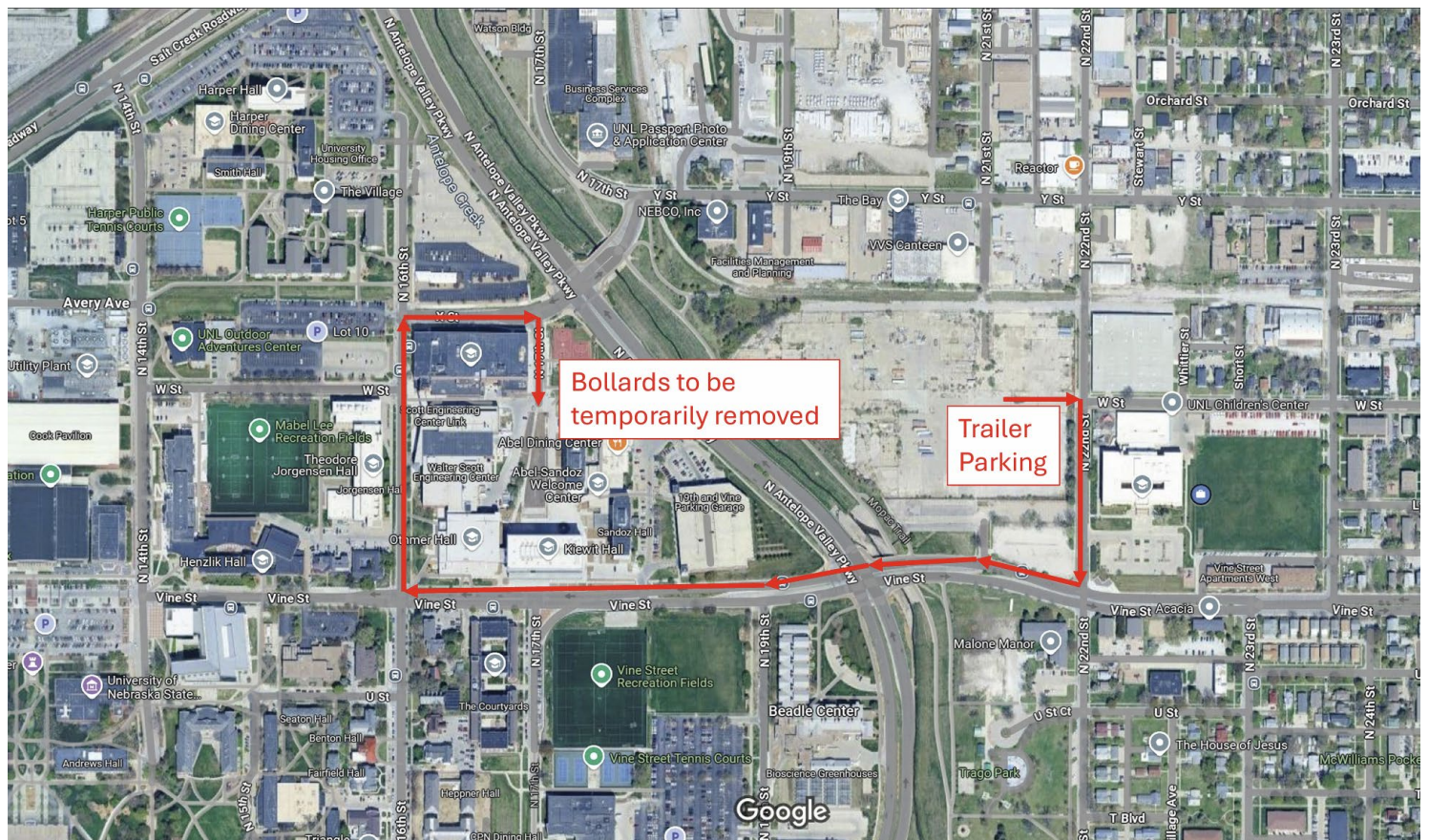
Loading & Unloading Schedule

Steel bridge unloading will take place on Thursday, April 3 from 12-3 during check-in and registration for the Symposium. Symposium staff will be on site to communicate and coordinate between the parking lot and Kiewit Hall. Teams will be expected to park their trailers in the lot at 22nd and W St (<https://maps.app.goo.gl/n8AHLKBLZW52vHzXA>). Drivers hauling trailers must wait at the parking lot to be directed to unload at Kiewit Hall. Maps showing the route for unloading will be provided at the parking lot.

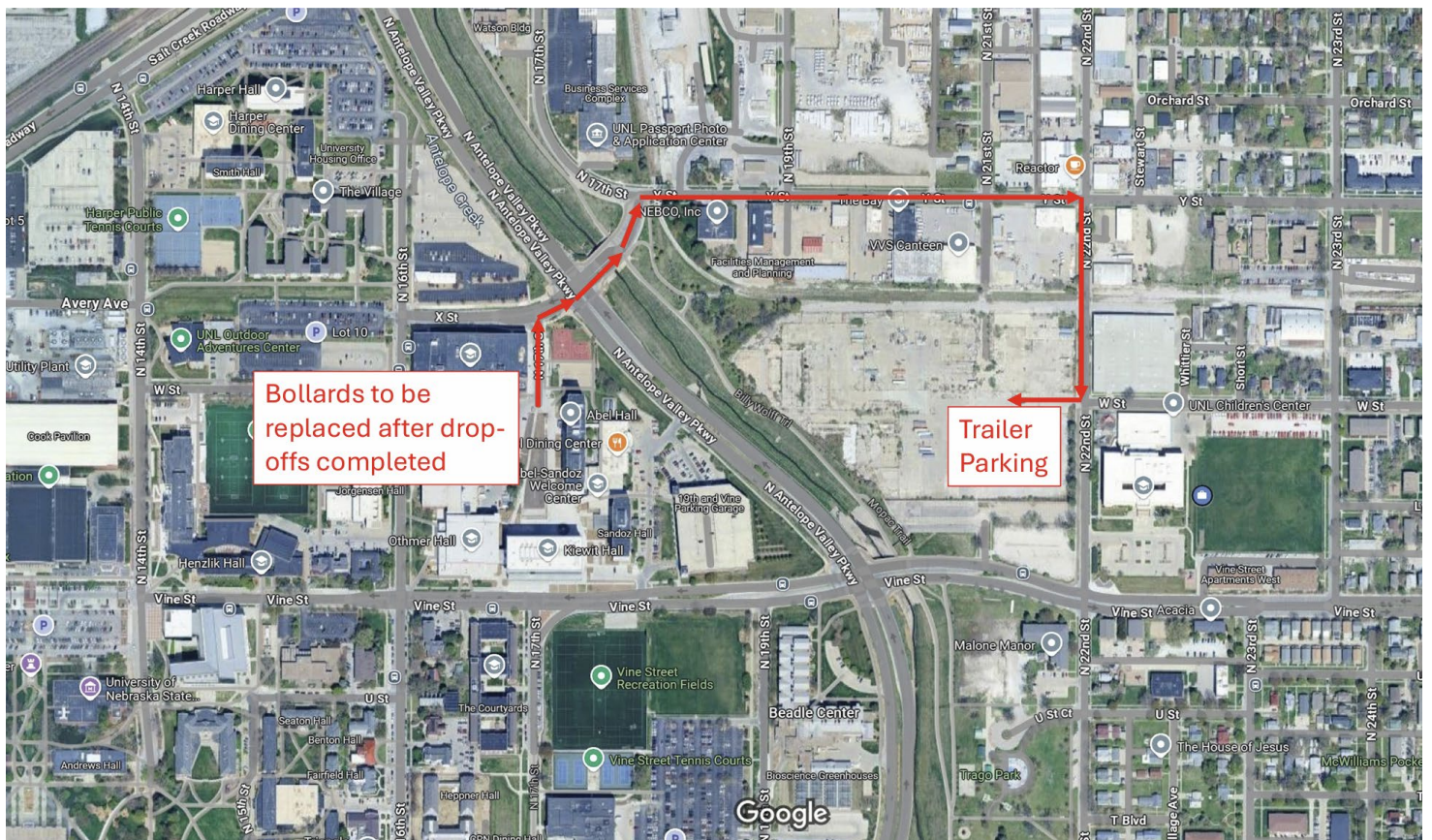
Unloading will occur in a fire lane. **To ensure safety, a driver CANNOT leave their vehicle unattended in a fire lane.**

Each school must designate team members separate from the driver to unload their Student Steel Bridge Competition materials at Kiewit Hall. These team members can park vans or passenger vehicles in the 22nd and W St lot and walk to Kiewit Hall for Symposium check-in, then wait at the unloading zone in Kiewit Hall for their team's unloading window.

Teams will be directed by Symposium Safety Officers when entering, navigating, and exiting the fire lane. Teams will be expected to follow instructions from Symposium Safety Officers and be patient, as only one trailer can be in the fire lane at any point in time.



Mailer 3 - Final Symposium Information
2025 ASCE Mid-America Student Symposium
Hosted by University of Nebraska
April 3 – April 5, 2025



Local Competition Information

LOCAL COMPETITIONS AT THE 2025 ASCE MID-AMERICA STUDENT SYMPOSIUM

Student Symposium Paper Competition <i>Participation is a requirement for advancement to Society-wide competition finals and SSBC National Finals</i>	Concrete Bowling Competition	Concrete Cornhole Competition
FE Quiz Bowl Competition	Transportation Competition	1st & 2nd Year Mystery Design Challenge

ASCE Pop-Up Leadership Workshops

A graphic with a dark blue background. The text "ASCE Pop-Up Leadership Shop" is written in large, bold, white and orange letters. The "Up" is in orange and has a small orange triangle above it. There are several orange triangles of different sizes scattered around the text. At the bottom, there is an orange banner with the text "Coming to Your Regional Symposium" and "SPRING 2025" in dark blue.

ASCE Pop-Up Leadership Shop

Coming to Your Regional Symposium **SPRING 2025**

Don't miss the opportunity to learn about professional skills you can use now and after graduation to help you get ahead. Pop-Up Leadership Workshops, presented by the Committee on Student Members and other Region leaders, will be held throughout the Symposia.

2025 ASCE Pop-Up Leadership Topics

- *The FE Exam and the Path to the PE / Thursday, April 3, 8:00 PM*
- *Tentative Second Workshop / Saturday, April 5, 11:00 AM*

ASCE Society Competition Eligibility Requirements

Competitions that advance to an ASCE Society-wide Competition Finals include the ASCE Concrete Canoe Competition, ASCE Sustainable Solutions Competition, and ASCE UESI Surveying Competition. The AISC/ASCE Student Steel Bridge Competition advances to the SSBC National Finals and follows the eligibility requirements below. See [SSBC Rules](#) for more information.

The purpose of student competitions is to provide student members career-enrichment opportunities to gain hands-on, practical experience and leadership skills. Society Competitions are an important and special opportunity to showcase the engineering and professional skills of student teams. As such, mutual respect is required for all stakeholders, including competitors, judges, hosts, and guests. Invitations to the Student Symposia and the ASCE Student Civil Engineering Championships/Society-wide Competition Finals are a privilege, not a right. Failure to act professionally can result in sanctions, disqualifications, and loss of invitations. Please note that the requirements for eligibility for Society-wide competition finals are more stringent than the requirements for participation at the student symposia competitions.

ELIGIBILITY FOR STUDENT SYMPOSIUM COMPETITION

The following qualifications are required of all ASCE Student Chapters to compete at the Student Symposia Competitions:

An ASCE Student Chapter must:

1. Be in good standing with ASCE:
 - a. Have paid their annual dues, as received by ASCE, **no later than the start of their Student Symposium.**
 - b. Have submitted their student chapter's full Annual Report or EZ Annual Reporting Form **no later than February 1, 11:59 p.m. EST.**

ELIGIBILITY FOR ASCE SOCIETY-WIDE COMPETITION FINALS

The following qualifications are required of all ASCE Student Chapters in order to advance to the ASCE Society-wide Competition Finals:

An ASCE Student Chapter must:

1. Be in good standing with ASCE:
 - a. Have paid their annual dues, as received by ASCE, no later than February 1, 11:59 p.m. EST.
 - b. Have submitted their student chapter's **full Annual Report, no later than February 1, 11:59 p.m. EST, and have received a minimum score of 25 points out of a possible 100.** **Student Chapters that submit an EZ annual reporting form do not qualify** to advance to competition finals; and
2. Attend and participate in their assigned Student Symposium as shown through their school's:
 - a. On-time attendance and active participation by a member of the ASCE Student Chapter at the Student Symposium Business Meeting.
 - b. Participation in the Student Symposium Paper Competition, including submission and presentation by a member of the ASCE Student Chapter. Note that any papers/presentations created for any other competition do not count as an entry into the Student Symposium Paper Competition.

Questions regarding eligibility should be directed to student@asce.org.

Hotel Information

Multiple hotel blocks with discounted rates have been reserved for ASCE student chapters for the entire duration for the symposium including the nights of April 3-5th. Space at each location is limited; we recommend you make reservations as soon as possible; **by the time this mailer has been sent out, some of the hotel block deadlines have already passed.** If you have any issues or concerns, please email Annie Meyers at amyers27@unl.edu.

Hilton Garden Inn Lincoln Downtown/Haymarket

- Address: 801 R St, Lincoln, NE, 68508
- Reservation Link: [Hilton Garden Inn Hotel Block](#)
- ASCE Symposium Rates: \$125 per night (includes breakfast, Wi-Fi, and pool; parking \$19 per vehicle per day)

Courtyard by Marriott Lincoln Downtown/Haymarket

- Address: 808 R St, Lincoln, NE, 68508
- Reservation Link: [Courtyard by Marriott Hotel Block](#)
- ASCE Symposium Rates: \$132 per night (includes Wi-Fi and fitness center; parking \$11.25 daily max in garage next door)

The Graduate by Hilton Lincoln

- Address: 414 N 9th St, Lincoln, NE, 68508
- Reservation Link: [The Graduate Hotel Block](#)
- ASCE Symposium Rates: \$149 per night (includes Wi-Fi, pool, fitness center, and parking suggested for small vehicles only; vans and trucks more suitable to park at “Haymarket Garage” for \$11.25 daily max)

Holiday Inn & Suites – Downtown

- Address: 905 O Street Lincoln, Nebraska 68508
- Reservation Link: [Holiday Inn & Suites - Downtown](#)
- Must enter the dates first, and then the room booking will pull up.
- ASCE Symposium Rates: \$100 per night, 49-K (includes breakfast, Wi-Fi, pool, fitness center, and parking for \$10/day/car or van or \$20/day/bus)

Tru by Hilton Lincoln East

- Address: 305 N 50th St, Lincoln, NE 68504
- Reservation Link: [Tru by Hilton Hotel Block](#)
- ASCE Symposium Rates: \$163 per night (includes breakfast, Wi-Fi, pool, fitness center, and parking)

Comfort Suites Lincoln East – Mall Area

- Address: 331 N Cotner, Lincoln, NE 68505
- Reservation Link: [Comfort Suites Hotel Block](#)
- ASCE Symposium Rates: \$120 per night, 10-QQ Suite (includes breakfast, Wi-Fi, pool, fitness center, and parking)

Hampton Inn & Suites I-80

- Address: 7343 Husker Circle, Lincoln, NE 68504
- Reservation Link: [Hampton Inn & Suites I-80 Block](#)
- ASCE Symposium Rates: \$119 per night, 15-QQ and 15-K Suite (includes breakfast, Wi-Fi, pool, fitness center, and parking)

Country Inn & Suites

- Address: 5353 N 27th St, Lincoln, NE 68521
- Reservation Link: [Country Inn & Suites Hotel Block](#)
- ASCE Symposium Rates: \$144 Thursday, \$124 per night Friday and Saturday, 20-QQ and 5-K (includes breakfast, Wi-Fi, pool, fitness center, and parking)

Hampton Inn Lincoln South – Heritage Park

- Address: 5922 Vandervoort Drive, Lincoln, NE 68516
- Reservation Link: [Hampton Inn Lincoln South Hotel Block](#)
- ASCE Symposium Rates: \$159 per night, 15-QQ and 5-K (includes breakfast, Wi-Fi, pool, fitness center, and parking)

Thank you to our sponsors!

2025 ASCE MID-AMERICA STUDENT SYMPOSIUM!
BROUGHT TO YOU BY OUR
Sponsors



benesch



JEO CONSULTING GROUP



**KIRKHAM
MICHAEL**



olsson



Alberici



E & A CONSULTING GROUP, INC.



NUCOR

valmont



GBA

ASCE

REGION 7

ASCE

NEBRASKA SECTION

