

Mailer 3 - Final Symposium Information
2025 ASCE Rocky Mountain Student Symposium
Hosted by Colorado State University
April 10 – April 12, 2025



March 22, 2025

Dear ASCE Student Chapter of the ASCE Rocky Mountain Student Conference:

This is your **2025 ASCE Rocky Mountain Student Symposium** Mailer 3, the last of three informational packets to be sent to each of the participating ASCE Student Chapters in our Student Conference. Please carefully read this information and forward copies to the appropriate members in your ASCE Student Chapter and team members for each team competing at the student symposium. Do not delete this mailer as information given within may not be repeated in subsequent mailers.

Please carefully read this information and forward copies to the appropriate members in your ASCE Student Chapter and team members for each team competing at the student symposium. Do not delete this mailer as information given within may not be repeated in subsequent mailers. Enclosed you will find the following information:

- ◆ Mailer 3 Confirmation and registration reminders,
- ◆ Safety-first culture information,
- ◆ Competition safety information,
- ◆ Business Meeting information,
- ◆ Maps, directions, and parking information,
- ◆ Non-competition event information,
- ◆ Competition presentation and display information,
- ◆ Technical Paper Prompt & Guidelines
- ◆ Social network information,
- ◆ Final student symposium schedule,
- ◆ Final presentation schedules,
- ◆ Final deadlines,
- ◆ Society and local competition information,
- ◆ ASCE Pop-Up Leadership Workshop information,
- ◆ Student Symposium Paper Competition information,
- ◆ ASCE Society Competition eligibility requirements,
- ◆ Sponsor recognition,
- ◆ Hotel information,
- ◆ Appendix A: Scoring for the Paper Competitions, and
- ◆ ASCE Civil Engineering Student Championships T-Shirt collection request.

Receipt of this mailer should be confirmed by completing the Mailer 3 Acknowledgment Form by March 26, 2025.
Please note the late individual registration deadline is March 27, 2025.

If you have any questions, feel free to contact us at our general student symposium e-mail address, listed below. All symposium information such as events, mailers, policies, rules, etc. will be posted on our website and are also listed below. We look forward to your participation in the 2025 ASCE Rocky Mountain Student Symposium and providing an opportunity to engage with other student chapters and ASCE Region Leadership.

Sincerely,
Patrick Swallow
President, ASCE Student Chapter
Colorado State University

Madisyn Bietz
Chair, 2025 ASCE Rocky Mountain Student Symposium
Colorado State University

ASCE Student Symposium website	https://studentsymposium.asce.org/rocky-mountain/
General symposium email address	ASCE_Symposium@colostate.edu
Facebook	https://www.facebook.com/CSUCivilAndEnvironmentalEngineering
Instagram	https://www.instagram.com/csu_cee/

Registration Reminders – ALL Participants

STEP 1 - Mailer 3 Receipt Confirmation – *required*

Follow the link below to complete the Mailer 3 Receipt Confirmation due no later than March 26, 2025.

Mailer 3 Receipt Confirmation: <https://forms.office.com/r/DVWeQtcWMR>

STEP 2 - Individual Registration Form – *required*

The Individual Registration Form is due before March 27, 2025. Please note that you may not receive a T-shirt if you have registered after March 17th.

Please visit our symposium website at [Individual Registration - Rocky Mountain](#) to register for the 2025 ASCE Rocky Mountain Student Symposium.

The Individual Registration Form must be filled out by ***ALL individuals*** attending the symposium including chapter members, team competitors, chapter spectators, guest teams, faculty advisors, volunteers, judges, and ASCE Region Leadership. The Individual Registration Form contains liability waiver information required by ASCE that must be reviewed and acknowledged by every individual attending, participating, and/or spectating at the symposium.

STEP 3 - Individual Registration Payment – *required*

Individual Registration is \$100 per person. The registration payment is due by March 27, 2025.

Pay online under “Guest Registration” at <https://engr-colostate.nbsstore.net/>

Payment by check:

Please make check payable to Colorado State University

Please mail check to:

Colorado State University

ASCE c/o Engineering Business Office

1301 Campus Delivery

Fort Collins, CO 80523-1301

Include on Check Memo:

ACC: 1313246-ASCE

IF YOUR CHAPTER WILL NOT BE PARTICIPATING IN THE 2025 ASCE ROCKY MOUNTAIN STUDENT SYMPOSIUM, PLEASE EMAIL ASCE_SYMPOSIUM@COLOSTATE.EDU AS SOON AS POSSIBLE.

Safety-First Culture Information

ASCE and Colorado State University are encouraging a Safety-First Culture during the student symposium. We encourage all symposium participants to embrace this concept by thinking about safety in their activities coming to, returning from, and while at our symposium. We want **every** symposium participant to return home safe and healthy.

To generate a Safety-First Culture, we have designated lead symposium safety officers, as listed below. Further, be on the lookout for safety information at the symposium, such as the location of first-aid supplies, who in the crowd have first-aid training and Safety Moments.

What is a Safety Moment? A Safety Moment consists of a quick discussion on an activity-specific, site-specific, or general safety topic. The Safety Moment may be presented by the leader of an activity, the symposium safety officer, or a member of the host symposium planning team. We ask that all participants give their undivided attention to the Safety Moment discussion and embrace the safety-first concept.

If an injury does occur during the symposium, it should be reported to the competition head judge, symposium safety officer, or activity leader immediately so that appropriate action can be taken based on the injury. If it is a true emergency, please call 911 first.

Contact information for the symposium safety officer and key host school representatives is listed below. Please keep this list close during the symposium and we encourage you to program the symposium safety officer's phone number into your cell phone.

Symposium Safety Officers

Lead: Todd Atadero: 970-690-7319
Scott Buck: 970-402-0216
Amber Camus: 970-214-0737
Matthew Szydlowski: 970-732-0781
Jeff Ellis: 970-402-0216

Host School Faculty Advisor

Nicole Ellison: 720-474-9643

As a best practice, we strongly recommend that faculty advisors keep and maintain on-hand a list of emergency contact information for their university and participating students. ASCE and the student symposium host do not collect emergency contact information from registrants.

In the spirit of a Safety Moment, here are some safe driving habits to keep in mind as you travel to the student symposium:

- Driving at the speed limit has proven to save lives.
- Do not drive when tired. Swap drivers often.
- Minimum of two people awake at all times when wheels are rolling.
- Be aware of how larger/heavier vehicles behave when stopping or turning.
- Be aware of your surroundings when backing up any vehicle, especially trailers. Better yet, avoid backing up at all, if possible.
- Use a spotter to watch when you must back up a vehicle.
- Slow down when the conditions warrant (rain, snow, darkness, pedestrians nearby).
- Perform a circle of safety around your vehicle to identify what is in your blind spots.

Competition Safety Information

Please see the competition rules for full details. If there is a discrepancy between the rules and the information listed below, the competition rules are to be followed.

ASCE Concrete Canoe Competition: Safety gear (closed-toe water shoes and Personal Floatation Device (life jacket) for each paddler is the responsibility of each team. ([Exhibit 9: Race Regulations & Safety](#))

AISC ASCE Student Steel Bridge Competition: Personal protective equipment is the responsibility of each team. During all construction activities, builders must wear hard hats and protective eyewear or safety goggles ([Section 10.1.6](#)). During all loading activities, competitors must wear hard hats, protective eyewear or safety goggles, work gloves, and steel toe or composite work boots that extend above the ankle ([Section 11.2.1.3](#)). The hard hats must meet ANSI standard Z89.1, and the protective eyewear or safety goggles must meet ANSI standard Z87.1.

Surveying Competition: Team members are responsible for providing their own required safety equipment including closed-toe shoes and safety-colored shirts or vests to participate in the field tasks. ([Section 6: Safety](#))

Timber-Strong Design Build Competition: [Section 5.4.3 Safety Gear](#) – Each team is responsible for bringing their own tools, safety gear, and personal protective equipment (PPE) including but not limited to construction hard hats, safety glasses, gloves (tips of gloves may not be cut off), closed-toed shoes, long pants, and safety vests or high-visibility shirts. Long hair needs to be tied back at the construction site. Please see [Section 5.4.3 Safety Gear](#) for information on power tools.

Business Meeting (Eligibility Requirement)

The Business Meeting is scheduled to take place at 5:00 pm on April 11, 2025.

The business meeting agenda is attached to the Mailer 3 distribution email. If you have additional agenda items and/or motions that your student chapter would like to be included in the agenda, please submit them to Nicole Ellison at ASCE_Symposium@colostate.edu by April 1, 2025.

Note that the business meeting is officially the business meeting for the Student Conference Board of Delegates. The Board of Delegates consists of two student delegates (preferably a senior or junior in an ASCE leadership position and a sophomore in or aspiring to an ASCE leadership position) and the faculty advisor from each student chapter. Each student delegate must be a member in good standing with their student chapter and the Society. Each student chapter in the Student Conference has one vote.

At least one member of your ASCE student chapter must participate in the Business Meeting as part of the eligibility requirements to advance to finals for Concrete Canoe, Steel Bridge, Sustainable Solutions, and Surveying.

[Click here for ASCE Eligibility Requirements](#)

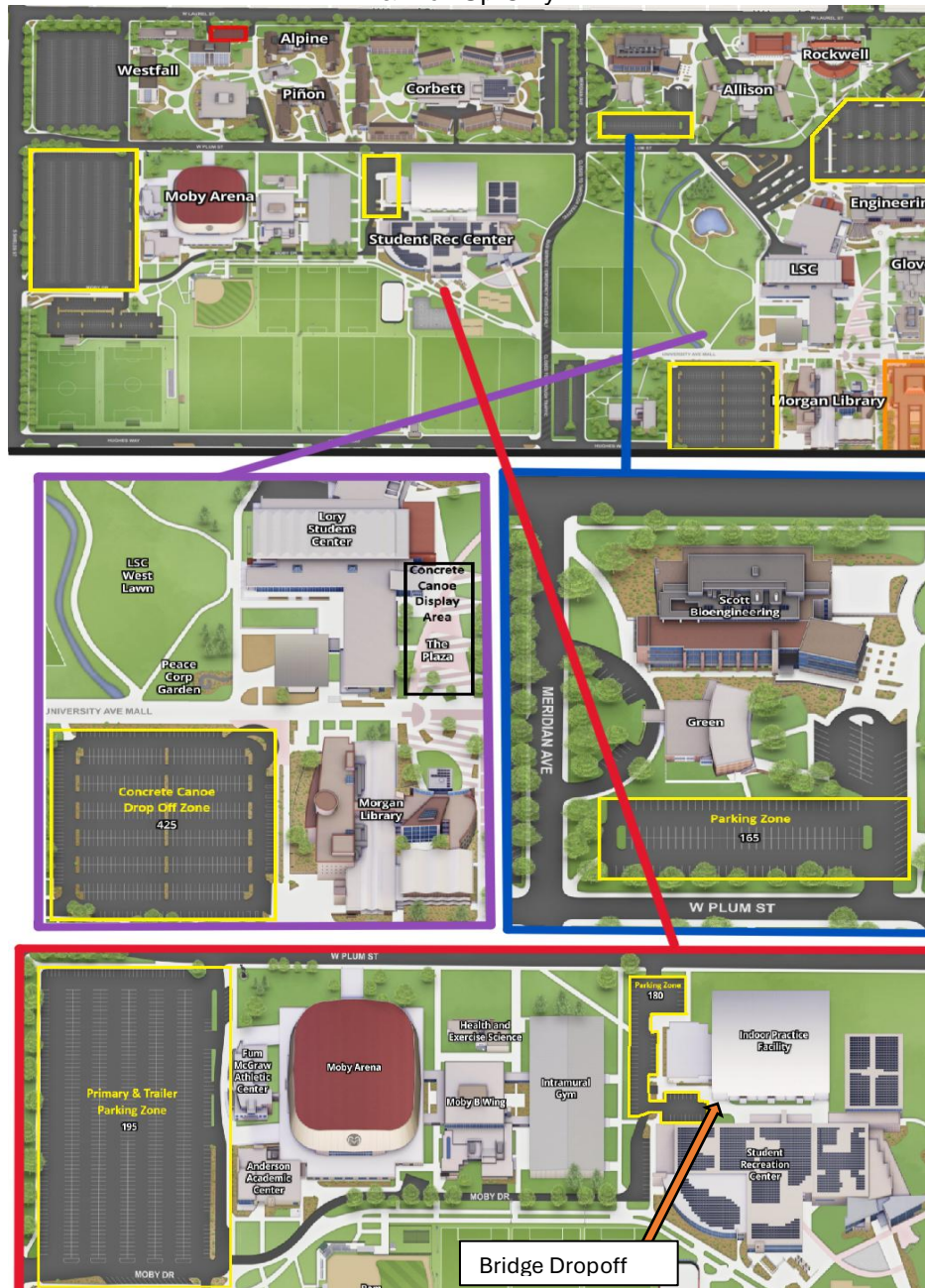
Maps, Directions, and Parking Information

Colorado State University Campus

Lory Student Center (LSC): 1101 Center Ave Mall, Fort Collins, CO 80521

The CSU ASCE chapter will be covering parking costs (and there will be volunteers or event signage present) in the **Moby Arena parking lot** (951 W Plum St, Fort Collins, CO 80521). Please try to carpool and park in Moby Arena. **ALL TRAILERS MUST PARK IN THE MOBY ARENA LOT.**

All other parking zones (denoted by yellow outlines) are metered between 7:00am and 4:00pm and should be used for Drop Off & Pick Up Only.



Maps, Directions, and Parking Information, cont.

Concrete Canoe Race Venue: Horsetooth Reservoir
4200 W County Rd 38 E, Fort Collins, CO 80526

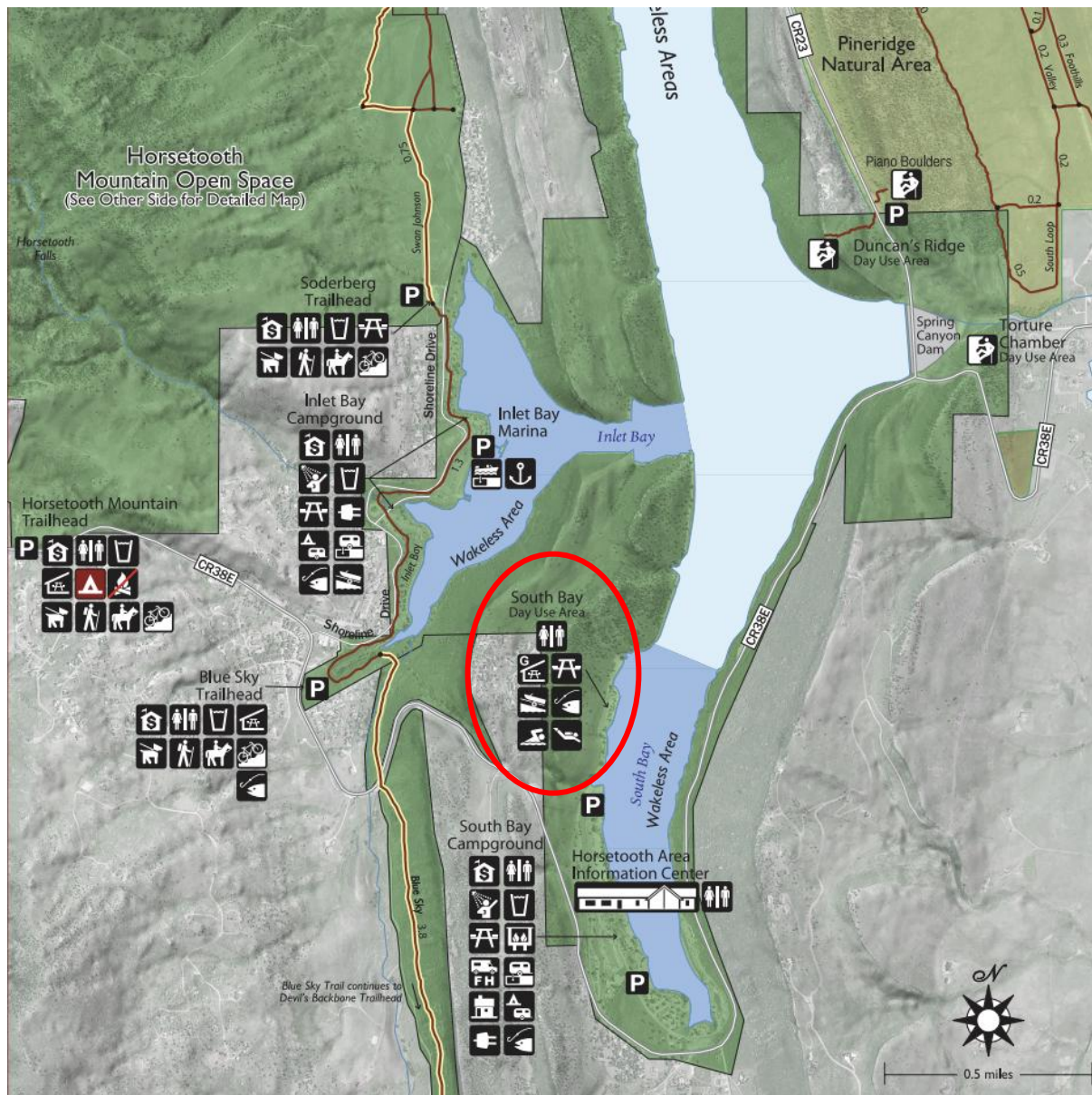
The CSU ASCE student chapter is covering the parking costs at Horsetooth Reservoir. There will be volunteers or event signage present in the parking area. Please try to carpool as much as possible, since it is costly and there may be limited parking. Thank you for your cooperation!

<https://www.larimer.gov/naturalresources/parks/horsetooth-reservoir>



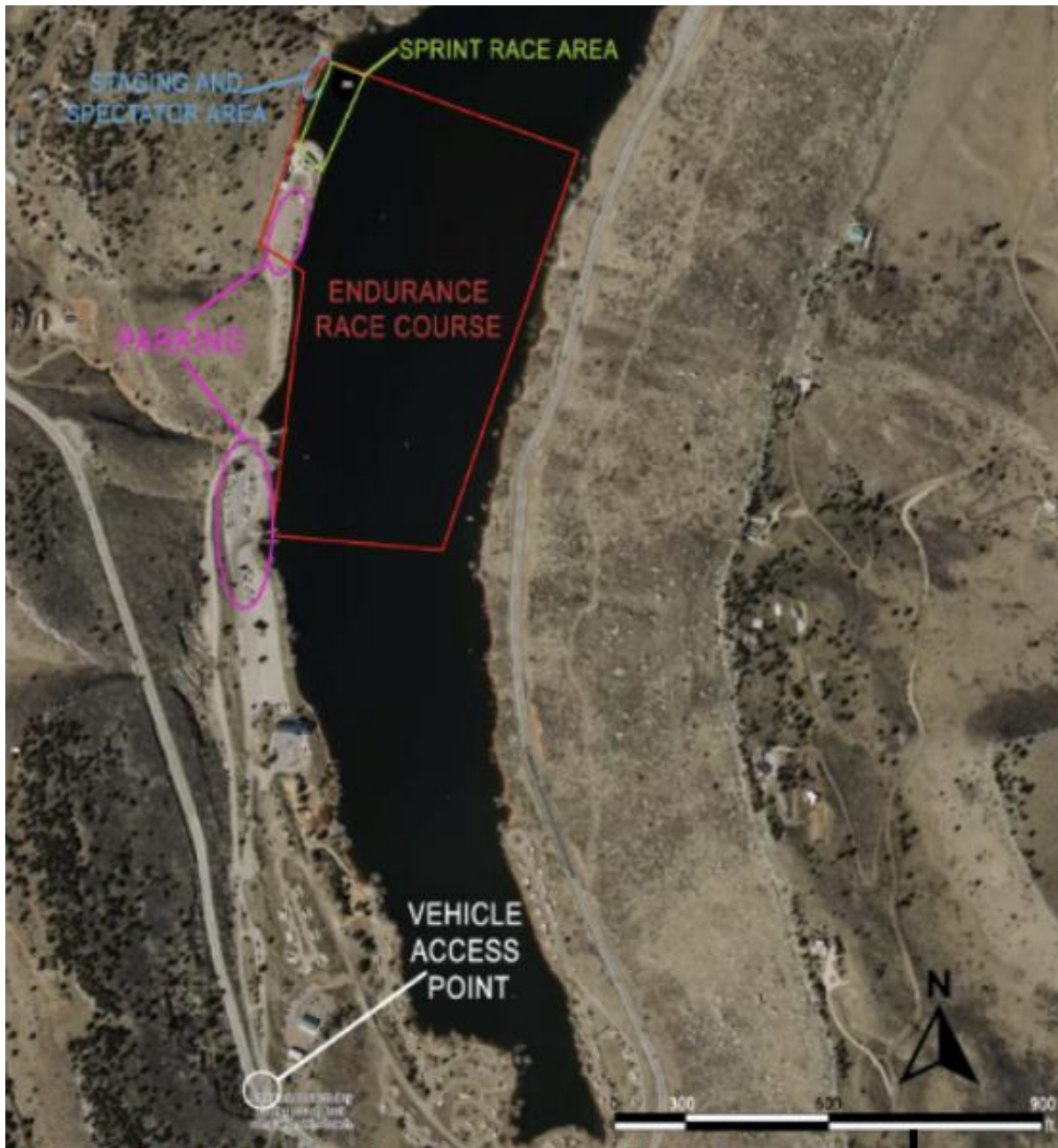
Maps, Directions, and Parking Information, cont.

Concrete Canoe Race Venue: Horsetooth Reservoir
4200 W County Rd 38 E, Fort Collins, CO 80526



Maps, Directions, and Parking Information, cont.

Concrete Canoe Race Venue: Horsetooth Reservoir
4200 W County Rd 38 E, Fort Collins, CO 80526



Maps, Directions, and Parking Information, cont.

Concrete Canoe Race Venue: Horsetooth Reservoir
4200 W County Rd 38 E, Fort Collins, CO 80526



Non-Competition Event Information

Registration and Check-in: Thursday, April 10th from 4:00pm-6:00pm in the Scott Bioengineering Building Atrium.

Thursday Welcome Events: Dinner will be provided on Thursday, April 10th at 6:00 p.m. in the Scott Bioengineering Building Atrium following check-in. Students will then join forces across schools for a friendly competition in an engineering project hosted by Kiewit Corp.

Career and Networking Event: Friday, April 11th at 9:00 a.m. in the Lory Student Center Ballroom. Students can connect with area engineering firms and other sponsors for career and internship opportunities (plus grab some sponsor swag!). Be sure to also stop by the ASCE table to learn more about the organization.

Business Meeting: April 11th, 2025, at 5:00 pm. By invitation only, see attached Business Meeting Agenda.

ASCE Pop-Up Leadership Workshops: April 11, 2025, in the Lory Student Center Room 312. Please refer to the “ASCE Pop-Up Leadership Workshops” section below for more information. There are 3 Pop-Up Leadership Workshops:

- ◆ Leadership Workshop #1, 9am–10am: The FE Exam and the Path to the PE
- ◆ Leadership Workshop #2, 11am–12pm: What Would You Do? Ethics & Professional Conduct
- ◆ Leadership Workshop #3, 2pm–3pm: What is your Personality Type? Understanding Each Other

Awards Banquet Brunch: Saturday, April 12 from 9:00am–12:00pm in the Lory Student Center Ballroom (**business casual dress code**). Join us for a delicious brunch buffet as we celebrate the dedication and innovation of our students and teams! Cheer on your school and peers while enjoying a morning of recognition and inspiration. Along with individual and team awards, we'll honor CSU Professor Neil Grigg as he is inducted as an ASCE Distinguished Member. Plus, don't miss a welcoming address and a special appearance by ASCE President Feniosky Peña-Mora at the Awards Banquet!

Competition Presentation & Display Information

All Competitions: Each student team that presents is required to bring their digital presentation on a USB. The host will provide projector equipment and free “CSU Guest” WiFi.

Please see the competition rules for full details. If there is a discrepancy between the rules and the information listed below, the competition rules are to be followed.

ASCE Concrete Canoe Competition: Teams are responsible for providing all necessary materials for the display portion of the competition. ([Section 7: Prototype Display Requirements](#)). Teams should bring presentations on a thumb drive for the technical presentation ([Section 8: Technical Presentation](#)).

AISC ASCE Student Steel Bridge Competition: Teams are responsible for providing all necessary materials for the aesthetic display portion of the competition. ([Section 6.2.1](#))

Surveying Competition:

Topographic Map Display: It is the responsibility of each team to bring one (1) 24-inch by 36-inch paper copy set of the topographic mapping project to the symposium, which will be used for public display at the student symposium ([Section 7.3, Paper Copy Submittals](#)). The paper copy set shall be submitted to the student symposium host at check-in.

(This copy is for the public display and does not replace the required online submission due on February 24, 2025, by 5:00 pm EST.)

- ◆ Teams are encouraged to bring a standard 6ft tablecloth displaying your school's name, logo, or chapter name (*not required*).
- ◆ Teams should plan to stay with their topo map public display to discuss their project with spectators.

Field Task Equipment: Please refer to [Appendix D, Equipment List](#), for a full list of required items for the competition. All items must be supplied by each individual team at the symposium competition.

Sustainable Solutions:

Poster Session: Teams will be responsible for providing their own easel for the poster presentation. You can find standard 63” poster board easels online. Easel [example](#).

The **Sustainability Committee of the American Society of Civil Engineers Colorado Section** is committed to advancing sustainability and resilience in infrastructure with its members, consultants, owners, and government. It is pleased to announce prizes for the 1st, 2nd, and 3rd place winners of the Sustainable Solutions Competition.

The prizes for each team will be as follows:

1st Place: \$600

2nd Place: \$300

3rd Place: \$100

The prize money will be distributed evenly amongst each student member of the winning team and presented at the Awards Ceremony Saturday, April 12.

ASCE Construction Institute Competition: All teams should come prepared with a laptop. Laptops or computers will not be provided at the competition. One per team is sufficient, but it is recommended that each participating student brings a laptop.

Timber-Strong Design Build Competition: Teams will be responsible for providing their own easel for the visual aid at the build site, as outlined in [Section 9.2 of the rules](#). You can find standard 63” poster board easels online. Easel [Example](#).

Student Symposium Non-Technical & Technical Paper Competitions: See above in red.

Regional Competition Rules: Technical Paper

Technical paper:

Submission deadline: **March 31, 2025**;
Submission email/link: ASCE_Symposium@colostate.edu

In email subject line please include: SCHOOLNAME Technical (i.e. **CSU Technical**)

The technical paper competition and presentation are regional competitions and are not an ASCE eligibility requirement to advance to finals. The Student Symposium (Non-Technical) Paper Competition is an ASCE eligibility requirement to advance to finals. Please see page 24 for details on the Student Symposium Paper Competition.

The topic for this technical paper is:

Select any aspect of civil engineering and explain how it can be more sustainable overall. Explore strategies such as the use of renewable materials, energy-efficient building designs, waste reduction, and the incorporation of environmental and social considerations into project planning.

This competition can be performed by a single individual or a team of no more than two students. Each chapter is eligible to submit a single technical paper. The technical paper is accompanied by a technical presentation that will be presented at the symposium.

Paper Guidelines:

- ◆ Limited to 1 paper from each student organization
- ◆ Not to exceed 1500 words in length
- ◆ Can be written by an individual or a team of no more than 2 members

Presentation Guidelines:

- ◆ Each team will have up to 15 minutes to present their paper
- ◆ Can be presented by an individual or a team of no more than 2 members

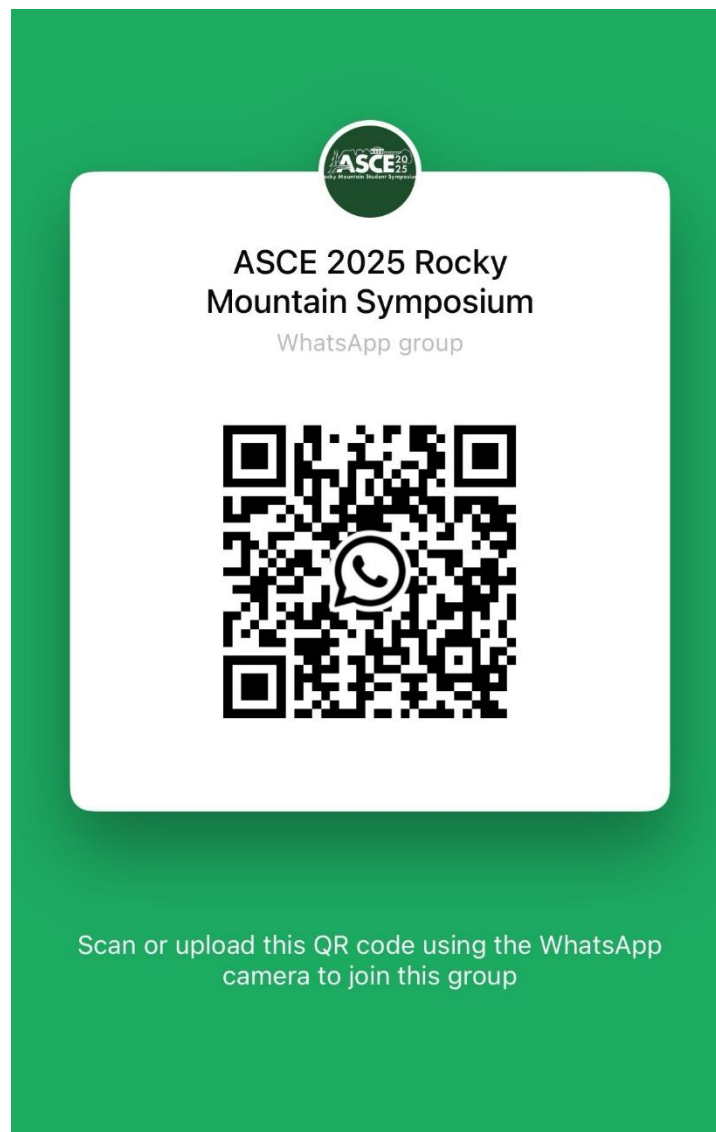
The scoring sheet template for this paper is included in Appendix A (it is the same for both the non-technical Mead paper and the technical paper).

Social Network Information

WhatsApp will be the main form of communication between schools before, during, and after the symposium.

The app can be accessed by scanning the provided QR code or following the link below.

[WhatsApp Link](#)



Final Student Symposium Schedule

Drug and Alcohol-Free Events

The use of drugs and alcohol is prohibited at all ASCE Student Symposium events.

THURSDAY, APRIL 10, 2025

TIME	THURSDAY-APRIL 10TH	
	Indoor Practice Field	Scott Bioengineering Atrium
7:00am		
7:30am		
8:00am		
8:30am		
9:00am		
9:30am		
10:00am		
10:30am		
11:00am		
11:30am		
12:00pm		
12:30pm		
1:00pm		
1:30pm		
2:00pm		
2:30pm		
3:00pm		
3:30pm		
4:00pm	Bridge Drop Off 4:00-8:30	Check-In Scott Atrium 4:00-6:00 pm
4:30pm		Mystery Design Dinner Scott Atrium; Scott 229; Scott 231; 6:00-8:30
5:00pm		
5:30pm		
6:00pm		
6:30pm		
7:00pm		
7:30pm		
8:00pm		
8:30pm		

Evening:

- 4:00pm-6:00pm: Symposium Check-In
- 4:00pm-8:30pm: Bridge Drop-off
- 6:00pm-8:30pm: Dinner followed by Mystery Design

Final Student Symposium Schedule, cont.

FRIDAY, APRIL 11, 2025

TIME	FRIDAY - APRIL 11TH									
	LSC 322	LSC Ballroom B, C, D		LSC Ballroom A	LSC 312	LSC 308-310	LSC 304-306	LSC West Lawn	LSC Plaza	Indoor Practice Facility
7:00am										
7:30am										
8:00am		Check-In 8:00am-9:00am		Judges Meeting 8:00am-9:00am					Canoe Drop-Off 7:00am-9:00am	Bridge Drop-Off 7:00am-8:30am
8:30am										Bridge Aesthetics Set-up 8:30am-9:30am
9:00am										Bridge Judges Meeting 8:00-9:00
9:30am										Bridge Captain Meeting
10:00am										Bridge Aesthetics Judging 9:30am-10:30am
10:30am										
11:00am										
11:30am										
12:00pm										
12:30pm										
1:00pm										
1:30pm										
2:00pm										
2:30pm										
3:00pm										
3:30pm										
4:00pm										
4:30pm										
5:00pm										
5:30pm										
6:00pm										
6:30pm										
7:00pm										
7:30pm										
8:00pm										
8:30pm										

Morning:

- 7:00am-8:30am: Bridge Drop-Off
- 7:00am-9:00am: Canoe Drop-Off
- 8:00am-9:00am: Check-in (if you did not check in Thursday)
- 8:00am-9:00am: Judges Meeting
- 8:30am-9:30am: Bridge Aesthetics Set-Up
- 9:00am: Bridge Captain Meeting
- 9:00am-10:00am: Leadership Workshop 1
- 9:00am-10:30am: Technical Paper Presentations
- 9:00am-11:00am: Survey Topo Map Display
- 9:00am-11:30am: Sustainable Solutions Poster Voting
- 9:00am-3:00pm: Sponsorship & ASCE Booths
- 9:30am: Timber-Strong Captain Meeting
- 9:30am-10:30am: Bridge Aesthetics Judging
- 10:00am-12:30pm: Canoe Display
- 10:30am-2:30pm: Timber-Strong Design Build
- 11:00am: Survey Captain Meeting
- 11:00am-12:00pm: Leadership Workshop 2
- 11:00am-5:00pm: Steel Bridge Construction
- 11:30am-1:00pm: Survey Presentations
- 11:30am-2:30pm: Lunch Buffet & Boxed Lunches

Afternoon:

- 1:00pm-3:00pm: Non-Technical Paper Presentations
- 1:00pm-5:30pm: Construction Institute Competition
- 2:00pm-3:00pm: Leadership Workshop 3
- 2:30pm-3:30pm: Canoe Captain Meeting
- 2:30pm-6:00pm: Survey Competition
- 3:00pm: Sustainable Solutions Captain Meeting
- 3:30pm-5:00pm: Sustainable Solutions Presentations
- 3:30pm-5:30pm: Canoe Presentations
- 5:00pm-6:00pm: Business Meeting

Final Student Symposium Schedule, cont.

SATURDAY, APRIL 12, 2025

TIME	SATURDAY - APRIL 12TH		
	LSC 322	LSC Main Ballroom	Horsetooth Reservoir
7:00am			
7:30am			
8:00am	Bag and Coat Check Room Open		
8:30am			
9:00am		Awards Banquet Brunch 9:00am-12:00pm	
9:30am			
10:00am			
10:30am			
11:00am			
11:30am			
12:00pm			Canoe Drop-Off 12:00pm-1:00pm
12:30pm			Canoe Swamp Testing 1:00pm-2:00pm
1:00pm			
1:30pm			
2:00pm			Canoe Races 2:00pm-6:30pm
2:30pm			
3:00pm			
3:30pm			
4:00pm			
4:30pm			
5:00pm			Sun sets at 7:37pm
5:30pm			
6:00pm			
6:30pm			
7:00pm			
7:30pm			
8:00pm			
8:30pm			

- Morning:
- 9:00am-12:00pm: Awards Banquet Brunch
- Afternoon:
- 12:00pm-1:00pm: Canoe Drop Off
 - 1:00pm-2:00pm: Canoe Swamp Testing
 - 2:00pm-6:30pm: Canoe Races

Final Student Symposium Schedule, cont.

PRESENTATIONS AND COMPETITIONS

Concrete Canoe Presentations	
LSC Room 304-306	3:30pm - 5:30pm
1 minute set up; 5 minute presentation; 7 minute question/answer; 2 minute clean up	
School	Time
Colorado School of Mines	3:30pm - 3:45pm
Colorado State University	3:45pm - 4:00pm
South Dakota School of Mines	4:00pm - 4:15pm
US Air Force Academy	4:15pm - 4:30pm
University of Wyoming	4:30pm - 4:45pm
University of Colorado-Boulder	4:45pm - 5:00pm

Timber Strong Design Build	
Indoor Practice Field	10:30am - 2:30pm
Staging - 30 minutes; Construction - 90 minutes; Judging - 60 minutes; Team Feedback & Disassembly - 90 minutes	
School	
Colorado School of Mines	
South Dakota School of Mines	
University of Wyoming	
University of Colorado-Boulder	

Survey Competition Presentation	
LSC Ballroom A	11:30am - 1:00pm
1 minute set up; 5 minute presentation; 7 minute question/answer; 2 minute clean up	
School	Time
University of Colorado-Boulder	TBD
University of Wyoming	TBD
South Dakota School of Mines	TBD
Colorado School of Mines	TBD

Non-Technical (Meade) Paper Presentation	
LSC Ballroom A	1:00pm - 3:00pm
School	Time
University of Colorado-Boulder	1:30pm - 1:45pm
University of Wyoming	1:45pm - 2:00pm
US Air Force Academy	2:00pm - 2:15pm
South Dakota School of Mines	2:15pm - 2:30pm
Judges Break	2:30pm - 2:45pm
Colorado State University	2:45pm - 3:00pm
Colorado School of Mines	3:00pm - 3:15pm
Team 7	3:15pm - 3:30pm

Construction Institute Competition	
LSC Room 308-310	1:00pm - 5:30pm
Announcements - 15 minutes; Link to Project and Challenge - 2.5 hours; Responses turned in and Judges select order Presentations - 1 hour	
School	Time
Colorado School of Mines	TBD
South Dakota School of Mines	TBD
University of Colorado-Boulder	TBD

Steel Bridge Construction Order	
Indoor Practice Field	11:00am - 5:00pm
School	Time
University of Wyoming	TBD
US Air Force Academy	TBD
South Dakota School of Mines	TBD
Colorado State University	TBD
Colorado School of Mines	TBD
Colorado Mesa University	TBD

Sustainable Solutions Paper Presentation	
LSC Ballroom A	3:30pm - 5:00pm
15-minute presentation followed by question/answer	
School	Time
Colorado School of Mines	3:45pm - 4:00pm
South Dakota School of Mines	4:15pm - 4:30pm
University of Colorado-Boulder	4:45pm - 5:00pm

Final Deadlines

We highly recommend that you share this information with your chapter, including any competition captains.

March 7, 2025	Timber-Strong Design Build Phase Three Project deliverables are due. <i>(Unique and secure link to be provided to each team from ASCE)</i>
March 22, 2025	Mailer 3 (final) sent to each student chapter.
April 2, 2025	Timber-Strong Design Build - All Change Orders and final submittals are to be uploaded to ASCE's Cerberus ftp server. <i>(Unique and secure link to be provided to each team from ASCE)</i>
March 20, 2025	Sustainable Solutions Competition Technical Design Proposal, Envision Checklist and Criteria Justification, Public Outreach Poster, and Sketchup files are due. <i>(Unique and secure link to be provided to each team from ASCE)</i>
March 26, 2025	Mailer III Receipt Confirmation due from each student chapter.
March 31, 2025	Final Date for Late Registrations.
April 4, 2025	Hotel Reservations Cut-off.
April 10 – April 12, 2025	2025 ASCE Rocky Mountain Student Symposium.

Society Competition Information

SOCIETY COMPETITIONS AT THE 2025 ASCE ROCKY MOUNTAIN STUDENT SYMPOSIUM

Society-wide Competitions

ASCE Sustainable
Solutions Competition



ASCE UESI Surveying
Competition



AISC/ASCE Student
Steel Bridge
Competition



ASCE Concrete Canoe
Competition



Society Pilot Competitions

ASCE Construction
Institute Competition



ASCE Timber-Strong
Design-Build
Competition



Society competition rules can be found at:
<https://www.asce.org/communities/student-members/conferences/rules>



Local Competition Information

LOCAL COMPETITIONS AT THE 2025 ASCE ROCKY MOUNTAIN STUDENT SYMPOSIUM

<p>Student Symposium Paper Competition</p> <p><i>Participation is a requirement for advancement to Society-wide competition finals and SSBC National Finals.</i></p>	<p>Mystery Design</p> <p><i>Thursday, April 10th at 6:00 pm in the Scott Bioengineering Atrium.</i></p>	<p>Technical Paper Competition & Presentation</p> <p><i>The presentation is Friday, April 11th from 9:00 am to 10:30 am in the Lory Student Center (LSC) Ballroom A.</i></p>
---	---	--

ASCE Pop-Up Leadership Workshops

Don't miss the opportunity to learn about professional skills you can use now and after graduation to help you get ahead. Pop-Up Leadership Workshops are presented by the Committee on Student Members and other Region leaders and will be held throughout the Symposia.



2025 ASCE Pop-Up Leadership Topics

1. *The FE Exam and the Path to the PE*
 - Friday, April 11th, 9:00am-10:00am in LSC Room 312
2. *What Would You Do? Ethics & Professional Conduct*
 - Friday, April 11th, 11:00am-12:00pm in LSC Room 312
3. *What is Your Personality Type? Understanding Each Other*
 - Friday, April 11th, 2:00pm-3:00pm in LSC Room 312

Student Symposium Paper Competition

The ASCE Student Symposium Paper Competition emphasizes the importance of being able to write and present a paper as essential communication skills for all engineers and often necessary for advancement in your career. The competition consists of a paper submission and a presentation at the student symposium.

The topic for the 2025 ASCE Rocky Mountain Student Symposium Paper Competition is: **Infrastructure Disasters**

Submission deadline was March 3, 2025

Submission email is: ASCE_Symposium@colostate.edu

This topic is the same topic as the [Daniel W. Mead Prize for Students](#). However, the Student Symposium Paper Competition and the Daniel W. Mead Prize for Students are two separate competitions and must be submitted separately. The Student Symposium Paper Competition paper is due March 3, 2025 and submitted to Nicole Ellison and/or Pinar Omur-Ozbek at ASCE_Symposium@colostate.edu. The [Daniel W. Mead Prize for Students](#) is due March 1st and submitted to student@asce.org.

*****SOCIETY-WIDE FINALS ELIGIBILITY REQUIREMENT*****

Both the paper submission and the presentation are mandatory for any ASCE Student Chapter participating in the 2025 ASCE Rocky Mountain Student Symposium that wishes to be eligible to advance to ASCE Society-wide competition finals and SSBC National Finals. Competitions requiring participation include:

- ◆ ASCE Concrete Canoe Competition
- ◆ ASCE Sustainable Solutions Competition
- ◆ ASCE UESI Surveying Competition, and
- ◆ AISC/ASCE Student Steel Bridge Competition.

Note: Any papers/presentations created for any other competition do not count as an entry into the Student Symposium Paper Competition.

ASCE Society Competition Eligibility Requirements

Competitions that advance to an ASCE Society-wide Competition Finals include the ASCE Concrete Canoe Competition, ASCE Sustainable Solutions Competition, and ASCE UESI Surveying Competition. The AISC/ASCE Student Steel Bridge Competition advances to the SSBC National Finals and follows the eligibility requirements below. See [SSBC Rules](#) for more information.

The purpose of student competitions is to provide student members career-enrichment opportunities to gain hands-on, practical experience and leadership skills. Society Competitions are an important and special opportunity to showcase the engineering and professional skills of student teams. As such, mutual respect is required for all stakeholders, including competitors, judges, hosts, and guests. Invitations to the Student Symposia and the ASCE Student Civil Engineering Championships/Society-wide Competition Finals are a privilege, not a right. Failure to act professionally can result in sanctions, disqualifications, and loss of invitations. Please note that the requirements for eligibility for Society-wide competition finals are more stringent than the requirements for participation at the student symposia competitions.

ELIGIBILITY FOR STUDENT SYMPOSIUM COMPETITION

The following qualifications are required of all ASCE Student Chapters to compete at the Student Symposia Competitions. An ASCE Student Chapter must:

1. Be in good standing with ASCE:
 - a. Have paid their annual dues, as received by ASCE, **no later than the start of their Student Symposium.**
 - b. Have submitted their student chapter's full Annual Report or EZ Annual Reporting Form **no later than February 1, 11:59 p.m. EST.**

ELIGIBILITY FOR ASCE SOCIETY-WIDE COMPETITION FINALS

The following qualifications are required of all ASCE Student Chapters to advance to the ASCE Society-wide Competition Finals. An ASCE Student Chapter must:

1. Be in good standing with ASCE:
 - a. Have paid their annual dues, as received by ASCE, no later than February 1, 11:59 p.m. EST.
 - b. Have submitted their student chapter's **full Annual Report**, **no later than February 1, 11:59 p.m. EST**, **and have received a minimum score of 25 points out of a possible 100.** **Student Chapters that submit an EZ annual reporting form do not qualify** to advance to competition finals; and
2. Attend and participate in their assigned Student Symposium as shown through their school's:
 - a. On-time attendance and active participation by a member of the ASCE Student Chapter at the Student Symposium Business Meeting.
 - b. Participation in the Student Symposium Paper Competition, including submission and presentation by a member of the ASCE Student Chapter. Note that any papers/presentations created for any other competition do not count as an entry into the Student Symposium Paper Competition.

Questions regarding eligibility should be directed to student@asce.org.

Thank you to our sponsors!



Nathan Alburn

SUNNY CIVIL

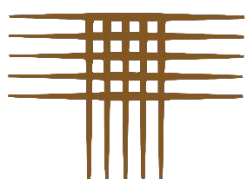


Tensar®

A Division of CMC

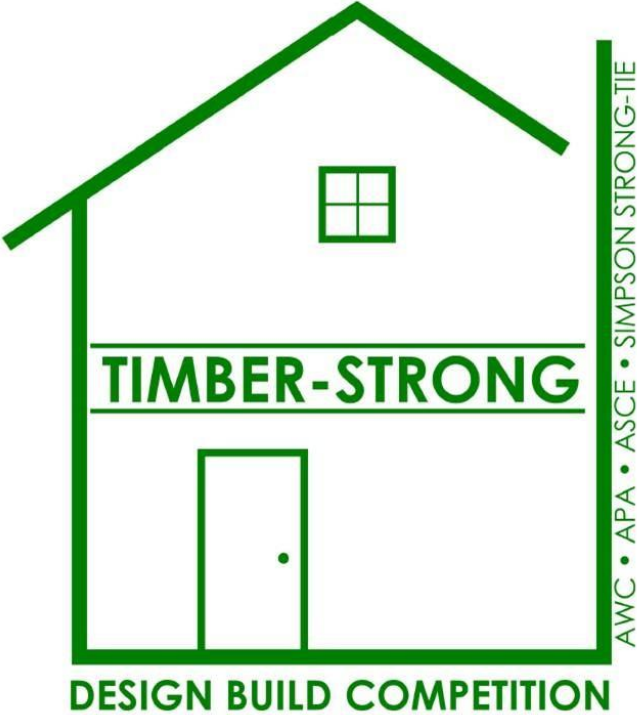


CivilWorx



CTL | THOMPSON

Mailer 3 - Final Symposium Information
 2025 ASCE Rocky Mountain Student Symposium
 Hosted by Colorado State University
 April 10 – April 12, 2025



Hotel Information

Please visit <https://www.visitftcollins.com/> to find accommodations for your chapter.

Suggested hotels near Colorado State University:

Best Western University Inn

914 South College Avenue
Fort Collins, CO 80524
Phone: (970) 484-2984
www.bwui.com

https://www.bestwestern.com/en_US/book/hotel-rooms.06040.html?groupId=Z23CI0K9

Hilton – Fort Collins

425 West Prospect Road
Fort Collins, CO 80524
(970) 482-2626
www.hilton.com/en/hotels/fnlcohf-hilton-fort-collins

The Armstrong Hotel

259 South College Avenue
Fort Collins, CO 80524
(970) 484-3883
<https://thearmstronghotel.com>

Appendix A – Non-Technical Paper Scoring

Please note that the technical paper competition will use similar scoring. However, the technical paper competition has a 1500-word limit, while the non-technical paper competition has a 2000-word limit.

Written Paper Scoring			
Total of 50 Points			
	Excellent	Competent	Needs Work
Adherence to Topic	Author was able to stay focused on the topic and did not stray from the main talking points/arguments. 10 - 9 Points	Author was able to stay mostly focused on the topic and only strayed from the main talking points/arguments a couple of times. 8 - 5 Points	Author was did not stay focused on the topic and it is not clear where the author's talking points/arguments are going. 4 - 1 Points
Presence of Original Ideas and Research Involved	Author presented and defended their position(s) on the topic, while demonstrating that they researched opposing views and were able to incorporate that into their reasoning. 10 - 9 Points	Author was able to present their position(s) on the topic, but ideas were not original or defended fully. They were able to demonstrate that they researched opposing views, but did not incorporate that into their reasoning. 8 - 5 Points	Author did not present their position(s) on the topic and their ideas were not original. No research on opposing views can be found or is easily discernible. 4 - 1 Points
Command of Subject Matter	Author demonstrates a depth of knowledge and understanding of the topic and is comprehensive and reasonable with their main talking points/arguments. 10 - 9 Points	Author demonstrates some knowledge and understanding of the topic, but ideas have not been fully discussed and their main talking points/arguments are lacking in discussion. 8 - 5 Points	Author does not demonstrates a depth of knowledge and understanding of the topic and does not any talking points/arguments. 4 - 1 Points
Spelling and Grammar / Length	Paper was at or under the maximum 2000 word limit. Minimal grammatical and spelling errors. 5 Points	Paper was at or under the maximum 2000 word limit. Several grammatical and spelling errors, but still readable. 4 - 3 Points	Paper was over the maximum 2000 word limit. Many grammatical and spelling errors that made it difficult to understand/read. 2 - 1 Points
Overall Clarity, Organization, Quality of Paper, and References	Paper was clear, concise, and easy to read. All discussions were logical in the order they were presented. Paper appears professional and consistent in formatting. References are from legitimate resources and organizations. Resources are properly cited. 15 - 12 Points	Paper was clear but not always concise or easy to read. Most discussions were logical in the order they were presented. Paper appears professional and consistent in formatting. References are from legitimate resources and organizations. Resources are properly cited. 11 - 8 Points	Paper was not clear, concise, or easy to read. Discussions were not logical in the order they were presented. Paper is not professional or consistent in formatting. References are not listed or from legitimate resources and organizations. Resources are not cited at all or properly. 7 - 1 Points

Appendix A – Non-Technical Paper Scoring, cont.

Oral Presentation Scoring			
Total of 50 Points			
	Excellent	Competent	Needs Work
Presentation Concepts and Theme	The Presenter is able to address and support the concepts and theme of the topic clearly and concisely to the audience. Audience is able to understand the discussion and topic. 10 - 9 Points	The Presenter is able to address and support the concepts and theme of the topic to the audience, with some <i>vaugness</i> . Audience is mostly able to understand and follow the discussion and topic. 8 - 5 Points	The Presenter is not able to address and support the concepts and theme of the topic to the audience. Audience is struggling to understand the discussion and topic. 4 - 1 Points
Ability to Communicate Key Concepts	The Presenter communicates the key concepts from their paper in a clear and concise manner that allows the audience to easily understand the importance of the topic and their arguments. 20 - 15 Points	The Presenter communicates some of the key concepts from their paper in a semi-clear manner. Audience can understand the importance of the topic and their arguments, but may have some issues piecing the argument together. 14 - 9 Points	The Presenter does not communicate the key concepts from their paper in a clear and concise manner and the audience has trouble understanding the importance of the topic and their arguments. 8 - 1 Points
Personal Bearing	The Presenter had great professionalism, energy, and showed excitement to present. Presenter made eye contact, projected their voice, and was poised. 5 - 4 Points	The Presenter was not very professional, energetic, or excited to present. Presenter made little to no eye contact, was difficult to hear, and was not poised. 3 - 1 Points	
Delivery Style	The Presenter was able to engage the audience. It appeared well practiced and did not appear that the presentation was memorized or that they were reading off the screen. Presenter used technical language correctly. 10 - 9 Points	The Presenter was able to partially engage the audience. It appeared mostly practiced, but also that the presentation was partially memorized or that they were reading off the scree. Presenter used technical language correctly most of the time. 8 - 5 Points	The Presenter was not to engage the audience. It appeared that the presentation was memorized or that they were reading off the screen. Presenter did not use technical language correctly. 4 - 1 Points
Time	Presentation was within the 5 minute time limit. Any overage time was permitted by the Judges. 5 - 3 Points	Presentation was either over the 5 minute time limit (by 2 or more minutes) or was significantly under the time limit. 2 - 1 Points	

Penalty		
Errors in Logic or Facts	Points can be deducted if there is an error in logic or facts. Up to 10 Points	

Appendix A – Non-Technical Paper Scoring, cont.

Student Chapter #01 - Author #01						
Category	Judge 1	Judge 2	Judge 3	Judge 4	Judge 5	JUDGE'S AVERAGE
Paper						
Adherence to Topic						
Presence of Original Ideas and Research Involved						
Command of Subject Matter						
Spelling and Grammar / Length						
Overall Clarity, Organization, Quality of Paper, and References						
Subtotal	0	0	0	0	0	0.0
Delivery Style						
Presentation Concepts and Theme						
Ability to Communicate Key Concepts						
Personal Bearing						
Delivery Style						
Time						
Subtotal	0	0	0	0	0	0.0
Penalty						
Errors in Logic or Facts						
Subtotal	0	0	0	0	0	0.0
Total Project Score						0.0

CESC T-shirt Collection Request

The 2025 ASCE Civil Engineering Student Championships are happening at California Polytechnic State University, San Luis Obispo, from June 27th to 29th, 2025. Cal Poly SLO wants to give a shout-out to all the hard work each team puts in to compete at the symposium level and their journey toward the Society-wide finals. For the 2025 ASCE student symposia, over 800 teams are competing in the 7 Society competitions at 22 student symposia!

While you are at the ASCE Rocky Mountain Student Symposium, Cal Poly SLO is asking every ASCE student chapter to bring an extra club/symposia/project team tee shirt (or more if you can!) to your student symposium. These shirts will be collected by the host school and sent to Cal Poly SLO, where they will be displayed for all the competing students, ASCE staff, judges, and committee members to check out.

You can drop off your team's shirt(s) at the **symposium check-in table from 4:00 p.m. – 6:00 p.m. on Thursday, April 10th in the Scott Bioengineering Atrium or at the check-in table from 8:00 a.m. – 9:00 a.m. on Friday, April 11th in the Lory Student Center Ballroom B,C,D.** Alternatively, you can get in touch directly with Cal Poly SLO's ASCE Civil Engineering Student Championships Host Chair, Nick Mackechnie, at nmackech@calpoly.edu.

The final display will be featured on the ASCE website this summer. Do not forget to follow Cal Poly SLO's Instagram page (@cesc2025) to keep up with the journey to the 2025 ASCE Civil Engineering Student Championships!

