

April 09 – April 11 / Rochester Institute of Technology

March 17, 2026

Dear ASCE Student Chapter of the ASCE Upstate New York-Canada Student Conference:

This is your **2026 ASCE Upstate New York-Canada Student Symposium** Mailer 3, the last of three informational packets to be sent to each of the participating ASCE Student Chapters in our Student Conference.

Please carefully read this information and forward copies to the appropriate members in your ASCE Student Chapter and team members for each team competing at the student symposium. Do not delete this mailer as information given within may not be repeated in subsequent mailers. Enclosed you will find the following information:

- Mailer 3 Confirmation and registration reminders,
- Safety-first culture information,
- Competition safety information,
- Business Meeting information,
- Maps, directions, and parking information,
- Non-competition event information,
- Competition presentation and display information,
- Social network information,
- Final student symposium schedule,
- Final presentation schedules,
- Final deadlines,
- Student Symposium Paper Competition information,
- ASCE Society Competition eligibility requirements,
- Sponsor recognition, and
- Hotel information.

*Receipt of this mailer should be confirmed by completing the Mailer 3 Acknowledgment Form by **March 31st, 2026**.
Please note the individual registration deadline was **February 18, 2026**.*

If you have any questions, feel free to contact us at our general student symposium e-mail address, listed below. All symposium information such as events, mailers, policies, rules, etc. will be posted on our website and are also listed below.

We look forward to your participation in the 2026 ASCE Upstate New York-Canada Student Symposium and providing an opportunity to engage with other student chapters and ASCE Region Leadership.

Sincerely,

Samantha Morgan

Co-Host, 2026 ASCE Upstate New York-Canada Student Symposium

Drake Saysomvang

Co-Host, 2026 ASCE Upstate New York-Canada Student Symposium

ASCE Student Symposium website

<https://studentsymposium.asce.org/upstate-newyork-canada/>

General symposium email address

asce@g.rit.edu

Instagram

@rit_asce

Mailer 3 Receipt Confirmation & Registration

STEP 1 - Mailer 3 Receipt Confirmation - *required*

Follow the link below to complete the Mailer 3 Receipt Confirmation due no later than **March 31st**, 2026.

Mailer 3 Receipt Confirmation Link – <https://forms.gle/1eQ2pXC9MoVvgPDH9>

REGISTRATION REMINDERS

STEP 2 – Student & Faculty Individual Registration Form - *required*

Student & Faculty Individual Registration Form is due before March 31st. *Since the original due date has passed, if the form was not filled out, you are not guaranteed food or merchandise during the symposium.*

Please visit our symposium website at <https://studentsymposium.asce.org/upstate-newyork-canada/> to register for the 2026 ASCE Upstate NY-Canada Student Symposium.

The Student & Faculty Individual Registration Form must be filled out by *ALL individuals* attending the symposium including chapter members, team competitors, guest teams, faculty advisors and staff. The Student & Faculty Individual Registration Form contains liability waiver information required by ASCE that must be reviewed and acknowledged by every individual attending, participating, and/or spectating at the symposium.

***Please note that judges and volunteers have a separate registration form that will be shared from the host university.*

STEP 3 – Student & Faculty Individual Registration Payment - *required*

Student & Faculty Individual Registration is \$175 per person. Registration form and payment are due by latest **March 31**.

Make check payable to:

Rochester Institute of Technology – American Society of Civil Engineers
Attn: Jared Rodriguez
Campus Center Bldg. 03 – Room 1610
Rochester, NY 14623-5608

OR PAY ONLINE HERE: [Link](#)

If your chapter will NOT be participating in the 2026 ASCE Upstate New York-Canada Student Symposium, please email asce@rit.edu

Safety-First Culture Information

ASCE and Rochester Institute of Technology are encouraging a Safety-First Culture during the student symposium. We encourage all symposium participants to embrace this concept by thinking about safety in their activities coming to, returning from, and while at our symposium. We want **every** symposium participant to return home safe and healthy.

To generate a Safety-First Culture, we have designated Mark Loria as our symposium safety officer. Further, be on the lookout for safety information at or in advance of the symposium, such as the location of first-aid supplies, who in the crowd has first-aid training and Safety Moments.

What is a Safety Moment? A Safety Moment consists of a quick discussion on an activity-specific, site-specific, or general safety topic. The Safety Moment may be presented by the leader of an activity, the symposium safety officer, or a member of the host symposium planning team. We ask that all participants give their undivided attention to the Safety Moment discussion and embrace the safety-first concept.

If an injury does occur during the symposium, it should be reported to the competition head judge, symposium safety officer, or activity leader immediately so that appropriate action can be taken based on the injury. If it is a true emergency, please call 911 first.

Contact information for the symposium safety officer and key host school representatives is listed below. Please keep this list close during the symposium and we encourage you to program the symposium safety officer's phone number into your cell phone.

Symposium Safety Officer & Host School Faculty Advisor

Name – Mark Loria

Email – mhlite@g.rit.edu

Symposium Student Contact

Name – Samantha Morgan

Email – sam3181@g.rit.edu

Number – 845-798-5322

Closest Hospital/Urgent Care

Strong Memorial Hospital

601 Elmwood Ave, Rochester, NY 14642

As a best practice, we strongly recommend that faculty advisors keep and maintain on-hand a list of emergency contact information for their university and participating students. ASCE and the student symposium host do not collect emergency contact information from registrants.

In the spirit of a Safety Moment, here are some safe driving habits to keep in mind as you travel to the student symposium:

- Driving at the speed limit has proven to save lives.
- Do not drive when tired. Swap drivers often.
- Minimum of two people awake at all times when wheels are rolling.
- Be aware of how larger/heavier vehicles behave when stopping or turning.
- Be aware of your surroundings when backing up any vehicle, especially trailers. Better yet, avoid backing up at all, if possible.
- Use a spotter to watch when you must back up a vehicle.
- Slow down when the conditions warrant (rain, snow, ice, fog, darkness, pedestrians nearby).
- Perform a circle of safety around your vehicle to identify what is in your blind spots.

Competition Safety Information

Please see the competition rules for full details. If there is a discrepancy between the rules and the information listed below, the competition rules are to be followed.

ASCE Concrete Canoe Competition: Safety gear (closed-toe water shoes, wet/dry suits, and Personal Floatation Device (life jacket)) for each paddler is the responsibility of each team. ([Exhibit 8: Race Regulations & Safety](#)) **Judges will require all canoe paddlers to wear wet or dry suits including appropriate footwear coverings (wetsuit booties or feet enclosed in a dry suit).**

AISC ASCE Student Steel Bridge Competition: Personal protective equipment is the responsibility of each team. During all construction activities, builders must wear hard hats and protective eyewear or safety goggles ([Section 10.1.6](#)). During all loading activities, competitors must wear hard hats, protective eyewear or safety goggles, work gloves, and steel toe or composite work boots that extend above the ankle. Steel or composite toe caps over leather work boots are acceptable. ([Section 11.2.1.3](#)). The hardhats must meet ANSI standard Z89.1, and the protective eyewear or safety goggles must meet ANSI standard Z87.1

Surveying Competition: Team members are responsible for providing their own required safety equipment including closed-toe shoes and safety-colored shirts or vests to participate in the field tasks. ([Section 6: Safety](#))

ASCE 3D Printing Competition: Teams are responsible for providing their own eye protection, work gloves, and closed-toe shoes, which must be worn by all active participants handling the bridge and during loading and testing. [Section 5.4.3: Safety](#)

Business Meeting (Eligibility Requirement)

The Business Meeting is scheduled to take place on **Saturday, April 11th, 2026, at 4:30 pm.**

The draft business meeting agenda is an attachment to the Mailer 3 email. If you have additional agenda items and/or motions that your student chapter would like to be included in the agenda, please submit them to asce@rit.edu by April 1st, 2025.

Note that the business meeting is officially the business meeting for the Student Conference Board of Delegates. The Board of Delegates consists of two student delegates (preferably a senior or junior in an ASCE leadership position and a sophomore in or aspiring to an ASCE leadership position) and the faculty advisor from each student chapter. Each student delegate must be a member in good standing with their student chapter and the Society. Each student chapter in the Student Conference has one vote.

At least one member of your ASCE student chapter must participate in the Business Meeting as part of the eligibility requirements to advance to finals for Concrete Canoe, Steel Bridge, Sustainable Solutions, and Surveying.

[Click here for ASCE Eligibility Requirements](#)

General RIT Campus Map

RIT | Rochester Institute of Technology Campus Map



Facility Name	Abbrev.	Facility Name	Abbrev.	Facility Name	Abbrev.	Facility Name	Abbrev.	Facility Name	Abbrev.	Facility Name	Abbrev.
100 Park Plaza Drive	PHD	Engineering Technology Hall	ENH	Genesee Wellness Hall	GWH	BLA	Science Family Studio	GSN	Properties not shown on map		
105 Tech Plaza Drive	PHO	Eugene Colby Hall A	CHN	Genesee Zeta Tau Alpha	GZA	LJH	Lawrence Johnson Hall	LJH	RIT Bio & Conference Center (BCC)		
170 Jefferson Road	JRF	Eugene Colby Hall B	CHB	Genesee Phi Epsilon	GPE	MST	Masonic Spirit Studios	MST	1237 St. Michaels Blvd		
Area V	SV	Eugene Colby Hall C	CHC	Genesee Alpha Sigma Alpha	GSA	MSH	Mark Shogren Hall	MSH	Rochester, NY 14627		
Area VI	SVI	Facilities Management	FM	Genesee Phi Kappa Phi	GPK	LOW	Max Lowenthal Hall	LOW	Admission / Decker Library Learning Building		
Area VII	SVII	Francis Baker Hall A	BHA	Genesee Phi Sigma Chi	GSC	MSH	Maxwell Hall	MSH	Student Hall for Exploration and Development		
Area VIII	SVIII	Francis Baker Hall B	BHB	Genesee Phi Kappa Phi	GPK	MSL	Maxwell Center Science Laboratory	MSL	Student Information Hall		
Area IX	SVIX	Frank E. Gleason Hall	GHA	Genesee Phi Kappa Phi	GPK	MSL	Maxwell Center Science Laboratory	MSL	Sustainability Institute Hall		
Reginal Center	RAC	Frank Miller Arena	MA	Genesee Phi Kappa Phi	GPK	MSL	Maxwell Center Science Laboratory	MSL	Thomas Gleason Hall		
South & Lomb Center	S&L	Frederick Douglass Sprague Perry Hall	SPH	Genesee Phi Kappa Phi	GPK	MSL	Maxwell Center Science Laboratory	MSL	Tiger Stadium		
Brown Hall	BH	Gene Postema Center	PC	Genesee Phi Kappa Phi	GPK	MSL	Maxwell Center Science Laboratory	MSL	University Commons Suites		
Campus Center	CC	George Eastman Hall	EAH	Genesee Phi Kappa Phi	GPK	MSL	Maxwell Center Science Laboratory	MSL	University Gallery		
Carlton Gleason Hall	CGH	George H. Clark Gymnasium	CLG	Genesee Phi Kappa Phi	GPK	MSL	Maxwell Center Science Laboratory	MSL	University Services Center		
Center for Research Education & Technology	CRET	Gleason Village Plaza	GV	Genesee Phi Kappa Phi	GPK	MSL	Maxwell Center Science Laboratory	MSL	University Student Center		
Center of Career Center for Emerging Science	CCES	Gleason Village Plaza C	GV-C	Genesee Phi Kappa Phi	GPK	MSL	Maxwell Center Science Laboratory	MSL	University Student Center		
Crossroads	CRS	Gleason Village Plaza D	GV-D	Genesee Phi Kappa Phi	GPK	MSL	Maxwell Center Science Laboratory	MSL	University Student Center		
CSO Student Development Center	CSO	Gleason Village Plaza E	GV-E	Genesee Phi Kappa Phi	GPK	MSL	Maxwell Center Science Laboratory	MSL	University Student Center		
Community Hall	CH	Gleason Village Plaza F	GV-F	Genesee Phi Kappa Phi	GPK	MSL	Maxwell Center Science Laboratory	MSL	University Student Center		
Engineering Hall	ENG	Gleason Village Plaza G	GV-G	Genesee Phi Kappa Phi	GPK	MSL	Maxwell Center Science Laboratory	MSL	University Student Center		
		Gleason Field House & Athletic Center	GFC	Genesee Phi Kappa Phi	GPK	MSL	Maxwell Center Science Laboratory	MSL	University Student Center		



For reference when traveling through RIT Campus. All main competition activities will be taking place on the south side of campus.

Shuttles

RIT Shuttles:

- RIT has a shuttle that runs from B-Lot to the Gleason Circle Loop (located next to the Gene Polisseni Center (POL)).
- This shuttle will be available for competitors and guests to travel from B-Lot to POL. **Please refer to the RIT Shuttle Schedule for bus arrival times.**
 - ◆ Gleason Circle is the first stop this bus route takes, so it should be a quick 5-minute ride to POL. However, using the RIT shuttle to return to B-Lot will take around 25 minutes due to it being the last stop.

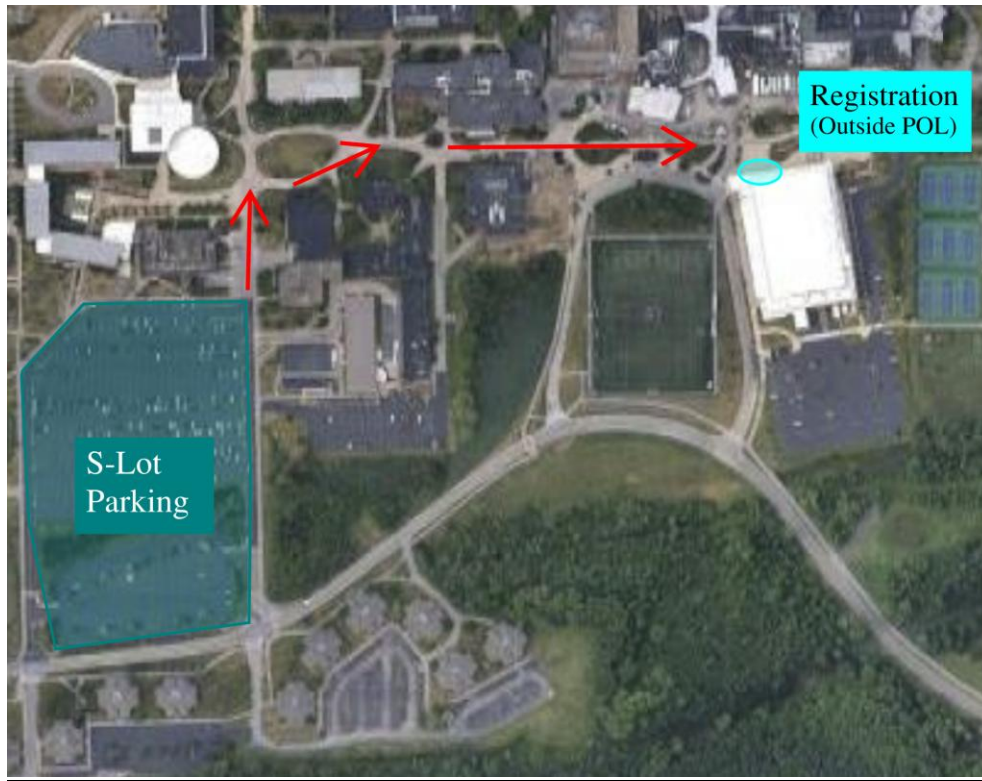
Host Provided Shuttle Service:

- Since the RIT shuttle service does not go from Gleason Circle back to B-Lot efficiently, RIT Symposium hosts have hired a shuttle service for Friday April 10th.
- This shuttle will run from 12:00pm-3:00pm to help competitors and guests get back to B-Lot from POL after the main competitions have concluded.
- Refer to the 'General Event Location Overview' map to locate the Gleason Circle bus loop.

Maps, Directions, and Parking Information

Thursday, April 9th

Registration



Registration Location Ground POV



B-Lot Parking to POL



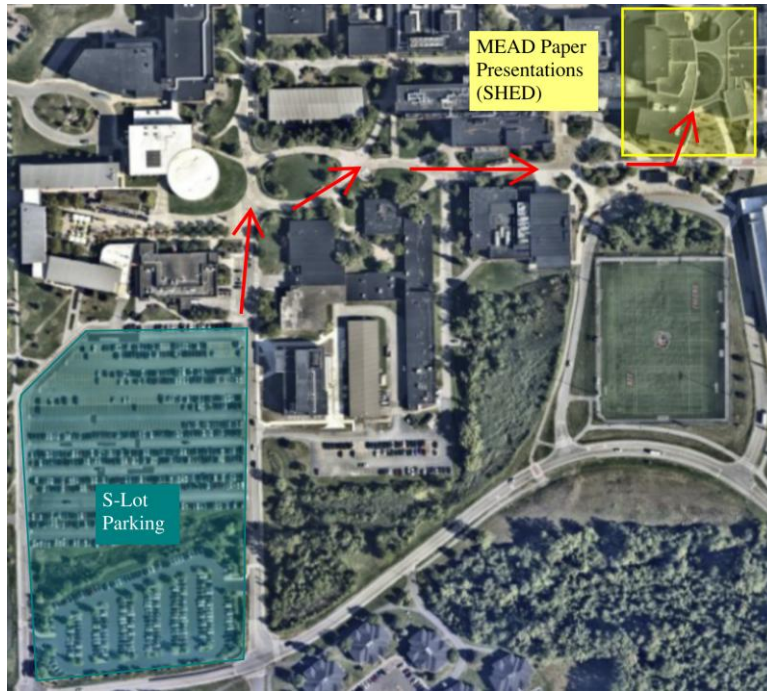
Registration: 5:00pm-7:00pm

- If you cannot make this registration time, please contact the symposium host.
- Located outside of the Gene Polisseni Center (POL).

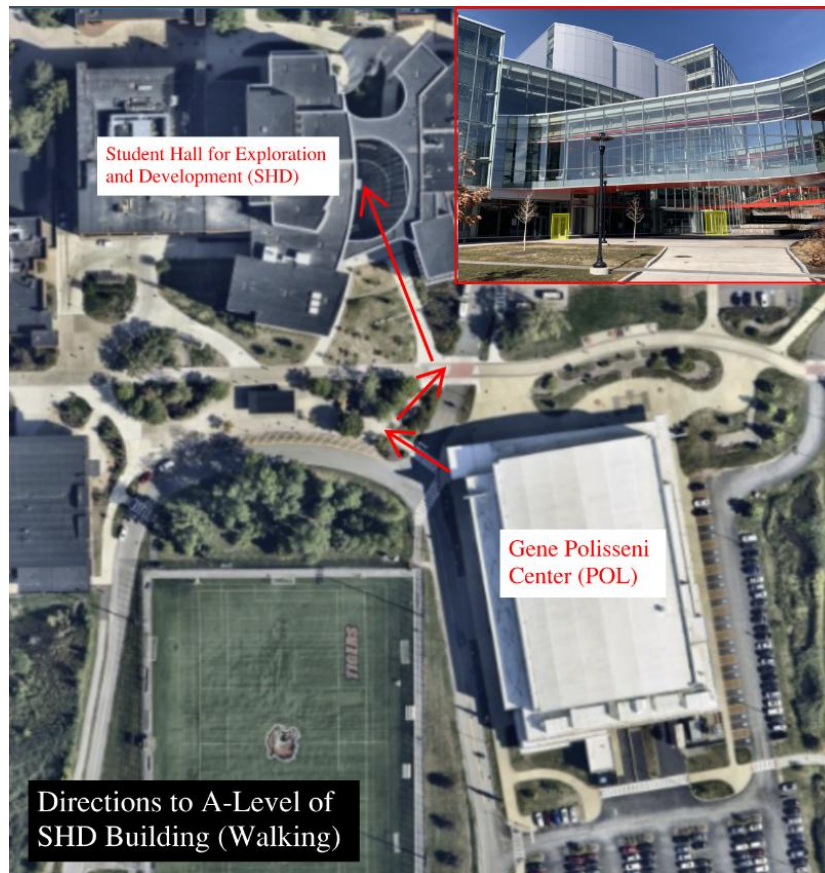
Important Parking Information:

- Registration occurs after 5pm, so all parking lots on campus will be available for use.
- Please park in S-Lot shown on the Registration map above, as it has the most space and is a short walk to the registration location.
 - ◆ If you arrive **EARLIER** than 5pm, please park in **B-Lot** and walk over (around 0.5 miles).

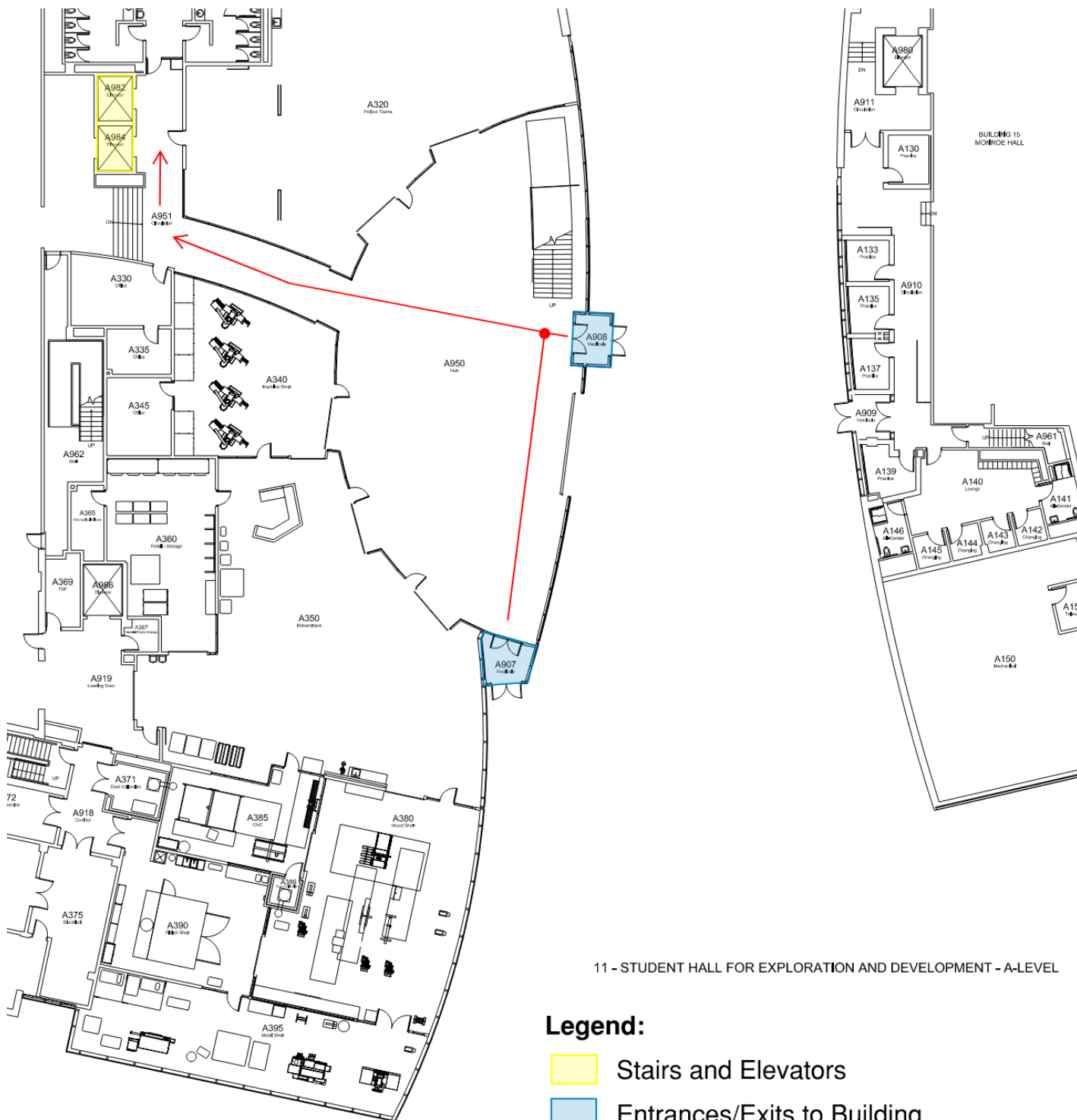
MEAD Paper Presentations



Walking Directions from POL to SHD



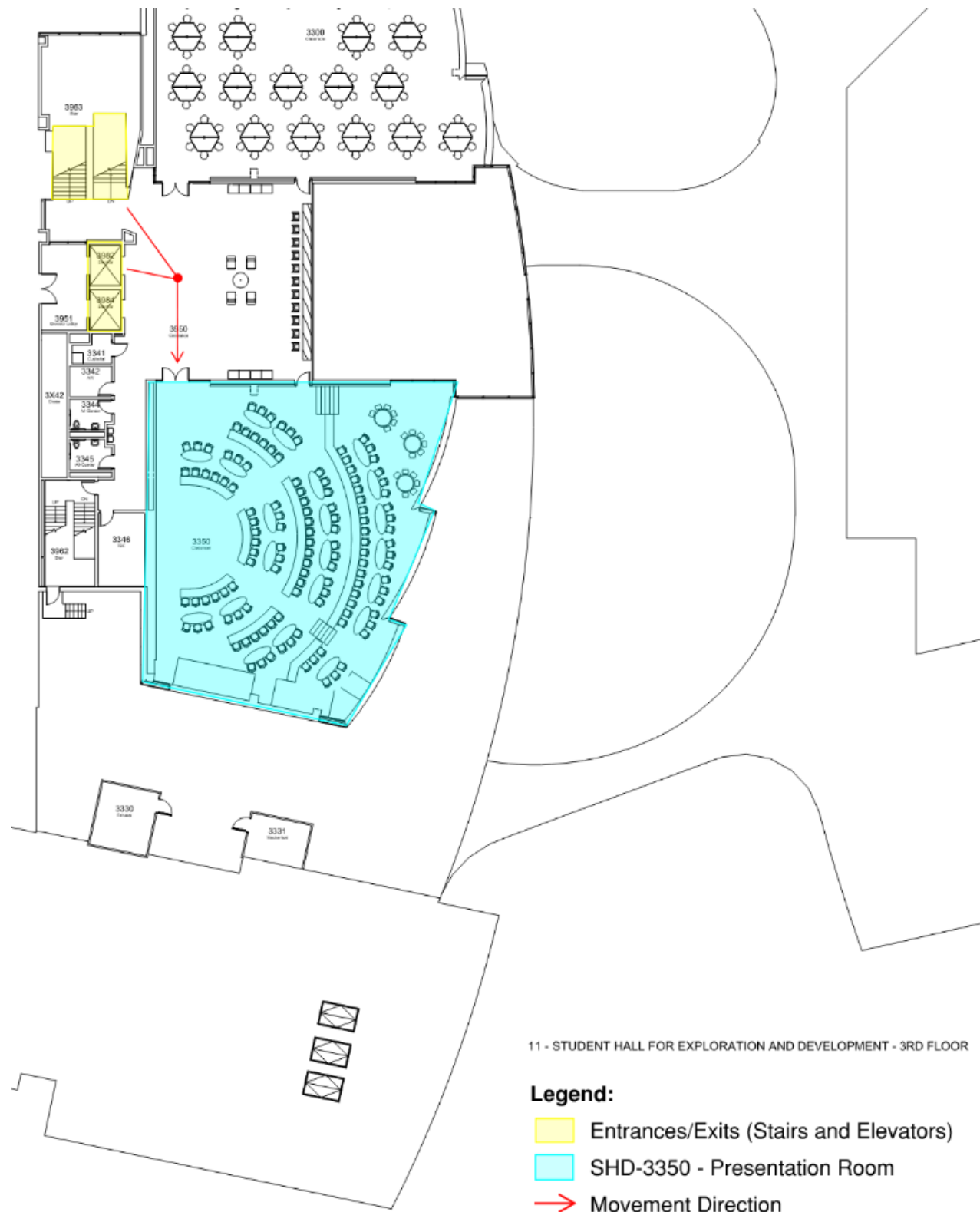
A-Level SHD



11 - STUDENT HALL FOR EXPLORATION AND DEVELOPMENT - A-LEVEL

- Legend:**
- Stairs and Elevators
 - Entrances/Exits to Building
 - Movement Direction

3rd Floor SHD



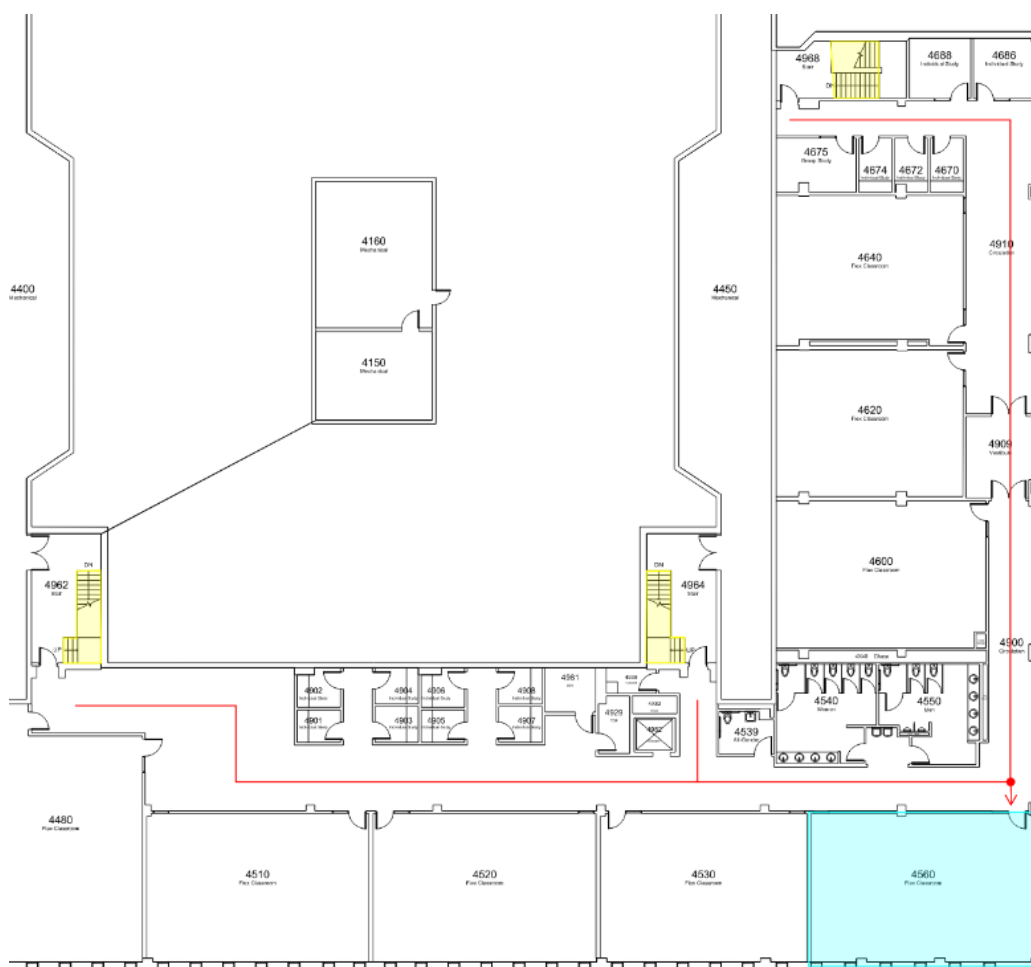
MEAD Paper Presentations: 5:30pm-8:30pm

- Bring a laptop and USB with presentation on file. Room has HDMI ports.
 - ◆ Presentations are on the 3rd floor of the Student Hall for Exploration and Development (SHD) building. Directions from A-Level to the elevators are shown in the maps above.

Important Parking Information:




- MEAD Paper Presentations occur after 5pm, so all parking lots on campus will be available for use.
- Please park in S-Lot shown on the ‘MEAD Paper Presentations’ map above, as it has the most space and is a short walk to the presentation location.
- If you arrive **EARLIER** than 5pm, please park in **B-Lot** and walk over (Refer to ‘B-Lot Parking to POL’ Map).

Surveying Presentations



05 - WALLACE LIBRARY - 4TH FLOOR 

Legend:

-  Entrances/Exits (Stairs and Elevators)
-  WAL-4560 - Presentation Room
-  Movement Direction

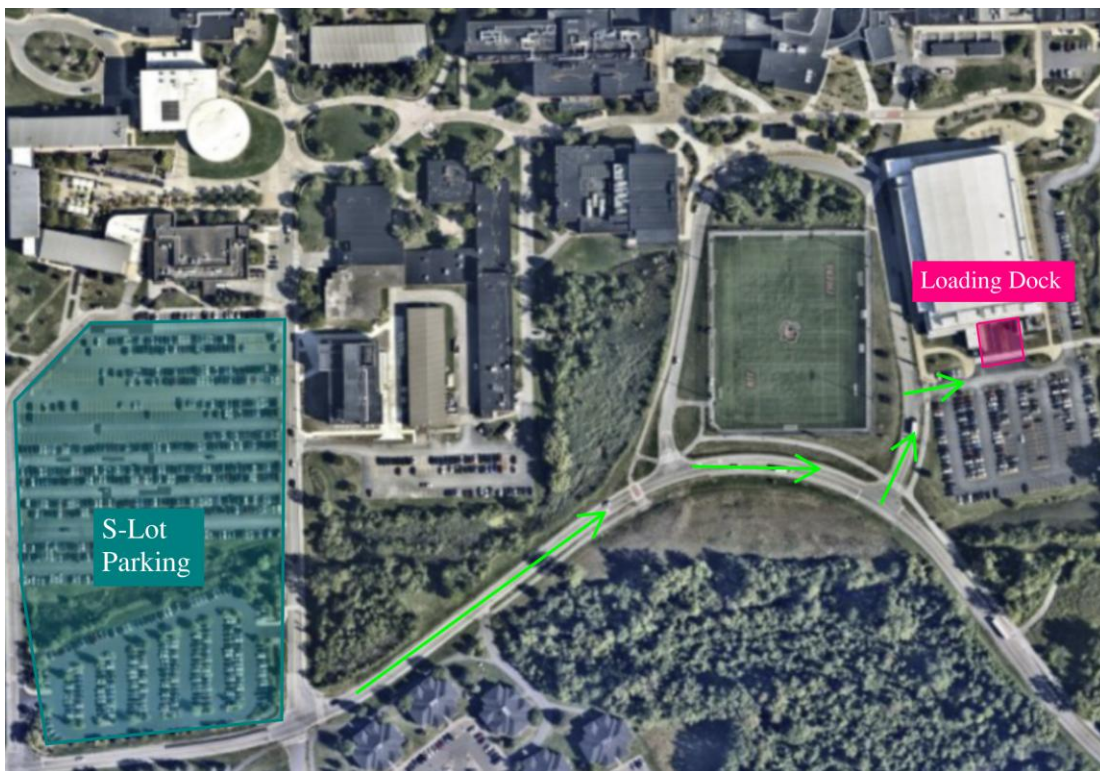
Surveying Presentations: 5:30pm-6:00pm

- Bring a laptop and USB with presentation on file. Room has HDMI ports.
- Presentations are on the 4th floor of the Wallace Library (WAL) building. The WAL Building is connected to the SHD building, or it can be reached from the outside.
- Refer to the 'Walking Directions from POL to SHD' and 'A-Level SHD' maps for directions to elevators. Elevators in the SHD also connect to WAL! Please select "4R" in the elevators to reach the correct floor.

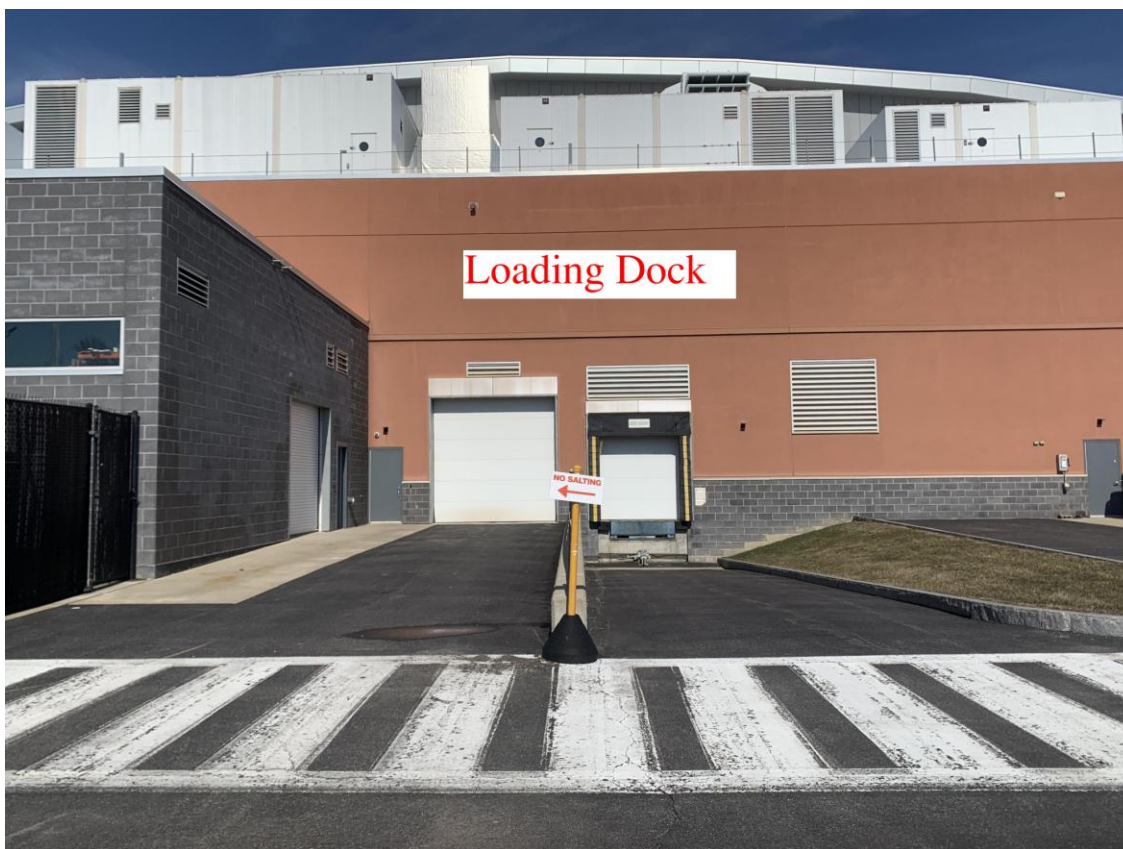
Important Parking Information:

- Surveying Presentations occur after 5pm, so all parking lots on campus will be available for use.
 - ◆ Please park in S-Lot shown on the 'MEAD Paper Presentations' map above, as it has the most space and is a short walk to the presentation location (around 0.4 miles).

Optional Unloading



Loading Dock Ground POV



Optional Unloading: 6:00pm-9:00pm

- Located at the POL Loading dock.
- Refer to unloading schedule to see when your unloading allocated time slot is.
- You will be told when to head to the Loading Dock to unload, please **DO NOT** go to the loading dock until directed by event volunteers to do so.
- Green arrows illustrate the driving route.

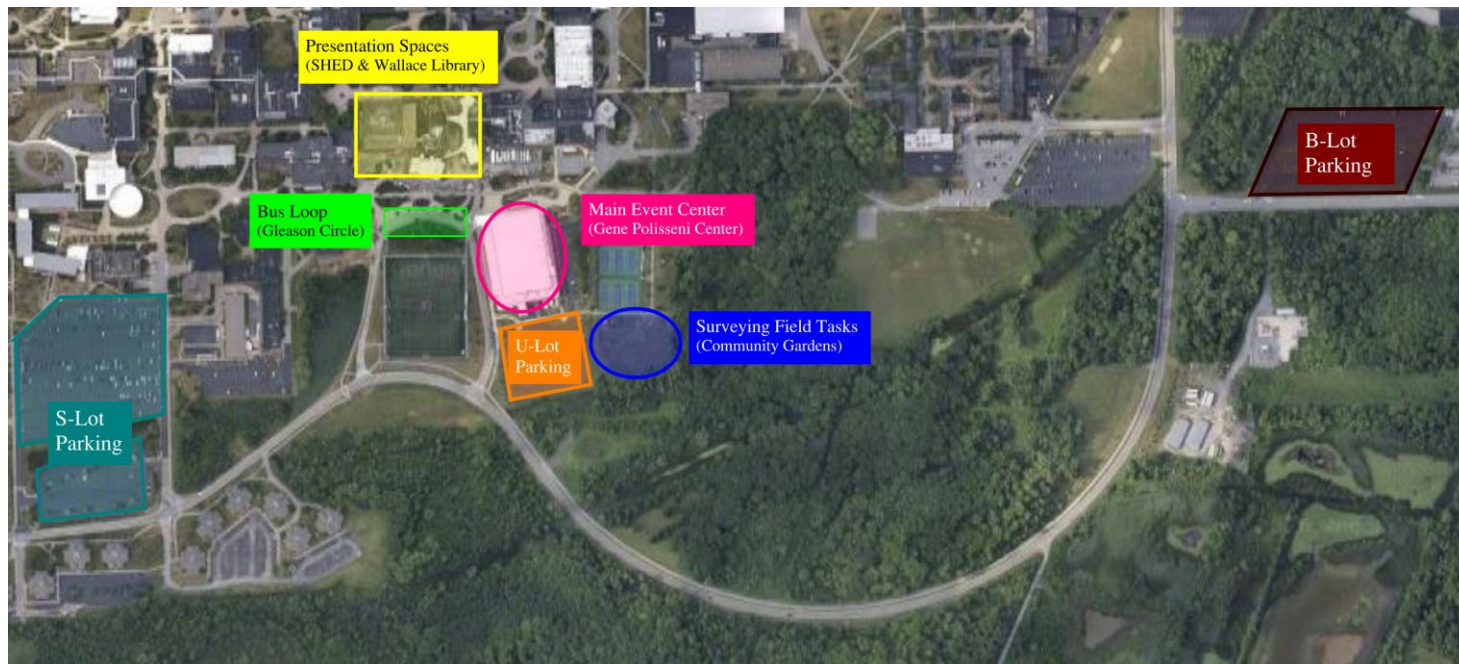
Important Parking Information:

- Unloading occur after 5pm, so all parking lots on campus will be available for use.
- Please park in S-Lot shown on the Optional Unloading map above, as it has the most space and should have enough room for trailers.
- Arrive in S-Lot at least 10 minutes before your schedule unloading time to ensure your team unloads on time.
- Host/volunteers will be sending trailers/your team's cars over to U-Lot Loading Dock during your unloading time. **Please do not move to U-Lot until you are directed to do so by host/volunteers.** This will help to avoid any congestion in the loading/unloading area.
- **IF THERE IS NOT ENOUGH ROOM FOR TRAILERS TO PARK** – please park in **B-Lot** and inform the host of your location.

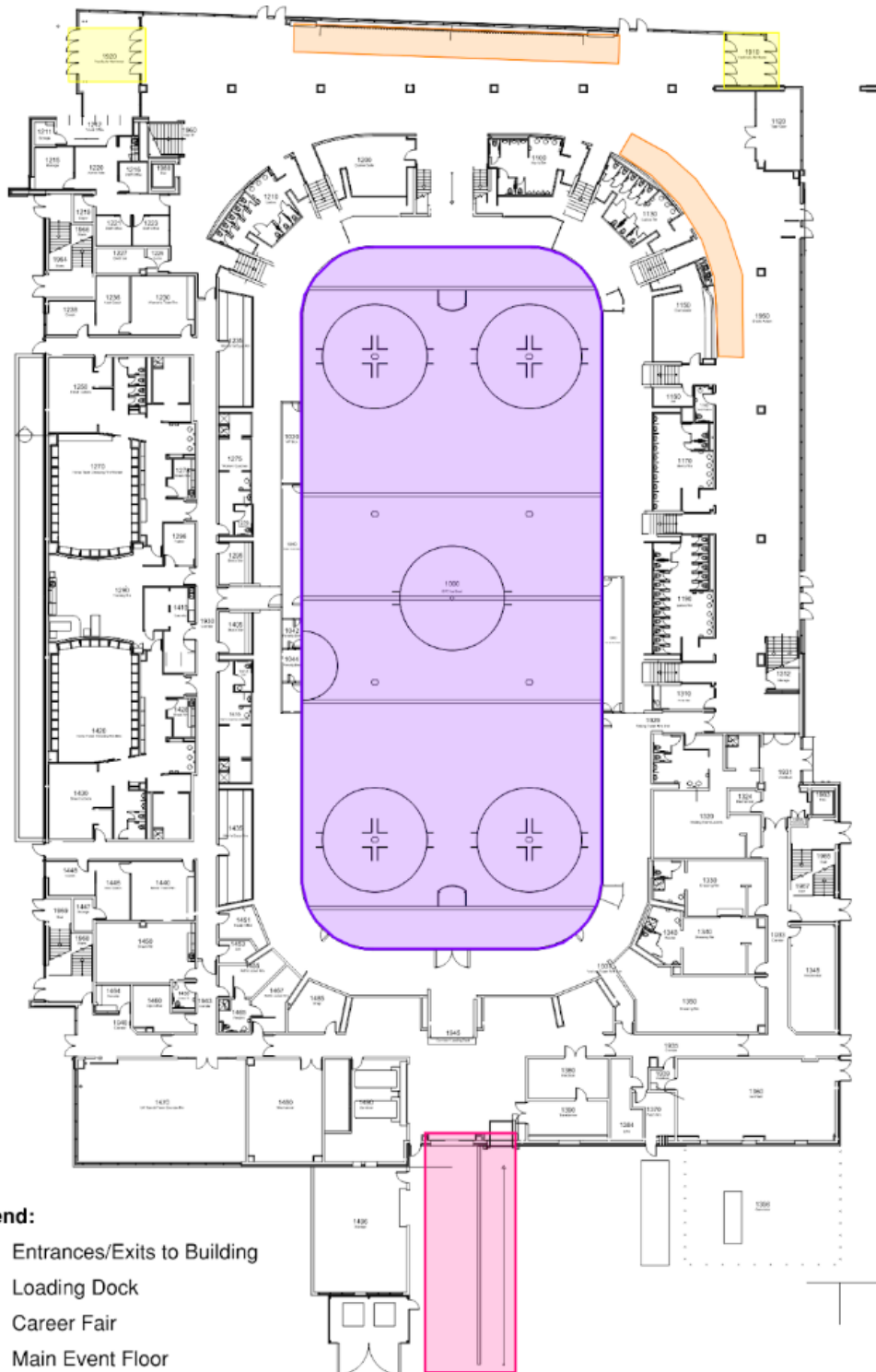
Maps, Directions, and Parking Information

Friday, April 10th

General Event Location Overview



POL – 1st Floor

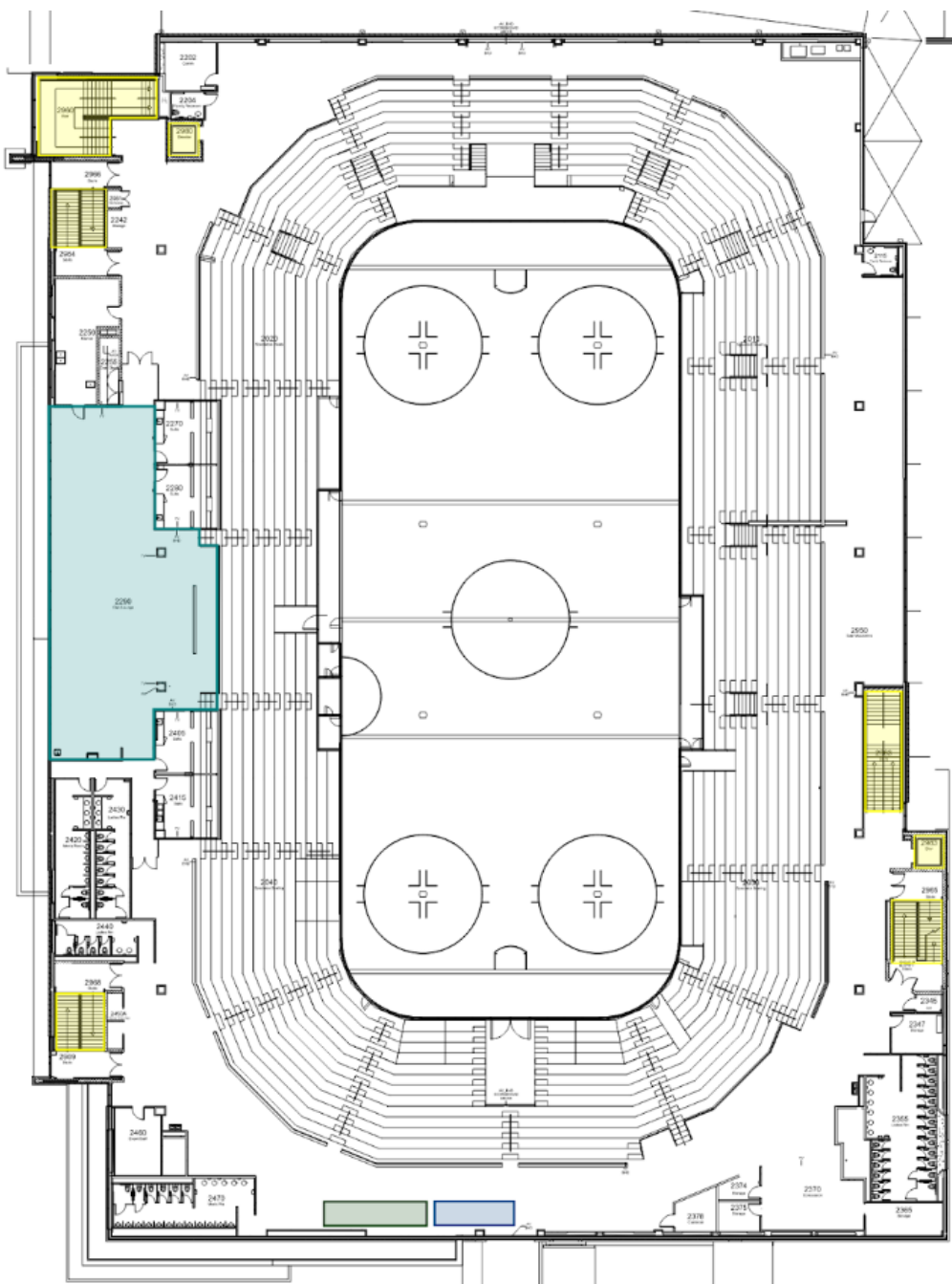


Legend:

- Entrances/Exits to Building
- Loading Dock
- Career Fair
- Main Event Floor

022 - Polisseni-1st Floor

POL – 2nd Floor



- Legend:**
- Elevators/Stairs to First Floor
 - Lunch Location (Club Lounge)
 - Sustainable Solutions Display
 - Surveying Map Display

022 – Polisseni–2nd Floor



Unloading



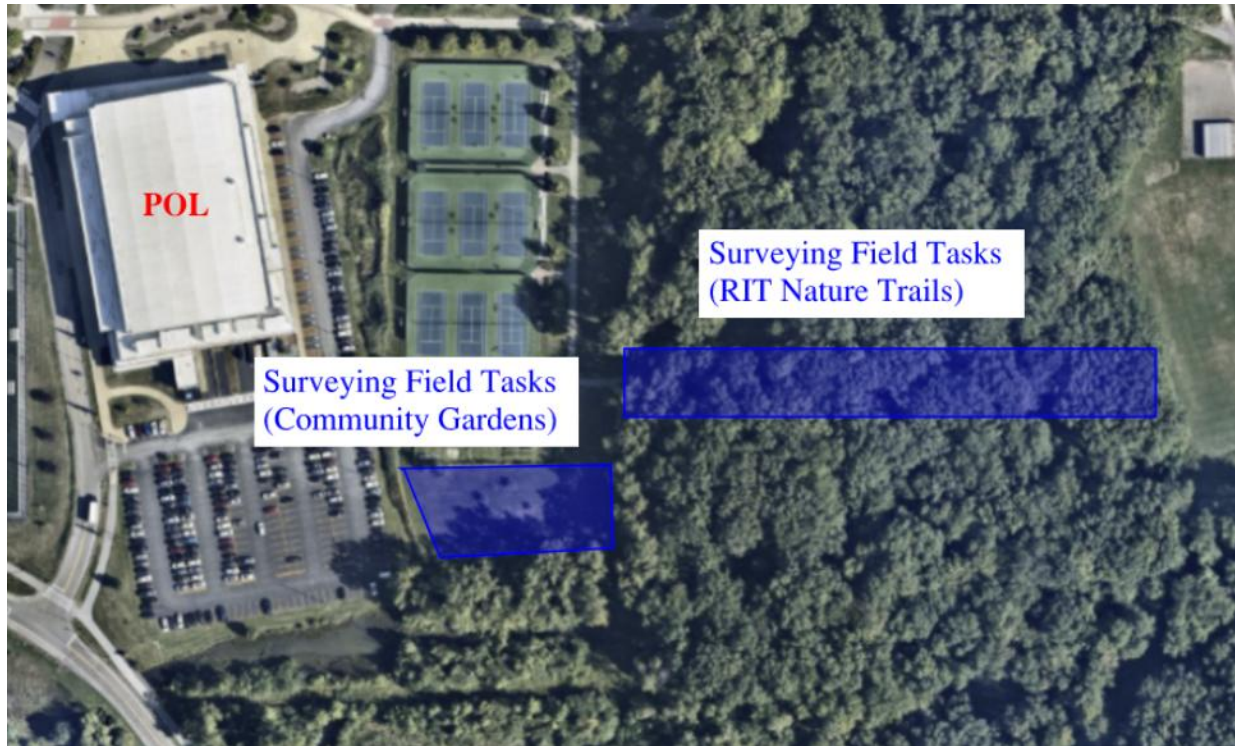
Unloading: 7:00am-8:20am

- Located at the POL Loading dock.
- Refer to unloading schedule to see when your unloading allocated time slot is.
- You will be told when to head to the Loading Dock to unload, please **DO NOT** go to the loading dock until directed by event volunteers to do so.
- Yellow arrows illustrate the driving route.

Important Parking Information:

- Unloading occurs **BEFORE** 5pm, so the only parking lot available for use will be **B-Lot**.
- Arrive in B-Lot at least 10 minutes before your schedule unloading time to ensure your team unloads on time.
- Host/volunteers will be sending trailers/your team's cars over to U-Lot Loading Dock during your unloading time. **Please do not move to U-Lot until you are directed to do so by host/volunteers.** This will help to avoid any congestion in the loading/unloading area.

UESI Surveying Competition



Captain's Meeting: 7:30am-8:00am

- Located in Gene Polissen Center (POL).

Plan Set Display: 8:00am-9:00am

- Refer to the 'POL-2nd floor' map to see where the Surveying Plan Set Display is located.

Surveying Field Tasks: 9:00am-4:00pm

- Refer to the above map for the location of the Surveying Field Tasks. Judges will have specific information on what to do in these spaces.

Important Parking Information:

- All Surveying Competition events occurs BEFORE 5pm, so the only parking lot available for use will be **B-Lot**.
- Refer to 'B-Lot Parking to POL' map for directions on how to walk to POL from the B-Lot Parking area.

Sustainable Solutions Competition

Captain's Meeting: 8:30am-9:30am

- Located in Gene Polissen Center (POL).

Poster Session: 9:30am-11:30am

- Refer to the 'POL-2nd floor' map to see where the Surveying Plan Set Display is located.

Interviews: 12:30pm-1:10pm

- Bring a laptop and USB with presentation on file. Room has HDMI ports.
- Presentations are on the 3rd floor of the Student Hall for Exploration and Development building. Refer to the 'Walking Directions from POL to SHD', 'A-Level SHD', and '3rd Floor SHD' maps for directions to the presentation room.

Important Parking Information:

- All Sustainable Solutions Competition events occurs BEFORE 5pm, so the only parking lot available for use will be **B-Lot**.
- Refer to 'B-Lot Parking to POL' map for directions on how to walk to POL from the B-Lot Parking area.

3D Printing Competition

Presentations: 8:30am-8:45am

- Bring a laptop and USB with presentation on file. Room has HDMI ports.
- Presentations are on the 3rd floor of the Student Hall for Exploration and Development building. Refer to the 'Walking Directions from POL to SHD', 'A-Level SHD', and '3rd Floor SHD' maps for directions to the presentation room.

Main Competition: 9:00am-9:30am

- Located on the main competition floor in POL. Refer to 'POL – 1st Floor' map.

Important Parking Information:

- All 3D Printing Competition events occurs BEFORE 5pm, so the only parking lot available for use will be **B-Lot**.
- Refer to 'B-Lot Parking to POL' map for directions on how to walk to POL from the B-Lot Parking area.

Steel Bridge Competition

Captain's Meeting: 8:30am-9:00am

- Located in Gene Polisseni Center (POL).

Aesthetics: 8:30am-9:30am

- Located on the main competition floor in POL. Refer to 'POL – 1st Floor' map.

Main Competition: 9:30am-3:30pm

- Located on the main competition floor in POL. Refer to 'POL – 1st Floor' map.

Important Parking Information:

- All 3D Printing Competition events occurs BEFORE 5pm, so the only parking lot available for use is **B-Lot**.
- Refer to 'B-Lot Parking to POL' map for directions on how to walk to POL from the B-Lot Parking area.

Concrete Canoe Competition

Captain's Meeting: 8:30am-9:00am

- Located in Gene Polisseni Center (POL).

Display: 9:30am-11:30am

- Located on the main competition floor in POL. Refer to 'POL – 1st Floor' map.

Presentations: 1:15pm-3:00pm

- Bring a laptop and USB with presentation on file. Room has HDMI ports.
- Presentations are on the 3rd floor of the Student Hall for Exploration and Development building. Refer to the 'Walking Directions from POL to SHD', 'A-Level SHD', and '3rd Floor SHD' maps for directions to the presentation room.

Maps, Directions, and Parking Information

Saturday, April 11th

Concrete Canoe Races



Concrete Canoe Races: 8:30am-2:15pm

- [Trailer Parking](#) will be in the smaller parking lot at the bottom of the hill.
- All other guests and competitors will be directed to the [Additional Parking](#) lot located at the top of the hill.
- Parking is first come first served, so please arrive early and on time to ensure a parking spot.
- **PARKING IS VERY LIMITED. PLEASE CARPOOL AS MUCH AS POSSIBLE TO THIS DESTINATION.**

Non-Competition Event Information

Registration: Thursday April 9th, 2026, from 5:00pm-7:00pm in front of Gene Polisseni Center (POL).

Career Fair: Friday April 10th, 2026, from 12:00pm-3:00pm. In the lobby of the Gene Polisseni Center. Come talk to Civil Engineering companies and network!

ASCE Information Table: Friday April 10th, 2026, at 12:00pm. Stop by the table to learn more about ASCE.

Banquet/Awards Ceremony: Saturday April 11th, 2026, at 6:30pm. Expected attire is business casual. Located at the Harro East Ballroom at 155 N Chestnut St, Rochester, NY 14604. **PARKING IS LIMITED. PLEASE CARPOOL AS MUCH AS POSSIBLE.**

Awards Banquet Parking Map



Google Maps Links for all Parking Lots:

- [Parking Lot 1](#)
- [Parking Lot 2](#)
- [Parking Lot 3](#)

Business Meeting: Friday April 10th, 2026, at 4:30pm. Located in the Student Hall for Exploration and Development Floor 3 Room 3350 (SHD-3350).

Competition Presentation & Display Information

All Competitions: Each student team that presents is required to bring a laptop to present their digital presentations. The host will provide projector equipment. It is recommended to also bring a copy of the presentation on a USB drive.

(NOTE: The presentation room has HDMI ports)

Please see the competition rules for full details. If there is a discrepancy between the rules and the information listed below, the competition rules are to be followed.

ASCE Concrete Canoe Competition: Teams are responsible for providing all necessary materials for the display portion of the competition. ([Section 7: Prototype Display Requirements](#)).

AISC ASCE Student Steel Bridge Competition: Teams are responsible for providing all necessary materials for the aesthetic display portion of the competition. ([Section 6.2.1](#))

Surveying Competition:

Topographic Map Display: It is the responsibility of each team to bring one (1) 24-inch by 36-inch paper copy set of the topographic mapping project to the symposium and give to the student symposium host at check-in, which will be used for public display at the student symposium ([Section 7.3, Paper Copy Submittals](#)). The sheets of the paper copy must match the electronic submission.

(This copy is for the public display and does not replace the required online submission due on **February 23, 2026, by 5:00 pm EST.**)

- Teams are encouraged to bring a standard 6ft tablecloth displaying your school's name, logo, or chapter name for the Topo Map Display Session (*not required*).
- Teams should plan to stay with their topo map public display to discuss their project with spectators.

Field Task Equipment: Please refer to [Appendix D, Equipment List, in the rules](#) for a full list of required items for the competition. All items must be supplied by each individual team at the symposium competition.

Sustainable Solutions:

Poster Session: Teams will be responsible for **providing their own easel for the poster presentation**. You can find standard 63" poster board easels online. Easel [Example](#).

- Teams will be expected to stay with their poster during the display to discuss their project with spectators.

ASCE 3D Printing Competition: Teams will be responsible for **providing their own easel** for the poster presentation. You can find standard 63" poster board easels online. Easel [Example](#).

Student Symposium Paper Competition: See above in red.

Social Network Information ~ Discord

Discord is the main form of communication between schools before, during and after the symposium. Our Discord can be accessed by following the link below or scanning the provided QR code.

<https://discord.com/invite/qU5FGxZeQF>



Final Student Symposium Schedule

Drug and Alcohol-Free Events

The use of drugs and alcohol is prohibited at all ASCE Student Symposium events.

Thursday, April 9th, 2026		
Event	Time	Location
Registration	5:00 PM - 7:00 PM	Outside POL
MEAD Paper Presentations	5:30 PM - 8:30 PM	SHD - 3350
Surveying Presentations	5:30 PM - 6:00 PM	WAL-4560
Optional Steel Bridge Unloading	6:00 PM - 9:00 PM	POL Loading Dock
Optional Concrete Canoe Unloading	6:00 PM - 9:00 PM	
Friday, April 10th, 2026		
Event	Time	Location
Steel Bridge Unloading	7:00 AM - 8:20 AM	Gene Polisseni Center (POL)
Concrete Canoe Unloading	7:00 AM - 8:20 AM	
Surveying Captain's Meeting	7:30 AM - 8:00 AM	
Surveying Plan Set Display	8:00 AM - 9:00 AM	
Sustainable Solutions Captain's Meeting	8:30 AM - 9:00 AM	
Concrete Canoe Captain's Meeting	8:30 AM - 9:00 AM	
Steel Bridge Captain's Meeting & Safety Brief	8:30 AM - 9:00 AM	
Steel Bridge Aesthetics	8:30 AM - 9:30 AM	
3D Printing Presentations	8:30 AM - 8:45 AM	SHD - 3350
3D Printing Competition	9:00 AM - 9:30 AM	Gene Polisseni Center (POL)
Surveying Field Tasks	9:00 AM - 4:00 PM	Outdoor - Community Gardens
Sustainable Solutions Poster Session	9:30 AM - 11:30 AM	Gene Polisseni Center (POL)
Steel Bridge Competition	9:30 AM - 3:30 PM	
Concrete Canoe Displays	9:30 AM - 11:30 AM	
Lunch	10:30 AM - 12:45 PM	
Guest Speaker - Recycled Concrete	11:45 AM - 12:20 PM	SHD - 3350
ASCE Career Fair	12:00 PM - 3:00 PM	POL Lobby
Sustainable Solutions Interviews	12:30 PM - 1:10 PM	SHD - 3350
Concrete Canoe Presentations	1:15 PM - 3:00 PM	SHD - 3350
Saturday, April 11th, 2026		
Event	Time	Location
Concrete Canoe Drop Off	8:30 AM - 10:00 AM	Irondequoit Bay Fishing & Game Club
Concrete Canoe Captain's Meeting & Safety Brief	9:30 AM - 10:00 AM	
Concrete Canoe Swamp Test	10:00 AM - 10:45 AM	
Lunch	11:00 AM - 1:15 PM	
Concrete Canoe Race Competition	11:00 AM - 2:15 PM	
Business Meeting	4:30 PM - 6:00 PM	SHD - 3350
Banquet and Awards Ceremony	6:30 PM - 8:30 PM	Harro East Ballroom

Key:	
	Concrete Canoe
	Steel Bridge
	Surveying
	3D Printing
	Sustainable Solutions
	Everyone
	Optional Event
POL	Gene Polisseni Center
SHD	Student Hall for Exploration and Development
WAL	Wallace Library

Final Presentation Schedules

Student Symposium Paper Presentations Date: Thursday April 9th - Location: SHD-3350	
<u>School</u>	<u>Timeslot</u>
Rochester Institute of Technology	5:30 PM
University at Buffalo	5:45 PM
Syracuse University	6:00 PM
SUNY Polytechnic Institute	6:15 PM
Cornell University	6:30 PM
Clarkson University	6:45 PM
BREAK	7:00 PM
Rensselaer Polytechnic Institute	7:15 PM
United States Military Academy	7:30 PM
SUNY Canton	7:45 PM
Union College	8:00 PM
University of Waterloo	8:15 PM
Western New England	8:30 PM

UESI Surveying Presentations Date: Thursday April 9th - Location: WAL-4560	
<u>School</u>	<u>Timeslot</u>
Western New England	5:30 PM

Final Presentation Schedules

3D Printing Presentations	
Date: Friday April 10th - Location: SHD-3350	
<u>School</u>	<u>Timeslot</u>
Rochester Institute of Technology	8:30 AM

Sustainable Solutions Interviews	
Date: Friday April 10th - Location: SHD-3350	
<u>School</u>	<u>Timeslot</u>
Syracuse University	12:30 PM
Rochester Institute of Technology	12:50 PM

Concrete Canoe Presentations	
Date: Friday April 10th - Location: SHD-3350	
<u>School</u>	<u>Timeslot</u>
Cornell University	1:15 PM
University at Buffalo	1:30 PM
Rochester Institute of Technology	1:45 PM
BREAK	2:00 PM
Clarkson University	2:15 PM
Rensselaer Polytechnic Institute	2:30 PM
United States Military Academy	2:45 PM

NOTE: Presentation schedules are **final**, and it is the responsibility of each team to manage any conflicts.

Unloading Schedules

We are offering unloading on Thursday, April 9th, as well as Friday, April 10th. An email was sent to all teams regarding this unloading option, and the order of unloading times correlates to the order of the responses received from that email. Please refer to the instruction in the **maps, directions, parking section** on where to park for your designated unloading day. **Please DO NOT come to the POL Loading Dock unless told to by an event volunteer/personnel.** This will help avoid congestion and confusion during unloading.

Arrive in the designated parking lot at least 10 minutes before your schedule unloading time to ensure your team unloads on time.

Unloading Schedule	
Date: Thursday April 9 th - Location: POL Loading Dock	
<u>School</u>	<u>Timeslot</u>
Rensselaer Polytechnic Institute	6:00 PM
United States Military Academy	6:20 PM
University at Buffalo	6:40 PM
Syracuse University	7:00 PM
SUNY Polytechnic Institute	7:20 PM
Cornell University	7:40 PM
Clarkson University	8:00 PM
Rochester Institute of Technology	8:20 PM
Date: Friday April 10 th - Location: POL Loading Dock	
<u>School</u>	<u>Timeslot</u>
Union College	7:00 AM
University of Waterloo	7:20 AM
SUNY Canton	7:40 AM

Final Deadlines

We highly recommend that you share this information with your chapter, including any competition captains.

March 1	Student Symposium Paper Competition submission due to asce@rit.edu Late submissions will face penalty.
March 17	Mailer 3 (final) sent to each student chapter.
March 17	Sustainable Solutions Competition Technical Design Proposal, Envision Checklist and Criteria Justification, Public Outreach Poster, and Sketchup files are due. <i>(Unique and secure link to be provided to each team from ASCE)</i>
March 31	Mailer III Receipt Confirmation due from each student chapter. LATEST date to pay for and fill out individual registration form.
April 9	Steel Bridge Competition Cost Estimation Forms are due before the start of the event. Form will be sent out alongside Mailer 3.
April 9-11	2026 ASCE Upstate New York-Canada Student Symposium

Society Competition Information

SOCIETY COMPETITIONS AT THE 2026 ASCE UPSTATE NEW YORK-CANADA STUDENT SYMPOSIUM

Society-wide Competitions

ASCE Sustainable Solutions Competition



ASCE UESI Surveying Competition



AISC/ASCE Student Steel Bridge Competition

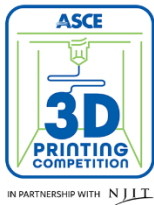


ASCE Concrete Canoe Competition



Society Pilot Competitions

ASCE 3D Printing Competition



Society competition rules can be found at:

<https://www.asce.org/communities/student-members/conferences/rules>

Student Symposium Paper Competition

The ASCE Student Symposium Paper Competition emphasizes the importance of being able to write and present a paper as essential communication skills for all engineers and often necessary for advancement in your career. The competition consists of a paper submission and a presentation at the student symposium.

The topic for the **2026 ASCE Upstate New York-Canada Student Symposium** Paper Competition: Daniel W. Mead Prize for Students Topic – [click here for topic.](#)

- **Submission deadline: March 1, 2026**
 - *Papers submitted after the March 1st deadline will be accepted and permitted to present at the student symposium. Late submissions may be subject to a deduction and will not be eligible for consideration for the National Daniel W. Mead Prize for Student Competition, regardless of final placement at the student symposium. Late submissions may be subject to a deduction.*
- **Submission email/link is: asce@rit.edu**
- **Rubric: [Click here for the 2026 Student Symposium Paper Competition Rubric](#)**
- **Time Limit for Presentations: 5-minute presentation, 5-minute Q&A**

****All papers must have a statement at the bottom attesting that, except where otherwise cited, the submission is the work of the student author and not AI or NLP. Submissions without this statement will not be considered for recognition.**

For student chapters participating in their regional student symposium, papers must be submitted to the student symposium host by March 1, 2026, using the host's preferred submission process as outlined above. A separate submission to ASCE is not required for the Daniel W. Mead Prize for Students Competition, as the student symposium submission will serve as the official entry for both the Student Symposium Paper Competition and the Mead Paper Competition. The winning paper from each student symposium will advance to the Society competition for final review, with the official national winner announced in May 2026.

*****SOCIETY-WIDE FINALS ELIGIBILITY REQUIREMENT*****

Both the Student Symposium Paper Competition submission and the presentation are mandatory for any ASCE Student Chapter participating in the **2026 ASCE Upstate New York-Canada Student Symposium** that wishes to be eligible to advance to ASCE Society-wide finals competitions and the SSBC National Finals. Competitions **requiring** participation include:

- ASCE Concrete Canoe Competition
- ASCE Sustainable Solutions Competition
- ASCE UESI Surveying Competition, and
- AISC/ASCE Student Steel Bridge Competition.

Note: Any papers/presentations created for any other competition do not count as an entry into the Student Symposium Paper Competition.

ASCE Society Competition Eligibility Requirements

Competitions that advance to an ASCE Society-wide Finals Competition include the ASCE Concrete Canoe Competition, ASCE Sustainable Solutions Competition, and ASCE UESI Surveying Competition. The AISC/ASCE Student Steel Bridge Competition advances to the SSBC National Finals and follows the eligibility requirements below. See [SSBC Rules](#) for more information.

The purpose of student competitions is to provide student members career-enrichment opportunities to gain hands-on, practical experience and leadership skills. Society Competitions are an important and special opportunity to showcase the engineering and professional skills of student teams. As such, mutual respect is required for all stakeholders, including competitors, judges, hosts, and guests. Invitations to the Student Symposia and the Society-wide finals competitions/ASCE Civil Engineering Student Championships are a privilege, not a right. Failure to act professionally can result in sanctions, disqualifications, and loss of invitations. Please note that the requirements for eligibility for Society-wide finals competitions are more stringent than the requirements for participation at the student symposia competitions.

ELIGIBILITY FOR STUDENT SYMPOSIUM COMPETITION

The following qualifications are required of all ASCE Student Chapters to compete at the Student Symposia Competitions:

An ASCE Student Chapter must:

1. Be in good standing with ASCE:
 - a. Have paid their annual dues, as received by ASCE, **no later than the start of their Student Symposium.**
 - b. Have submitted their student chapter's full Annual Report or EZ Annual Reporting Form **no later than February 1, 11:59 p.m. EST.**

ELIGIBILITY FOR ASCE SOCIETY-WIDE FINALS COMPETITION

The following qualifications are required of all ASCE Student Chapters in order to advance to the ASCE Society-wide Finals Competition:

An ASCE Student Chapter must:

1. Be in good standing with ASCE:
 - a. Have paid their annual dues, as received by ASCE, no later than February 1, 11:59 p.m. EST.
 - b. Have submitted their student chapter's **full Annual Report, no later than February 1, 11:59 p.m. EST, and have received a minimum score of 25 points out of a possible 100. Student Chapters that submit an EZ annual reporting form do not qualify** to advance to finals competition; and
2. Attend and participate in their assigned Student Symposium as shown through their school's:
 - a. On-time attendance and active participation by a member of the ASCE Student Chapter at the Student Symposium Business Meeting.
 - b. Participation in the Student Symposium Paper Competition, including submission and presentation by a member of the ASCE Student Chapter. Note that any papers/presentations created for any other competition do not count as an entry into the Student Symposium Paper Competition.

Questions regarding eligibility should be directed to student@asce.org.

Thank you to our sponsors!



MRB
Group

ERDMAN
ANTHONY



Engineering
& Design



ASCE
ROCHESTER SECTION

ASCE
REGION 1

Pike

LISK
Activating the World

LeCHASE



menARD



RAMSEY
CONSTRUCTORS, INC.

ARCADIS

Local Hotels & Restaurant Information

Suggested Hotels near Rochester Institute of Technology include:

- [RIT Inn & Conference Center](#) (9 minutes away)
- [Courtyard by Marriott Brighton](#) (10 minutes away)
- [Holiday Inn & Suites Marketplace](#) (11 minutes away)
- [Holiday Inn Express University Area](#) (11 minutes away)
- [DoubleTree](#) (12 minutes away)
- [Best Western Marketplace Inn](#) (12 minutes away)

Suggested Restaurants near Rochester Institute of Technology include:

- [Jay's Diner](#) (8 minutes away)
- [As Evi Bakery And Restaurant](#) (8 minutes away)
- [Sunny's Family Diner](#) (10 minutes away)
- [Peppermints](#) (10 minutes away)
- [Steve's Diner](#) (14 minutes away)
- [Tully's](#) (15 minutes away)

***** Please note that it is the responsibility of each attendee/chapter to reserve and pay for their own accommodations. *****